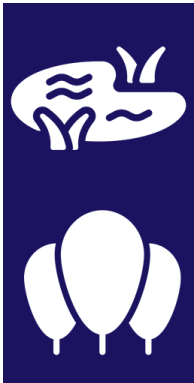




VERMONTVIEW 2019 - 2020



VERMONTVIEW 2020 - 2021 ACTIVITIES



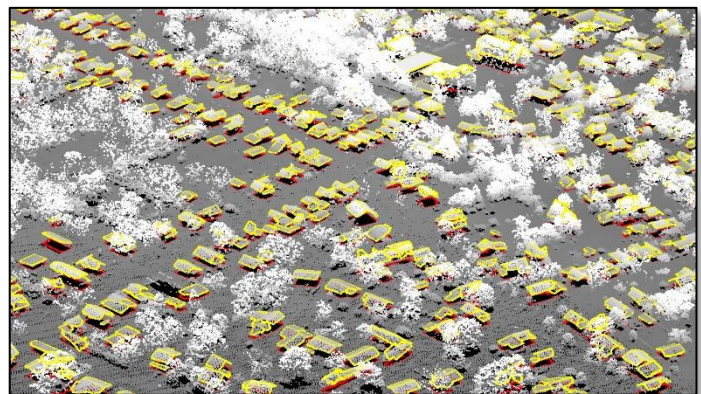
Climate change, development pressure, and invasive species are having an affect on Vermont. VermontView leverages remote sensing technology to quantify changes to Vermont's landscape, which helps to inform resource management decisions. Vermont's high-resolution land cover dataset maps features that are thousands of times more detailed than existing products, with features as small as driveways captured and quantified.



Vermont's fall foliage is a major driver in attracting tourists to the state. VermontView tracks foliage using remote sensing.



VermontView is leveraging cutting-edge technology and big data analytics to keep Vermont's high-resolution land cover dataset up to date. By leveraging Landsat image products from the USGS and machine learning approaches, VermontView can identify areas where change has occurred and then update the land cover mapping accordingly. This ensures that the maps are not just accurate and detailed, but current.



Vermont's high-resolution land cover dataset includes 3D building footprints that are improve 911 response.



VermontView is supporting Vermont's efforts to grow and retain a high-tech workforce. With geospatial technology slated to be one of the top 10 growth fields in the coming decades, K-16 outreach activities are crucial in getting Vermont's youth engaged and excited about potential educational and career opportunities. VermontView engages in meaningful activities such as 4H Teen Science Cafes and the Governor's Institute.



Although VermontView's outreach and education efforts moved to a virtual format this past year, dozens of students attended.

VermontView is a member of the AmericaView Consortium, a nationally coordinated network of academic, agency, non-profit, and industry partners and cooperators that share the vision of promoting and supporting the use of remote sensing data and technology within each state. AmericaView is funded by USGS grant agreement G18AP00077.



AmericaView Website:
www.AmericaView.org
Christopher McGinty, Executive Director:
chris.mcginty@americaview.org
Lisa Wirth, Program Manager:
lisa.wirth@americaview.org
Brent Yantis, Board Chair:
rodney.yantis@louisiana.edu

BENEFITS TO VERMONT



Expertise

With no remote sensing professionals employed within state government, VermontView is the resource agencies and elected officials turn to when they need unbiased advice.



Analytical Capacity

VermontView leverages the massive computing infrastructure at the University of Vermont to apply big data analytics to extract actionable information from vast remote sensing datasets.



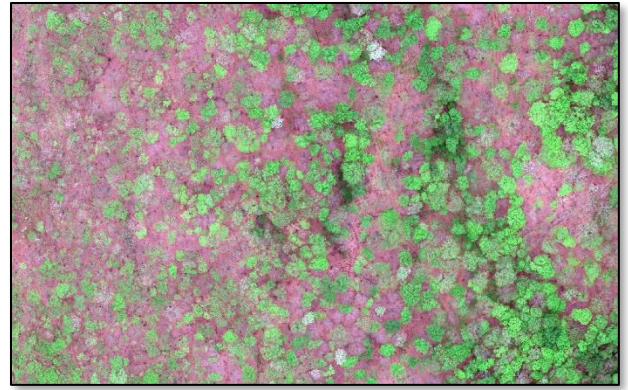
The Future Workforce

Developing the workforce of the future starts today. VermontView is active throughout the state in K-16 outreach and education, providing students with STEM learning opportunities.

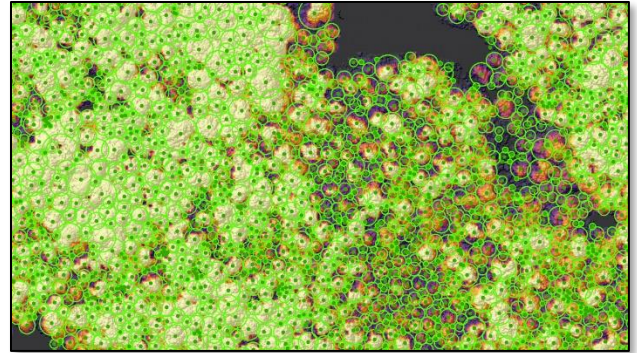


Collaboration

With resources strained we know collaboration is more important now more than ever. VermontView brings people together to solve



VermontView used remotely sensed data to track the impact of this past summer's gypsy moth infestation on forest lands.



3D maps generated from LiDAR are providing new insights into Vermont's forest resources, such as tree counts, which are helping to speed up forest inventories.

VERMONTVIEW CONSORTIUM MEMBERSHIP



The
UNIVERSITY
of VERMONT



VermontView Principal Investigator:

Jarlath O'Neil-Dunne
University of Vermont
802.656.3324
joneildu@uvm.edu



<http://www.uvm.edu/rsenr/sal/vermontview>



@jarlathond



<http://letters-sal.blogspot.com/>