



UTAHVIEW 2018 - 2019



UTAHVIEW HISTORY AND SUCCESSES

UtahView is hosted by the Remote Sensing/GIS Laboratory at Utah State University in Logan, Utah. The primary mission of UtahView is to promote the availability, distribution, and use of geospatial technology and data in the public and private sectors; to encourage the use of geospatial data in higher education and among K-12 schools; and to facilitate geospatial research and understanding at all levels.

UtahView promotes and fosters geospatial knowledge and skills through outreach events, such as educational trainings, workshops, and presentations. UtahView partners with Utah educators, university and county extension agents, state and county employees, and the general public to coordinate events and activities. During these outreach events, UtahView presents information on geospatial technologies, remote sensing, global positioning systems, and unmanned aerial systems and engages participants and attendees through demonstrations and exercises.

In recent years, UtahView has interacted with land manager and agencies to demonstrate the use and value of geospatial technologies in sustainable land and natural resource management. For instance, demonstrations and workshops have been held during the Beaver River Watershed Tour and Training in Beaver County, Utah, and at Deseret Land and Livestock in Rich County, Utah.

UtahView has made a significant effort to have a strong presence in local high schools. UtahView coordinates with the Utah Geographic Information Council (UGIC) Education Committee to host GIS Day and Earth Observation Day workshops and activities during the annual spring conference. In the past, UtahView has worked with Escalante High School, Morgan High School, and Uinta High School. UtahView also works with undergraduate students, middle school students, young children, and senior citizen groups around the state.

In addition to hosting educational events and activities, UtahView attends the Maps on the Hill event, hosted by UGIC during the Utah legislative session, to effectively communicate the importance of using geospatial data and tools in addressing local issues to legislators and students.

UtahView also supports and engages in research activities. Through the AmericaView Mini-grant Program, UtahView developed a Landsat Analysis Ready Data (ARD) tutorial for college-level students that provides detailed instructions on how to process and analyze the data. UtahView also developed a methodology for evaluating historic landscape conditions in dryland river systems. By using a series of historic aerial photographs, historic land cover and river morphology were assessed to support restoration planning for the Price River in central Utah.



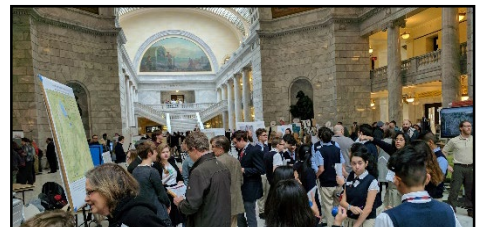
Remote Sensing/GIS Laboratory at Utah State University in Logan, Utah



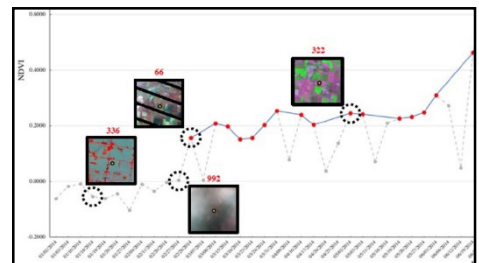
UAS demonstration at Deseret Land and Livestock



Presentation to Native American STEM Mentorship Program students



2017 Maps on the Hill Event



Landsat ARD Analysis Interface

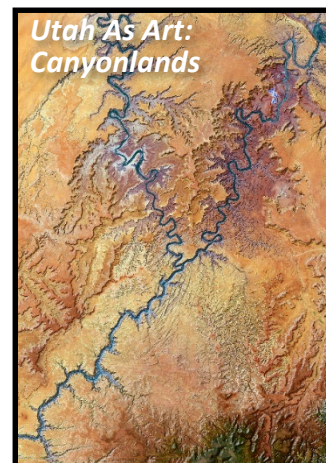
UtahView is a member of the AmericaView Consortium, a nationally coordinated network of academic, agency, non-profit, and industry partners and cooperators that share the vision of promoting and supporting the use of remote sensing data and technology within each state. AmericaView is funded by USGS grant agreement G18AP00077.



AmericaView Website:
www.AmericaView.org
Christopher McGinty, Executive Director:
chris.mcginty@americaview.org
Lisa Wirth, Program Manager:
lisa.wirth@americaview.org
Brent Yantis, Board Chair:
rodnev.yantis@louisiana.edu

UTAHVIEW 2018 - 2019 ACTIVITIES

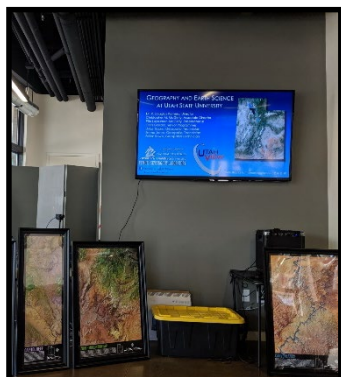
UtahView is continuing to develop and program a Landsat ARD analysis interface using Jupyter Notebook, Python, and R statistical analysis tools. The interface will allow users to extract spectral data from the Landsat ARD temporal series and present that information in the form of temporal trend lines. During the past year, UtahView has spent a significant amount of time developing the *Utah As Art* exhibit. The *Utah As Art* map series is a localized version of the USGS *Earth As Art* program. The goal of this exhibit is to display the diverse beauty of the state of Utah, to visualize the geography and natural resources in the state, and to demonstrate one of the many values of satellite imagery. The series presently consists of five maps, but the collection will at least double within the next few months. The collection has been presented at the 2019 UGIC Conference in Midway, Utah, and at various educational and outreach events. The exhibit is tentatively scheduled for a one-month long display at the Snow Horse Art Gallery at the Davis County Conference Center in January 2020. In addition to developing the map series, a companion tutorial has been developed for high school students who would like to make a map of their own (<http://bit.ly/UtahAsArtTutorial>).



In terms of education and outreach events, UtahView partnered with the UGIC Education Committee during the 2019 UGIC Conference to host a GIS/Earth Observation Day event on May 7, 2019 for students at Wasatch High School. Over 65 students participated in the event to learn about remote sensing, GPS, GIS, UAS, and ArcGIS Online. On June 26, 2019, UtahView presented to a group of over 40 senior citizens from the Logan Summer Citizen Program to demonstrate the use and value of remote sensing and UAS in natural resource management and science. On August 28, 2019, AmericaView, UtahView, and the RS/GIS Laboratory set up informational tables at the Quinney College of Natural Resources (Utah State University) Opening Social. Just prior to the event, several legislative staffers met with Christopher McGinty (AmericaView Executive Director), Dr. R. Douglas Ramsey (UtahView Principal Investigator), and Ellie Leydsman McGinty (UtahView State Coordinator) to learn about science-based programs and activities at Utah State University.



GIS Day at Wasatch High School



Summer Citizen Presentation



Summer Citizen Presentation



QCNR Opening Social

UtahView Principal Investigator:

Dr. R. Douglas Ramsey

Utah State University

(435) 797-3783

doug.ramsey@usu.edu



<https://utahview.org>



[Facebook.com/UtahView](https://www.facebook.com/UtahView)



@UTView



@utahview