



PENNSYLVANIAVIEW 2018 - 2019



PENNSYLVANIAVIEW HISTORY AND SUCCESSES

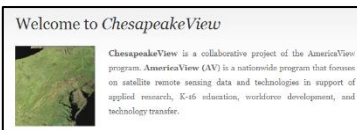
PAView is a collaborative effort of a consortium of members throughout the Commonwealth of Pennsylvania. PAView was established in September of 2005 and is a full member of the AmericaView program. The current members who have a wide range of research and outreach interests include: California University of Pennsylvania, Bucknell University, Clarion University, Villanova University, the Pennsylvania State University, and Pennsylvania Spatial Data Access--the public access GIS clearinghouse for the Commonwealth of Pennsylvania. PAView was developed to further one of the primary goals of the AmericaView program-- educating the public about remotely sensed imagery and to provide an additional portal to data and information in a public forum.



To insert your own image, right-click on the image above and choose "change picture".

The goals of PAView are: 1) To build partnerships within the Commonwealth to support interests in public domain remotely sensed data. 2) To create resources for K-12 teachers to utilize in their classrooms to educate students about satellite imagery. 3) To promote the sharing of data through connections with existing resources and acquisition of new data resources. 4) To work with undergraduate educators and institutions through the Commonwealth to enhance access to satellite data and encourage its use in their courses.

PA View has:



ChesapeakeView Website



Students complete Humanitarian Mapping.

- 1) Two of the PAView's previous work include assisting Washington, PA of a HAZUS flooding analysis and a creation of a Landfire exercise. Dr. Thomas Mueller and a student completed a HAZUS analysis of Washington, Pennsylvania.
- 2) Led an effort to create Chesapeake View - a collaborative effort between the following State Views – West Virginia, Virginia, Maryland, and Pennsylvania
- 3) The PI has co-led the effort for increased visualization of Earth Observation Day (including initial discussions with AGI, led social media efforts, created lessons, co-led local mapathons, etc.)
- 4) Worked with teachers on using geospatial technology including imagery in their classrooms.
- 5) Worked on Humanitarian Mapping to assist Humanitarian agencies

Federal consortium members identified above do not receive funding from AmericaView.

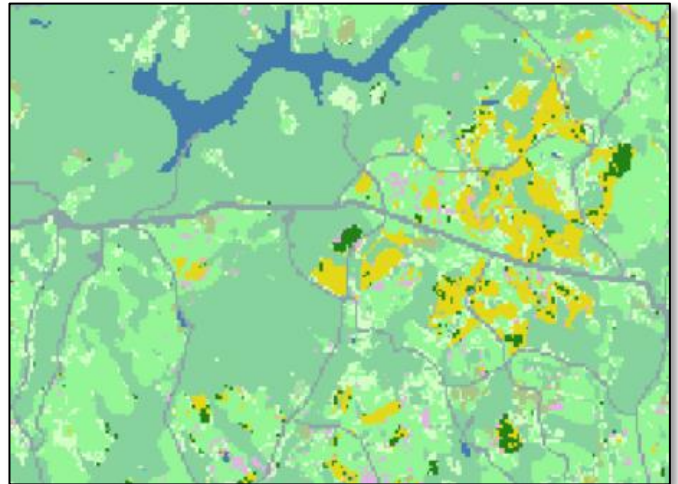
PennsylvaniaView is a member of the AmericaView Consortium, a nationally coordinated network of academic, agency, non-profit, and industry partners and cooperators that share the vision of promoting and supporting the use of remote sensing data and technology within each state. AmericaView is funded by USGS grant agreement G18AP00077.



AmericaView Website:
www.AmericaView.org
Christopher McGinty, Executive Director:
chris.mcginty@americaview.org
Lisa Wirth, Program Manager:
lisa.wirth@americaview.org
Brent Yantis, Board Chair:
rodney.yantis@louisiana.edu

PENNSYLVANIAVIEW 2018 - 2019 ACTIVITIES

PennsylvaniaView's High Impact Activity this year was to build a presentation and exercise for a freshman college-level geography courses using CropScape, a National Agriculture Statistics Service (NASS) web service. It "...provides a raster, geo-referenced, crop-specific land cover map for the continental United States." - <https://data.nal.usda.gov/dataset/cropscape-cropland-data-layer>. The CropScape layers were developed using many sensors including Landsat imagery. After a rough draft was developed, the documents were evaluated by college students and scientists from the National Agriculture Statistics Service (NASS). In the exercise, students evaluate the Top 5 Crops in Pennsylvania and then examine the changes in Pennsylvania crop acreage over the past 10 years.



An example of data from CropScape. The different colors represent different crops. .

The PAView consortium members work on a wide variety of efforts related to remotely sensed data at their universities.

California University of Pennsylvania

Co – PI: Thomas Mueller, Ph.D., GISP

Pennsylvania State University

Clarion University of Pennsylvania

Bucknell University

Villanova University

And Our New Member for 2019-2020

Montour High School



PENNSSTATE



Pennsylvania =View Principal Investigator:

Thomas Mueller, Ph.D., GISP

California University of Pennsylvania

724-938-4255

mueller@calu.edu



<http://www.paview.psu.edu/>

