



PENNSYLVANIAVIEW REMOTE SENSING ACTIVITIES 2014 - 2015



PENNSYLVANIAVIEW TAKES THE LEAD ON EARTH OBSERVATION DAY: SOCIAL MEDIA

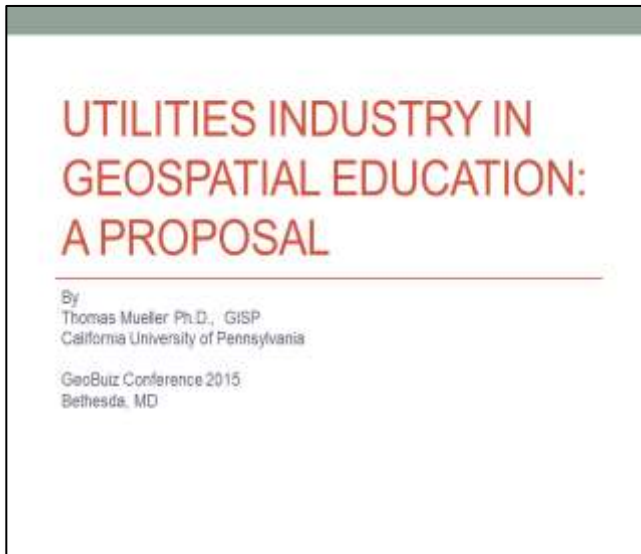
Earth Observation Day (EOD) is an AmericaView educational event to celebrate the power of remote sensing. PennsylvaniaView (PAView) has assumed leadership for this national activity over the past few years. Several StateViews participate with a variety of programs.

To generate even more public interest in Earth Observation Day, PAView created and monitors two social media outlets: a Twitter presence and a Facebook account.

EOD's Twitter account has 80 followers and has been tweeted or retweeted over 500 times. The account tweets information on Earth Observation Day, but also on a variety of remote sensing issues and educational opportunities. The EOD Facebook account is also active and has provided 44 posts and received over 100 "likes" since its beginning in February 2014. See screen capture of Facebook picture on following page.



PENNSYLVANIAVIEW PREPARES EDUCATIONAL MATERIALS



GeoBuiz Conference Presentation

PAView provides multiple opportunities, training educators, in turn preparing a trained workforce. As one significant example, the PAView PI delivered a presentation on education at the 2015 GeoBuiz Conference in Bethesda, MD on August 10 and 11. About fifteen attended a very topical session.

The talk focused on a proposal to use imagery in coursework to prepare students for the natural gas industry. The drilling for natural gas in the Marcellus Shale region realized an increase in GIS jobs for Southwestern Pennsylvania. However, that job growth did not initially lead to a development in Oil and Gas RS/GIS educational resources. This challenging situation proved problematic since the lack of training resources hindered the development of future employees and did not afford them much formal classroom or intern opportunity to work with oil- and gas-related spatial data or understand the industry specific questions. Over the past 4 years, the lead presenter has worked to increase the educational resources in the exploration / drilling sector.

Discussion about the likelihood of new natural gas pipelines in Pennsylvania has recently emerged. So, now the need for preparing and offering educational resources on pipelines must be anticipated. The PI's presentation focused on pipeline educational resources. The presenter discussed the types of spatial questions that arise when siting pipeline routes. Then through examples of possible pipeline routes, the presenters demonstrated how the spatial data and imagery could be utilized to answer a wide variety of relevant questions. Frequently asked questions, solid answers and practical examples can be integrated into university assignments using the guidance from this presentation. Discussion about the supports and challenges to create the resources needed to build this educational program was also covered.

PennsylvaniaView is a member of the AmericaView Consortium, a nationally coordinated network of academic, agency, non-profit, and industry partners and cooperators that share the vision of promoting and supporting the use of remote sensing data and technology within each state.



AmericaView Website:

www.AmericaView.org

Roberta Lenczowski, Executive Director:

roberta.lenczowski@sbcglobal.net

Debbie Deagen, Program Manager:

debbie.deagen@montana.edu

Russell Congalton, Board Chair:

russ.congalton@unh.edu

BENEFITS TO PENNSYLVANIAVIEW

The goals of PAView are:

- To build partnerships within the Commonwealth to support interests in public domain remotely sensed data
- To create resources for K-12 teachers to utilize in their classrooms to educate students about imagery
- To promote the sharing of data through connections with existing resources and acquisition of new data
- To work with undergraduate educators and institutions through the Commonwealth to enhance access to satellite data and encourage its use in their courses

The value of the PAView consortium to Pennsylvania rests with its ability to further one of the primary goals of the AmericaView program - educating the public about remotely sensed imagery and enhancing public access to data and information.



PENNSYLVANIAVIEW CONSORTIUM MEMBERSHIP



Our consortium members work on a wide variety of efforts related to remotely sensed data at their universities.

California University of Pennsylvania

Co – PI: Thomas Mueller, Ph.D., GISP

Pennsylvania State University

Co – PI: Maurie Kelly, Ph.D.

Clarion University of Pennsylvania

Bucknell University

Villanova University

PennsylvaniaView Co-Principal Investigator:

Thomas Mueller, Ph.D., GISP

California University of Pennsylvania

724-938-4255

Mueller@calu.edu



<http://paview.psu.edu>