



OREGONVIEW REMOTE SENSING ACTIVITIES 2014 - 2015



OREGONVIEW CONSORTIUM DEVELOPMENT & SCOPING

As a new StateView within the AmericaView consortium, OregonView was awarded an affiliate development grant in July 2015. Since then, OregonView has worked to build its membership and establish goals and strategies for 2016 and beyond. In October 2015, new OregonView Director, Chris Parrish, participated in the AmericaView Fall Technical Meeting at USGS EROS Center and delivered a presentation on unmanned aircraft system (UAS) research at Oregon State University (OSU). On December 10, 2015, all current OregonView members participated in a scoping meeting held at the LaSells Stewart Center on the OSU campus. The majority of the meeting was devoted to a brainstorming session covering the following topics: 1) high-impact activities for 2016 and subsequent years, 2) collaboration between member organizations, 3) STEM education opportunities and needs (e.g., lesson plan development and teacher workshops) within Oregon, and 4) data dissemination needs. Leveraging the professional contacts of current OregonView members, potential new board members have been identified within the Oregon Coastal Management Program, Oregon Explorer, and Confederated Tribes of Warm Springs.

Since OregonView is a new consortium, a primary focus in 2016 will be introducing OregonView to geospatial leaders in the state through presentations at regional conferences and workshops. OregonView consortium members are already serving on the conference committees and/or planning for participation at the 2016 GIS In Action Conference (hosted by ASPRS and URISA) and the Northwest GIS User Group Conference.

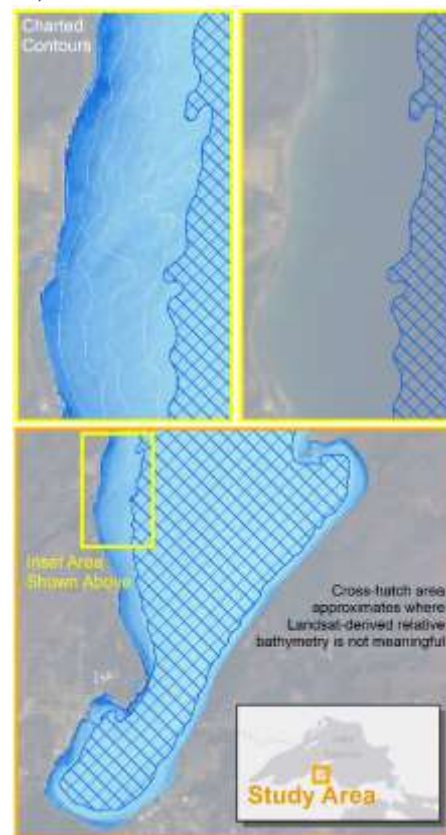
In the current year (2015–2016), OregonView’s high impact activity will entail retrieving bathymetry from Landsat 8 data to assist in coastal characterization. This work will supplement and extend a current OSU project on coastal mapping using NASA Multiple Altimeter Beam Experimental Lidar (MABEL) data. The procedures used for bathymetry retrieval will be evaluated and adapted for use in education and outreach activities.



OregonView participation at the AmericaView Fall Technical Meeting at the USGS EROS Center in Sioux Falls, SD.



Brainstorming session during OregonView Scoping Meeting, held on Dec 10, 2015 at the LaSells Stewart Center at Oregon State University.



OregonView’s 2016 high impact activity (HIA) will entail retrieving bathymetry from Landsat 8 imagery to assist in coastal characterization.

OregonView is a member of the AmericaView Consortium, a nationally coordinated network of academic, agency, non-profit, and industry partners and cooperators that share the vision of promoting and supporting the use of remote sensing data and technology within each state.



AmericaView Website:
www.AmericaView.org
Roberta Lenczowski, Executive Director:
roberta.lenczowski@sbcglobal.net
Debbie Deagen, Program Manager:
debbie.deagen@montana.edu
Russell Congalton, Board Chair:
russ.congalton@unh.edu

BENEFITS TO OREGON

The mission of OregonView is to enhance the beneficial use of remotely sensed data and derived geospatial products in Oregon through:

- Partnerships extending across the government, commercial and academic sectors
- Applications research
- Education and outreach

A number of OregonView's current and planned activities focus on education and outreach, including teacher workshops and lesson plan development. Research activities coordinated by OregonView will be used to develop new procedures and tools for working with remotely-sensed data, which will be disseminated through the OregonView and AmericaView websites.



Landsat mosaic of Oregon (adapted from USGS EROS Center Landsat State Mosaics).

OREGONVIEW CONSORTIUM MEMBERSHIP

The OregonView consortium membership comprises leaders in the remote sensing and geospatial information communities within Oregon and extends across the government, commercial and academic sectors. Member organizations include: Oregon Department of Parks & Recreation, USGS Forest & Rangeland Ecosystem Science Center, Oregon Framework Implementation Team (FIT), Oregon Geospatial Enterprise Office (GEO), GeoTerra, Portland State University (PSU), and Oregon State University (OSU) College of Engineering, College of Forestry, and College of Earth, Ocean, and Atmospheric Sciences.



Federal consortium members identified above do not receive funding from AmericaView.

OregonView Principal Investigator:
Christopher Parrish, Associate Professor
Oregon State University
(541) 737-5688
Christopher.Parrish@oregonstate.edu



<http://research.engr.oregonstate.edu/parrish/oregonview>