

OhioView Education and Outreach

Geospatial Technologies Conference 2015



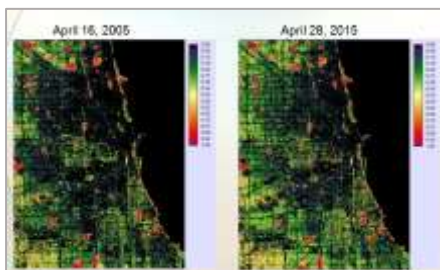
Screen captures from the Geospatial Technologies Conference where participants were avatars, communicating in a virtual environment



OhioView was instrumental in the planning and presentation of the Geospatial Technologies (VTecCon) held on April 29, 2015. Members of OhioView, together with representatives from Air Force Discovery Labs (AFDL) presented applications of geospatial technologies using the 'virtual world' environment of AFDL.

Ohio GIS Conference 2015

OhioView was actively involved in the 2014 Ohio GIS Conference, a collaboration of the Ohio Geographically Referenced Information Program, the County Engineers Association and the Ohio chapter of URISA (Urban and Regional Information Systems Association).



OhioView Applied Research

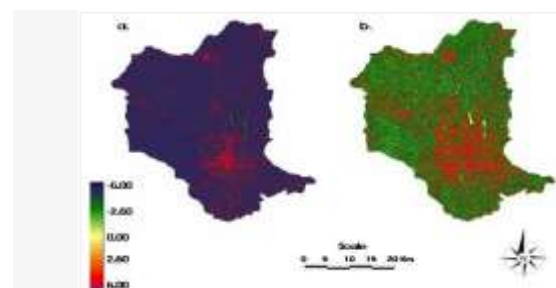
Lake Water Quality Analysis

OhioView remained active in projects targeting and assessing impacts of shoreline modifications on nearshore fish communities and ecosystem function in the Western Basin of Lake Erie. On-going work seeks to classify vegetation using: a) remotely sensed images b) on-ground hyperspectral spectro-radiometer data c) existing (2014) and new oblique shoreline photographs, and d) aerial photographs



Urban Sustainability Assessment

Moving the concept of sustainable development from the theoretical to the practical requires systematic temporal data collection that supports an accessible methodology. Recent work undertaken by OhioView focused on the assessment of development based on the analysis of data acquired from the **Landsat** series of Earth observation satellites. The images below show patterns of human landscape modification and the degree to which ecological services may be compromised.



Component score for development intensity: (a) 1989, (b) 2011

BENEFITS TO OHIO

- Enhanced the assurance of public health and sustainable development programs through geospatial monitoring
- Introduced cutting-edge, virtual world platform approach to educational needs at all levels – through partnership with the Air Force Discovery Lab
- Supplied access to geospatial data - Landsat plus other imagery
- Increased K-12 teacher knowledge - in geospatial technologies and STEM
- Increased K-12 student engagement – hundreds of students given the opportunity to use geospatial technologies and present their projects
- Increased university-level remote-sensing education and student research– products of OhioView’s software pool
- Continued workforce development through workshops held at Ohio GIS conference



VIEW CONSORTIUM MEMBERSHIP

The OhioView consortium is comprised of 14 university partners who reach to the far corners of the state. As of GY-2014 membership in the consortium included:

- | | |
|----------------------------------|-------------------------|
| • Bowling Green State University | Dr. Anita Simic |
| • The University of Toledo | Dr. Kevin Czajkowski |
| • Miami University | Dr. Mary Henry |
| • University of Cincinnati | Dr. Hongxing Liu |
| • University of Dayton | Dr. Umesh Haritashya |
| • Wright State University | Dr. Doyle Watts, |
| • Central State University | Dr. Xiaofang Wei |
| • Ohio State University | Dr. Desheng Liu |
| • Ohio University | Dr. James Lein |
| • Kent State University | Dr. Mandy Munro-Stasiuk |
| • Cleveland State University | Dr. W.B. Clapham |
| • University of Akron | Dr. Linda Barrett |
| • Youngstown State University | Dr. Bradley Shellito |
| • Lakeland Community College | Mark Guizlo |



OhioView State Coordinator:

James Lein, Ph.D.

Ohio University

740.593.1147

lein@ohio.edu



<http://www.ohioview.org>