



NEW MEXICOVIEW 2020 - 2021



NEW MEXICOVIEW 2020 - 2021 ACTIVITIES

New MexicoView saw a realignment, new direction and new coordinator this year as Ken Boykin and Carol Campbell coordinated to transition the *StateView Program Development and Operations* for the state of New Mexico beginning in October of 2020. Attending virtual monthly meetings together and discussing goals and accomplishments of the program at the state level made for a smooth transition. Ken retired from FW&CE at NMSU in December 2020 and Carol Campbell, an Associate Professor and Department Head of Geography at NMSU, stepped in as coordinator in April 2021. Best wishes, Ken!

New MexicoView HIA's for 20-21 included meeting and connecting with researchers and groups affiliated with New MexicoView through Ken (on-going), and a transition of the website to a new platform (close to publishing). April 2021 also invited locals to Celebrate Earth Day by joining the first NMSU-EarthDayBioblitz-2021 (Figure 1). Though still with pandemic restrictions, it was a great dry-run of organizing a citizen science event (Figure 2).

Continuing the translation of the EOD poster to Spanish will remain a goal for New MexicoView. I joined the AmView Education & Outreach committee just in time to contribute slightly to final edits of the EOD poster for 2021: *Viewing Water from Space*. See the Spanish version poster front below, Figure 3, and the corner of the poster back game board Spanish translation: *jugo de mesa*, Figure 4

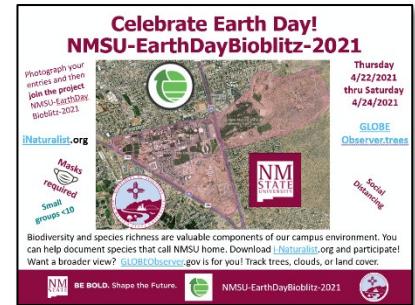


Figure 1. Area shown in pink NMSU Earth Day Bioblitz 2021 encompassing NMSU campus and golf course.

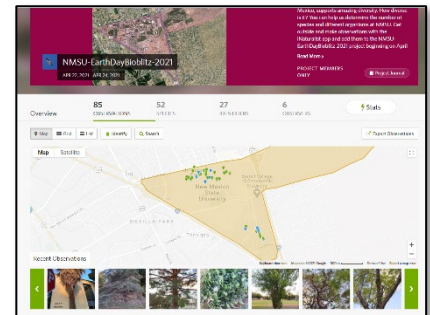


Figure 2. Location of observation report for NMSU-EarthDayBioblitz-2021. April 21-24, 2021



Figure 1. NASA EOD Poster 2021 *Viendo el Agua desde el Espacio*.



Figure 2. Zoom of upper corner of the back of the NASA EOD 2021 poster: game board. Spanish translation: *jugo de mesa*.

Outreach to distribute copies of both versions of the EOD posters will include sharing with the NMSU Department of Language & Linguistics, NMSU College of HEST's Teachers Teaching Teachers group, local Hispanic community centers, the Museum of Nature & Science, Las Cruces, NM. Citizen science efforts are on-going.

New MexicoView is a member of the AmericaView Consortium, a nationally coordinated network of academic, agency, non-profit, and industry partners and cooperators that share the vision of promoting and supporting the use of remote sensing data and technology within each state. AmericaView is funded by USGS grant agreement G18AP00077.



AmericaView Website: www.AmericaView.org
Christopher McGinty, Executive Director: chris.mcginty@americaview.org
Lisa Wirth, Program Manager: lisa.wirth@americaview.org
Brent Yantis, Board Chair: rodnev.yantis@louisiana.edu

BENEFITS TO NEW MEXICO

- April 2021 saw the hosting of the NMSU Bioblitz and Earth Observation Earth Day event.
 - 6 observers
 - 85 observations
 - a diverse group including students, faculty and staff ages 19-60 years
- GLOBE Observer activities (GO)
 - Associated with Bioblitz advertised on the iNaturalist site.
 - Observations within the posted boundary (shown on page one) and student GO posts as far away as El Paso, TX.
 - GO observations of land cover and trees obtained by faculty and students in classes on EOD, GIS Day, and during Geography Week.



Figure 5. NMSU Geography students play the game on the back of the NASA EOD 2021 poster: **Viewing Water from Space** in a campus lobby.

NMSU-EarthDayBioblitz-2021 made for an excellent test run to get the process started, meet potential collaborators, and introduce staff to the protocols of timing, organizing, hosting, and advertising a citizen science event.

Viewing water from space is the perfect game to engage New Mexico communities: citizens, scientists, students, and researchers.

Two geography grad assistants sit at front. Left is Otis A., right is Pablo V., and on his right, Ryan B., geography senior.



Dirty and clean water tokens can be seen in front of the players.

NEW MEXICOVIEW CONSORTIUM MEMBERSHIP



Federal consortium members identified above do not receive funding from AmericaView.

New MexicoView Principal Investigator:

Dr. Carol Campbell

New Mexico State University

575 646-6480

geobird@nmsu.edu



<http://newmexicoview@nmsu.edu>



Facebook.com/New MexicoView



@New MexicoView



@New MexicoView