



NEW MEXICOVIEW 2019 - 2020



NEW MEXICOVIEW 2019 - 2020 ACTIVITIES

NMView collaborates with The Wildlife Society (TWS) state chapters (AZ, NM, and TX) and the Southwest Section in the Southwest Section Geospatial Advisory Committee. TWS is an international professional society focused on wildlife management and conservation. The committee represent government agencies, non-governmental organizations, universities, and private companies.

Participation in this multi-year effort has increased as the committee's efforts continue to conduct outreach and education. NMView assists in posters, factsheets, webinars and workshops. For FY19, the committee presented at the Joint Arizona-New Mexico Chapter meeting in Prescott, AZ attended by 350 people and the Texas Chapter meeting in Corpus Christi, Texas with 600+ attendees. The effort continues to establish strategic partnerships, as well as gathering information on remote sensing data and information requirements. This effort also promotes undergraduate and graduate research and advance education and training while supporting the U.S. DOI Secretarial Priorities.



Lego Landsat model of New Mexico



Spanish translation of the 2020 Earth Observation Day poster

NMView continues to work on the yearly edition of the AmericaView EOD educational poster and provide outreach on the Globe Observer's app and Land Cover module ("Adopt a Pixel"). NMView has completed the Spanish translation of the 2020 installment of the EOD poster and provided this file as a downloadable pdf from the AV, NASA, and NMView websites. We continue to use current Globe Observer curricula to train personnel on the Land Cover module. This includes the creation of a state-based Lego product modeled after Landsat 8.

As part of the NMView EOD efforts, the Globe Observer Land Cover module was used in a Senior/Graduate Student course of 28 students. The students also participated in a MapGive effort in November of 2019. We anticipated more work with area high schools, but that effort was modified with the closing of schools for Covid-19. The impact of the Spanish translated EOD poster is unknown as the pdf is readily available via the AV website and the NASA website. The effort advances education and training, technology transfer, and outreach. The effort also establishes strategic partnerships, promotes undergraduate and graduate research and employment skills as well as support the U.S. Department of the Interior Secretarial Priorities.

New MexicoView is a member of the AmericaView Consortium, a nationally coordinated network of academic, agency, non-profit, and industry partners and cooperators that share the vision of promoting and supporting the use of remote sensing data and technology within each state. AmericaView is funded by USGS grant agreement G18AP00077.



AmericaView Website:

www.AmericaView.org

Christopher McGinty, Executive Director:

chris.mcginty@americaview.org

Lisa Wirth, Program Manager:

lisa.wirth@americaview.org

Brent Yantis, Board Chair:

rodney.yantis@louisiana.edu

BENEFITS TO NEW MEXICO

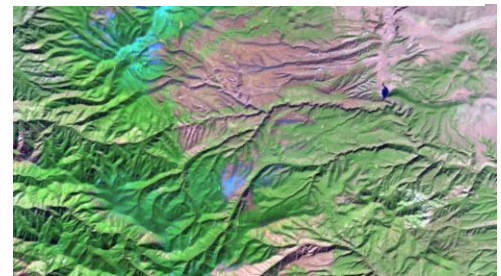
New MexicoView is working to provide increased awareness about remote sensing data, products, and the uses of the data, and to facilitate methods to get the data into user's hands. Remotely sensed data are used in New Mexico by state and federal agencies, universities, private entities, and non-profit organizations. Uses have included natural resource management activities (including fire and range management), and biodiversity conservation. A challenge for the New Mexico remote sensing community is to get applications into the hands of managers in a format that can be applied on the ground. These applications have been developed by USGS, USDA, and New MexicoView partners. The New MexicoView consortium is working on methods to bring the research and application communities together in New Mexico. These efforts include:

- Expertise
- Collaboration and community building
- Data use and applicability
- Cutting edge applications
- State and regional contacts

An example of community building is the collaboration of New MexicoView with The Wildlife Society (Southwest Section and New Mexico Chapter) to support a geospatial advisory committee to provide information to wildlife managers seeking to address ecological questions with remotely sensed data and geospatial technologies.



Students participating in Earth Observation Day Activities



Landsat imagery of the Gila National Forest

NEW MEXICOVIEW CONSORTIUM MEMBERSHIP



Federal consortium members identified above do not receive funding from AmericaView.

New MexicoView Principal Investigator:

Carol L. Campbell, Ph. D.

New Mexico State University

575 646-6480

geobird@nmsu.edu



<http://newmexicoview.nmsu.edu>



Facebook.com/NewMexicoView



@NewMexicoView



@New_Mexico_View