



MICHIGANVIEW 2019 - 2020

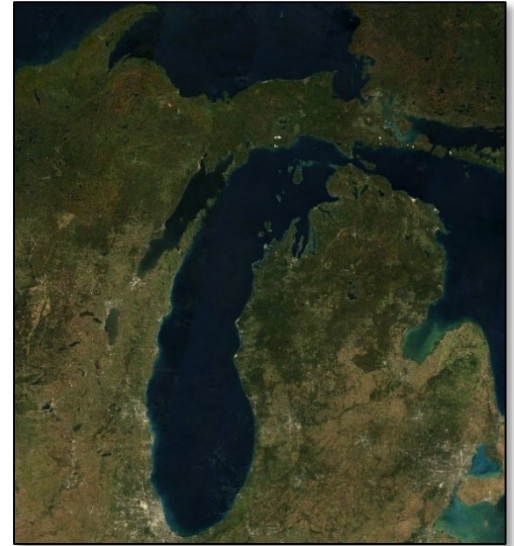


MICHIGANVIEW 2019 - 2020 ACTIVITIES

As a state member of the AmericaView Consortium, MichiganView strives to promote remote sensing within the State of Michigan. The primary goals of MichiganView's activities are to advance remote sensing education and training, technology transfer, and outreach in the state. These activities rely on the establishment of strategic partnerships with educational institutions and non-profit organizations, which serve to connect MichiganView to students and the public.

One of MichiganView's priorities has been providing web-based tools designed to expose students to remote sensing across a variety of education levels. While many past MichiganView activities included hands-on data collection and in-class presentations, the transition to virtual learning by many schools across the state allowed MichiganView to work with educators to develop engaging activities for students to complete while learning from home. These activities were designed to have broad appeal by focusing on state curriculum standards.

MichiganView also works to make remote sensing data and technology more accessible to the public via its website (<http://www.michiganview.org>) by providing access to basic remote sensing tutorials, web-apps showing the results of consortium members, and maintaining an archive of Michigan-specific data remote sensing data.



A cloud-free composite of Michigan's upper and lower peninsulas created with Landsat 8 imagery from September of 2019 and 2020.

The Great Lakes Basin can be subdivided into smaller watersheds that define the boundaries for each individual lake catchment, represented by the colored areas in the map. For example, land in the blue region belongs to the Lake Huron watershed, and land in the green region belongs to the Lake Michigan watershed.

Answer the following questions on your Word Document answer sheet under the "Great Lakes Basin" heading.

What watershed is Detroit in?

What are three large cities in the Lake Michigan watershed?

If a drop of rain fell in Sudbury, Ontario, which watersheds would it pass through before making it past Montreal on its way to the Atlantic Ocean?

Understanding the Earth

Many schools in Michigan are operating remotely for the 2020-2021 school year. MichiganView has created several virtual outreach activities to provide interactive tools accessible for students learning from home. Shown above are screenshots of tools created for various education levels

MichiganView is a member of the AmericaView Consortium, a nationally coordinated network of academic, agency, non-profit, and industry partners and cooperators that share the vision of promoting and supporting the use of remote sensing data and technology within each state. AmericaView is funded by USGS grant agreement G18AP00077.



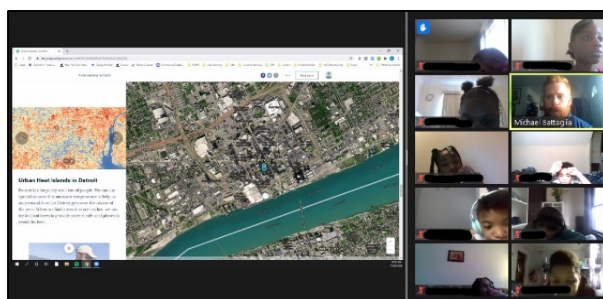
AmericaView Website:
www.AmericaView.org
Christopher McGinty, Executive Director:
chris.mcginty@americaview.org
Lisa Wirth, Program Manager:
lisa.wirth@americaview.org
Brent Yantis, Board Chair:
rodney.yantis@louisiana.edu

BENEFITS TO MICHIGAN

- Activities and tools created by MichiganView are created to assist educators in meeting grade-level-specific science and social studies standards.
- When possible, MichiganView events include hands-on activities that promote the connections between remote sensing and the natural environment.
- MichiganView uses intuitive, modifiable web-based platforms, such as ESRI StoryMaps, to create engaging activities that can be easily customized for individual schools or organizations. Examples include:
 - *Great Lakes Watersheds and Water Quality (Community College Level):*
<https://arcg.is/1KHGiL>
 - *Tools for Understanding the Earth (Elementary School Level):*
<https://arcg.is/zXj0C>
- Publicly available remote sensing data, such as that available via the Landsat archive, are leveraged to encourage widespread public exposure and increase science literacy.



Washtenaw Community College students collect field data to connect in situ measurements to remotely sensed data



4th graders from Mark Murray Elementary School participate in a virtual activity about geospatial

MICHIGANVIEW CONSORTIUM MEMBERSHIP



Michigan Tech



MICHIGAN STATE
UNIVERSITY



MichiganView Principal Investigator:

Dr. Nancy French

Michigan Tech Research Institute

734-913-6844

nhfrench@mtu.edu



<http://www.michiganview.org>