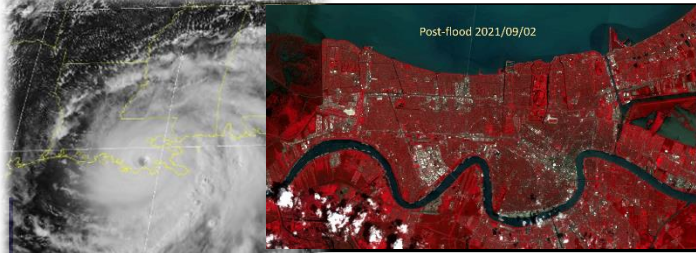


# LOUISIANAVIEW 2020 - 2021

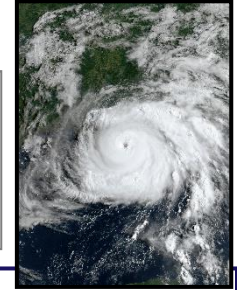


PROMOTING THE BENEFITS of Remote Sensing Science and Applications

## Hurricane Ida.....“Caskets, vaults still displaced”



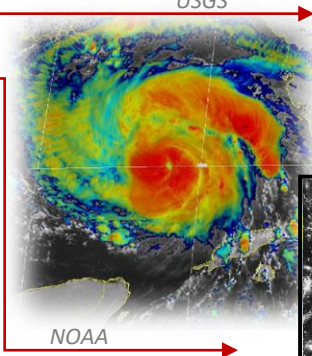
..... Slamming ashore on Louisiana’s eastern coastline with Category 4 winds over 150 mph and up to 47-foot waves, devastating the power grid while leaving over 1 million Louisiana residents ..... in the **dark!**



LaView Responds .....



International Charter



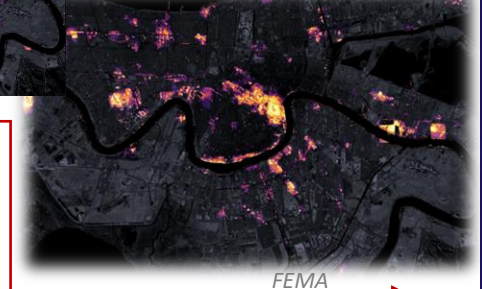
NOAA



USGS



NASA



FEMA

... No Power, No Water, No Gasoline!

**5<sup>th</sup> Strongest Hurricane to hit the U.S.**

**Emergency Response** ..... Working within an informed collaborative network to acquire imagery and data through LouisianaView’s consortium partnerships supporting geospatial emergency responders.

### BENEFITS TO LOUISIANA

22<sup>nd</sup> annual  
Hurricane Season  
Geospatial Data Mining  
Workshop

NASA/UL Lafayette Regional Application Center  
University of Louisiana at Lafayette

2021



### 2<sup>nd</sup> Year Virtual..... Hurricane Season Workshop for Emergency GeoSpatial First Responders

This annual workshop, held in early June each year, played out its twenty-second (22<sup>nd</sup>) year as our second virtual workshop. Through the cooperation of the LouisianaView consortium members and co-sponsored with the local USGS liaison, this workshop was offered free to everyone interested in up-to-date information on data availability for the geospatial emergency responder. Two Hundred and twenty-five (225) Geospatial First Responders from more than 20 different countries attended this workshop held June 3, 8-10, 2021 via Zoom from the UL Lafayette Regional Application Center. This 4-day virtual workshop hosted 21 speakers from multiple Federal, State and Private Response Teams, each presenting their data, websites, links, and contacts while also fielding questions live from those in attendance, proving again and again what a cohesive and informed network of geospatial responders can mean to the inhabitants and economic base within Louisiana, the Gulf of Mexico region and the Caribbean.

Document Link: [https://drive.google.com/file/d/1HhQTFWYLTza8mpSo\\_o4QW5aeQLq8sA2Y/view?usp=sharing](https://drive.google.com/file/d/1HhQTFWYLTza8mpSo_o4QW5aeQLq8sA2Y/view?usp=sharing)

LouisianaView is a member of the AmericaView Consortium, a nationally coordinated network of academic, agency, non-profit, and industry partners and cooperators that share the vision of promoting and supporting the use of remote sensing data and technology within each state.



AmericaView Website:  
[www.AmericaView.org](http://www.AmericaView.org)

Christopher McGinty, Executive Director:

[chris.mcginty@americaview.org](mailto:chris.mcginty@americaview.org)

Lisa Wirth, Program Director:

[lisa.wirth@americaview.org](mailto:lisa.wirth@americaview.org)

Brent Yantis, Board Chair:

[yantis@louisiana.edu](mailto:yantis@louisiana.edu)

# Step aboard the **STEAM** Train !

and follow the .....

## Earth as Art Traveling Gallery Exhibit – the Intersection of .....



**Science, Technology, Engineering, Art and Mathematics**

*All  
Aboard!*



Adjusting to a Virtual audience:

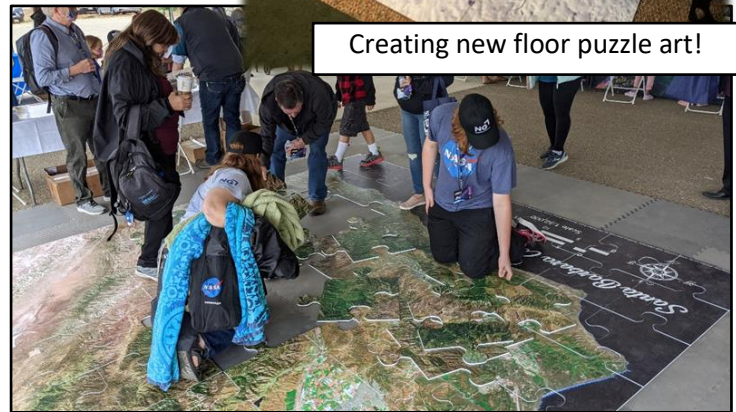
- Small Groups
- Individual Interaction
- Targeted Audiences
- Targeted Events
- On-Line Presentations



Creating new floor puzzle art!



Creating new style in Face Mask  
Protection ..... Landsat Style!



2021 ASPRS Annual Conference  
2021 National Imagery Summit  
Landsat 9 Launch Preparation

### LouisianaView Consortium Membership



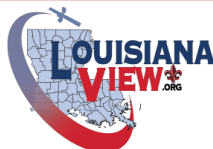
LouisianaView Principal Investigator:

R. Brent Yantis

University of Louisiana at Lafayette

337-344-8882

yantis@louisiana.edu



<http://www.louisianaview.org>



[Facebook.com/LouisianaView](https://www.facebook.com/LouisianaView)