

LOUISIANAVIEW 2019 - 2020



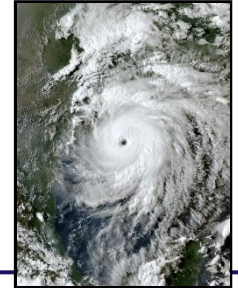
Promoting the Benefits of Remote Sensing Science and Applications

Louisiana "We're Still Standing"



..... Even after 6 direct hits and a slap in the face.

Right: Hurricane Laura late on August 26, 2020 near peak intensity at 150 mph just before landfall.



LouisianaView, along with its many colleagues; just months prior were taking part in the 21st annual (first year virtual) disaster response workshop, were now putting into practice the lessons, tools and network of geospatial first responder contacts that this annual workshop provides for this undaunting emergency response group.

In a year for the record books....

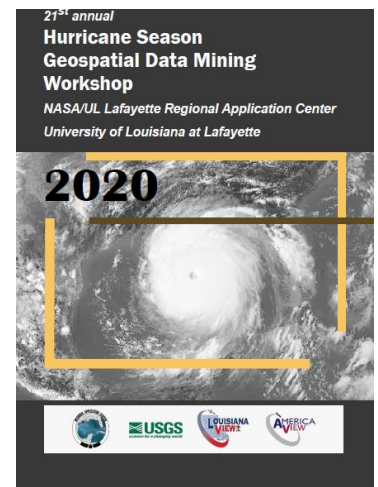
LouisianaView (LaView) responded to the Hurricane season acquiring imagery through sources of The International Charter, FEMA, NASA, NOAA, USGS and state geospatial programs working in collaboration with the state USGS Liaison and multiple state agencies. Louisiana saw the true strength of an informed and networked body of responders in action as the state tackled, **the year of the storms!**

BENEFITS TO LOUISIANA

Data Mining Virtual Workshop for Emergency GeoSpatial First Responders

This annual workshop, held in early June each year, played out its 21st year as our first virtual workshop. Through the cooperation of the LouisianaView consortium members and co-sponsored with the local USGS liaison, this workshop was offered free to those in Louisiana, surrounding states and across the Caribbean interested in up-to-date information on data availability for the geospatial emergency responder. One Hundred and twenty-five (125) Geospatial First Responders from more than 20 different countries attended this workshop held June 4, 9-11, 2020 via Zoom from the UL Lafayette Regional Application Center. This 4-day virtual workshop hosted 24 speakers from multiple Federal, State and Private Response Teams, each presenting their data, websites, links, and contacts while also fielding questions live from those in attendance. This workshop has proven again and again what a cohesive and informed network of geospatial data responders can mean to the inhabitants and economic base for the state of Louisiana and now the Gulf of Mexico and the Caribbean.

https://drive.google.com/file/d/1HhQTfWylTza8mpSo_o4QWSaeQLq8sA2Y/view?usp=sharing



Document Link below:

LouisianaView is a member of the AmericaView Consortium, a nationally coordinated network of academic, agency, non-profit, and industry partners and cooperators that share the vision of promoting and supporting the use of remote sensing data and technology within each state. AmericaView is funded by USGS grant agreement G18AP00077.



AmericaView Website:
www.AmericaView.org
Christopher McGinty, Executive Director:
chris.mcginty@americaview.org
Lisa Wirth, Program Manager:
lisa.wirth@americaview.org
Brent Yantis, Board Chair:
yantis@louisiana.edu

Step aboard the **STEAM** Train !

and follow the

Earth as Art Traveling Gallery Exhibit – the Intersection of



Science, Technology, Engineering, Art and Mathematics

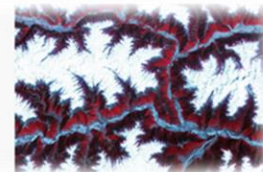
All Aboard! The Fall of 2019 began what was planned as a “*Year on the Move*” with the gallery exhibit traveling across the state, the region..... the nation. Beginning at the Southern Energy Conference in LA after traveling the prior months in Louisiana, South Dakota, and Virginia. *Next Stop*, URISA GIS Pro Conference, where a keynote presentation and Earth as Art exhibit entertained over 500 participants. This event debuted our 12' x 12' floor puzzle that enthralled audiences both young and old. *Moving North*, the



STEAM train embarked for Baltimore, to engage over 300 industry professionals and over 100 visiting students at the 2019 engagement of PECORA. In this traveling gallery exhibition; working with the USGS “Earth as Art” program, utilizing NASA Landsat and other satellite systems, images have been identified

to excite the imagination and entertain creative thinking. Over 60 Images from Satellite systems are displayed; entertaining all with images that depict the science of the Earth and invoke the art of the earth's natural landscape. “*Go West Earth as Art*”, to the Black Hills for the Digital Mapping Association Conference at the South Dakota School of Mines and Technology where 150 Industry and University professionals attended and over 100

university students engaged with the exhibition. It was now time to *Venture South again*, way south, for the 2019 URISA Caribbean GIS Conference in Trinidad with a



new virtual component of the traveling gallery exhibit artwork and presentation on hand. Outreach and teaching materials were distributed and discussions began on the creation of a Caribbean EAA traveling exhibit to tour the islands. *Heading back north* of the Gulf of Mexico, a new undertaking was taking place in Alabama. The images above, are part of the “Mother Earth as Art” gallery exhibit LouisianaView assisted AlabamaView in creating for the state. As the invited speaker for the opening of the exhibit, both public audiences and students were entertained with images, ideas, science and beauty. Auburn University's Department of GeoSciences undergraduate and graduate students developed an exciting exhibit at the Jule Collins Smith Museum of Fine Art. It was now time to depart for yet another adventure down the rails, but ...

like colliding with a herd of cattle on the tracks, *Our Train got De-railed*, but this was no herd, it was COVID-19. LaView retooled and began a new endeavor in the virtual world to educate all on the Earth as Art.

Louisiana Continues Earth As Art Education and Outreach

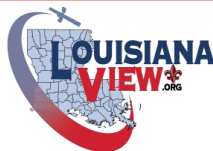
As the head of **STEAM** continued to build again on this traveling exhibit, LouisianaView began working with TexasView to create the Texas as Art collection and will continue to work with states to connect, engage, and encourage **this Intersection of** **Science, Technology, Engineering, Art and Mathematics** to all who are ready to **Board the STEAM Train!**

LouisianaView Principal Investigator:

R. Brent Yantis

University of Louisiana at Lafayette

337-344-8882



<http://www.louisianaview.org>



[Facebook.com/LouisianaView](https://www.facebook.com/LouisianaView)