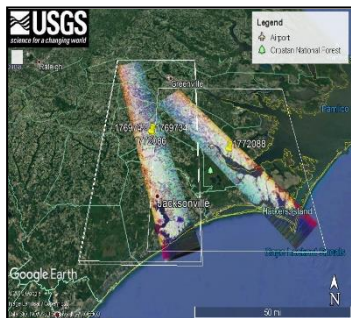


LOUISIANAVIEW 2018 - 2019



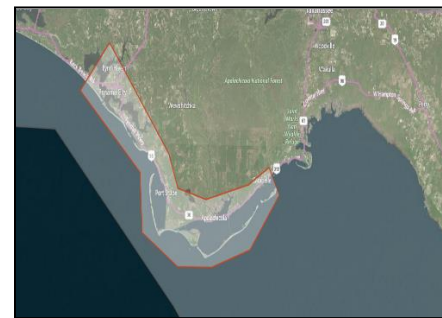
Promoting the Benefits of Remote Sensing Science and Applications

Louisiana Disaster Response From the Carolinas to Florida to the Bahamas



LouisianaView (LaView) responded to Hurricanes Florence and Michael working as part of the International Charter during these historic events of 2018. LouisianaView team members coordinated the acquisition of the International Charter satellite imagery as the state responded to each of these disasters.

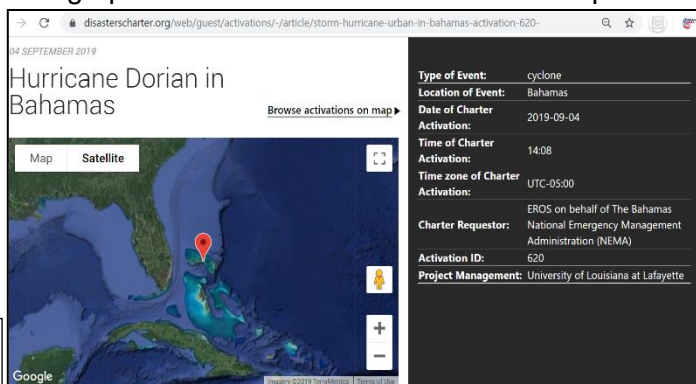
Imagery acquired through the International Charter and processed by members of the LaView/USGS team.



Working with each state, federal response programs, FEMA and the National Guard Bureau geospatial response groups, LaView teamed forces with remote sensing specialist from the USGS Water & Aquatics Research Center to analyze and provide Radar/Optical flood data to geospatial first responders.

Again in 2019, LaView, working with the International Charter, coordinated satellite data acquisition for Hurricane Dorian impact areas across the Bahamas. This activation allowed LaView to assign AmericaView member programs across the AV Network to work as Value Added Providers for remotely sensed data products to aid emergency response programs working the event.

International Charter Dashboard for the project activation ID 620 over the Bahamas



BENEFITS TO LOUISIANA

Louisiana Hurricane Season GeoSpatial Data Mining Workshop



This annual workshop, held in early June each year, is now entering its twentieth (20) year. Through the cooperation of LouisianaView consortium members and co-sponsored with local USGS representatives, this workshop is offered free to those in Louisiana and surrounding states interested in up-to-date information on data availability for the geospatial emergency responder. Fifty-Five (55) Geospatial First Responders attended this workshop held June 6, 2019 at the Regional Application Center in Lafayette, Louisiana.

During the workshop of 2019, USGS representatives of the International Charter were on hand to assist in a GIS-Based Hurricane Tabletop exercise. This workshop has proved again and again what a cohesive network of geospatial data responders can mean to the inhabitants and economic base for the state of Louisiana.

LouisianaView is a member of the AmericaView Consortium, a nationally coordinated network of academic, agency, non-profit, and industry partners and cooperators that share the vision of promoting and supporting the use of remote sensing data and technology within each state.



AmericaView Website:
www.AmericaView.org
Christopher McGinty, Executive Director:
chris.mcginty@americaview.org
Lisa Wirth, Program Manager:
lisa.wirth@americaview.org
Brent Yantis, Board Chair:
rodnev.yantis@louisiana.edu

Intimate Science – *the Intersection of* **Science, Technology, Engineering, Art and Mathematics**

In this traveling gallery exhibition, working with the USGS "Earth As Art" program, utilizing NASA Landsat and other Satellite Imagery we have comprised images to excite the imagination and entertain creative thinking. Over 50 Images from Satellite systems were displayed for multiple gala events and school visitations during 2018 and 2019, entertaining a host with images that depict the science of the Earth and invoke the art of the earth's natural landscape.



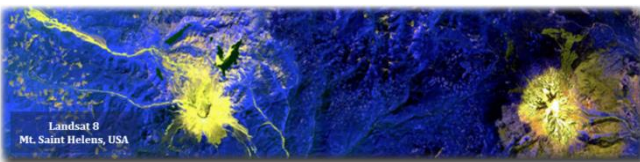
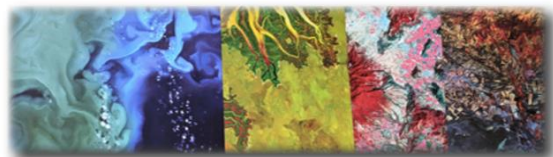
Earth as Art on Display
Mitchell, South Dakota



"The traveling Earth as Art gallery exhibit elevated our Earth Day event at New Orleans City Park artistically and scientifically."
**-Liz Lowe,
New Orleans City Park**

All anyone has to do

is bring along their Imagination!



Landsat 8
Mt. Saint Helens, USA

A Story Map
"Growing" A Future
Atchafalaya & Wax Lake Delta

The natural color satellite image shows the high amount of sediment deposition (white to light tan colors indicate suspended sediments in water) from both the Wax Lake and Atchafalaya River Deltas.

The visible bands are used in this combination, ground features appear in colors similar to their appearance to the human visual system, healthy vegetation is green. This band combination provides the most water penetration and superior sediment and bathymetric information. It is also used for urban studies.

This image was chosen to be displayed in the Earth As Art Gallery.

(Photo From Sentinel 2 April 16, 2018)

University of Louisiana at Lafc. LOUISIANA

**Poverty Point:
A Louisiana Treasure**

Jason Duplechin
ENVS487 – Advanced GIS Analysis & Applications
University of Louisiana at Lafayette

A look at Louisiana's World Heritage Site of Monumental Proportions

What if someone told you that there is a man-made construction in North America that is nearly as old and as massive as the Pyramids at Giza, Egypt?

Well, there are secrets, such a sacred place in Northeast Louisiana

The Gallery Exhibit is a program that provides opportunities for students to produce artwork from satellite and other remotely sensed images. The art describes features, events, or impacts on, or near, the surface of the earth. The artwork is critiqued and selected to serve as part of an educational and informative traveling exhibit, facilitating conversation and understanding of our world through a unique and memorable perspective. ESRI Story Maps are a tool utilized by students to create these unique educational outreach perspectives.

Louisiana Continues Earth As Art Education and Outreach

Earth As Art has been a theme for the LouisianaView program over the course of 2018-2019, visiting many areas across the United States, bringing science and art together for the viewing public. The Exhibit participated in Earth Observation Day in City Park, New Orleans, exhibited at science festivals, the state Remote Sensing Conference and multiple viewings in South Dakota, Baltimore, MD, Reston, VA and Lafayette, LA.

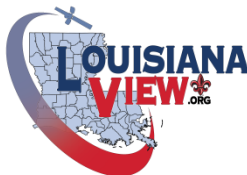
LouisianaView Principal Investigator:

R. Brent Yantis

University of Louisiana at Lafayette

337-344-8882

yantis@louisiana.edu



<http://www.louisianaview.org>



[Facebook.com/LouisianaView](https://www.facebook.com/LouisianaView)