

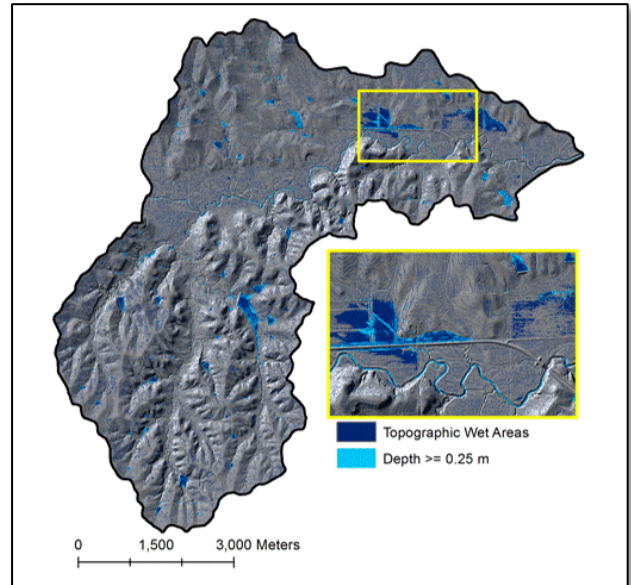


# KANSASVIEW 2019 - 2020

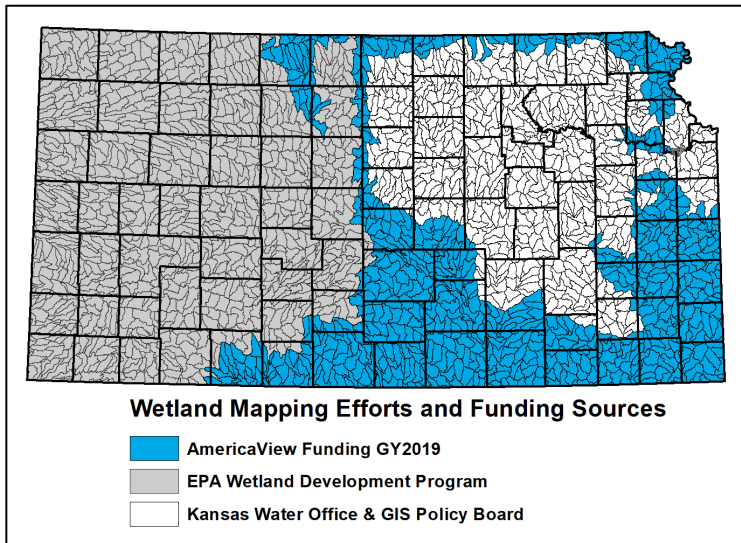


## KANSASVIEW 2019 - 2020 ACTIVITIES

In GY19 KansasView completed the development of a statewide wetlands database for Kansas. Developing a statewide wetland database is a collaborative effort among multiple state and federal agencies, including KansasView. This activity supports secretarial priorities by focusing on remote sensing needs at the local and state levels and, by identifying and collaborating with our stakeholders, maintains a relationship of trust between KansasView and local, state, and federal agencies. KansasView leveraged previous wetland mapping efforts to map the remaining 30% of Kansas using statewide flown LiDAR data. Stakeholders have and will continue to use the Kansas wetland database for local and regional conservation efforts. The statewide database is publicly available through the KansasView website and the state data repository. A young professional who graduated in May of 2020 with a degree in remote sensing and geographic information systems was hired to map the remaining wetland areas in Kansas, shown as blue in the map below.



The topographic wetness index (TWI) identifies potential wetland areas with low slope and high flow accumulation.



The statewide wetland database was developed using multiple funding sources, including AmericaView (blue). Mapping occurs at a sub-watershed.



Aerial view of playa wetlands in Western Kansas. Image Source: Kansas Geological Survey.

KansasView is a member of the AmericaView Consortium, a nationally coordinated network of academic, agency, non-profit, and industry partners and cooperators that share the vision of promoting and supporting the use of remote sensing data and technology within each state. AmericaView is funded by USGS grant agreement G18AP00077.

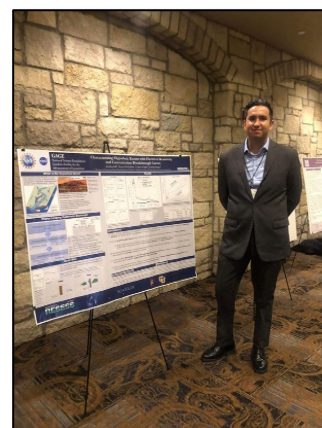


AmericaView Website:  
[www.AmericaView.org](http://www.AmericaView.org)  
Christopher McGinty, Executive Director:  
[chris.mcginty@americaview.org](mailto:chris.mcginty@americaview.org)  
Lisa Wirth, Program Manager:  
[lisa.wirth@americaview.org](mailto:lisa.wirth@americaview.org)  
Brent Yantis, Board Chair:  
[rodney.yantis@louisiana.edu](mailto:rodney.yantis@louisiana.edu)

## BENEFITS TO KANSAS

Stakeholders for the wetland database include:

- Ducks Unlimited
  - Kansas Alliance of Wetlands and Streams
  - Kansas Biological Survey
  - Kansas Department of Wildlife, Parks, and Tourism
  - Kansas Water Office
  - Playa Lake Joint Venture
- 
- KansasView also maintains connections with consortium members for potential collaborations in outreach, education, and research.
  - KansasView is represented at the GIS Policy Board, a consortium for promoting geospatial technology, acquiring critical geospatial datasets, and funding database development that support the mission and objectives of the Kansas Water Office. Over the years, many of these agencies have provided joint funding for projects partially funded by AmericaView.
  - KansasView awards mini-scholarships to students at partner institutions to support remote sensing related education and research activities.



*KansasView sponsored 13 students and 1 professor from Haskell Indian Nations University to attend and present at the regional AAG conference.*

## KANSASVIEW CONSORTIUM MEMBERSHIP



*Federal consortium members identified above do not receive funding from AmericaView.*

KansasView Principal Investigator:

Dr. Dana Peterson  
University of Kansas  
785-864-1510  
dpeterson@ku.edu



<http://www.ksview.org>