



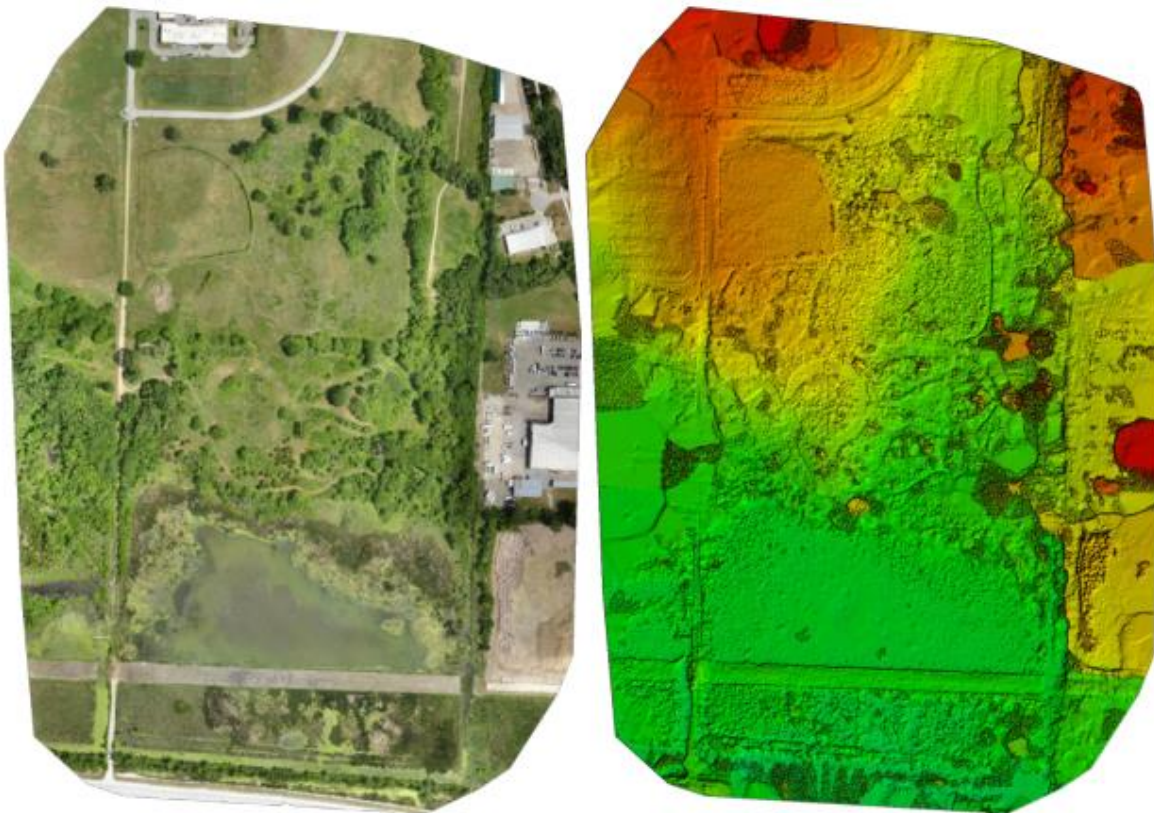
KANSASVIEW REMOTE SENSING ACTIVITIES 2015 - 2016



REMOTE SENSING EDUCATION AT HASKELL INDIAN NATIONS UNIVERSITY

KansasView has maintained a long-term relationship with Haskell Indian Nations University in Lawrence, Kansas, for the purpose of promoting remote sensing education as part of Haskell's emphasis in Geographic Information Science. Highlights of KansasView activities during the 2015-2016 year included:

- An introductory course in remote sensing (Geography 340) taught by Professor Stephen Egbert, KansasView PI, and Joshua Meisel, Haskell GIS instructor – Spring 2016.
- Mentoring a Haskell graduate in the University of Kansas PREP program, a bridge program to facilitate the transition of minority students into graduate school.
- Establishment of a relationship between Tukup Technologies, LLC and Haskell. Tukup is a Tribally owned 8(a) technology firm with a focus on Geospatial Technologies, Software Development, and IT Support. Tukup has committed to creating a geospatial internship for Haskell students at the company and visited the campus in June 2016 to demonstrate its UAS mapping capabilities to students, staff, and faculty (below).



Orthomosaic created by digitally merging hundreds of individual air photos (left) and digital surface model showing heights of trees and other objects (right) of a portion of the campus of Haskell Indian Nations University obtained from a UAS mission flown by Tukup Technologies, LLC in June 2016.

KansasView is a member of the AmericaView Consortium, a nationally coordinated network of academic, agency, non-profit, and industry partners and cooperators that share the vision of promoting and supporting the use of remote sensing data and technology within each state.



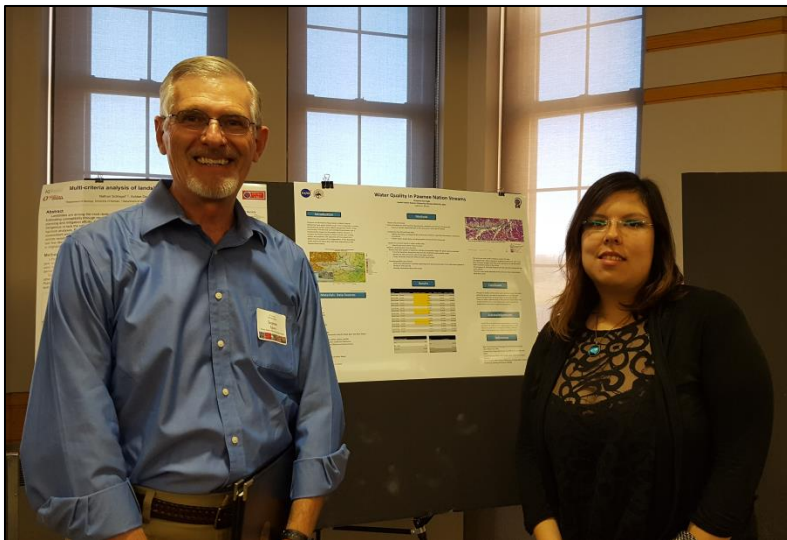
AmericaView Website:
www.AmericaView.org
Roberta Lenczowski, Executive Director:
roberta.lenczowski@sbcglobal.net
Chris McGinty, Program Manager:
chris.mcginty@americaview.org
Jarlath O'Neil-Dunne, Board Chair:
Jarlath.ONeil-Dunne@uvm.edu

BENEFITS

Haskell Indian Nations University, founded in 1884, is one of the largest tribal universities in the U.S. and one of only two whose charge is to serve all 500-plus U.S. Tribes and Alaska Native communities.

KansasView's relationship with Haskell Indian Nations University has provided benefits to its students, to the Tribes of the State of Kansas, and to Tribes throughout the U.S., including:

- Remote sensing education of Haskell students as part of a highly successful program in Geographic Information Science that has placed graduates in Tribal positions, government agencies, and the private sector.
- Workshops for Tribal employees involved in GIS, environmental management and policy, and land management.
- An introduction to agencies and companies using remote sensing through technology demonstrations, guest lectures, and internships.



Cheyenne Sun Eagle, PREP Program student and graduate of Haskell Indian Nations University, at poster presentation of her research with KansasView PI Stephen Egbert.

KANSASVIEW CONSORTIUM MEMBERSHIP

KansasView's consortium membership is strengthened by involvement in a number of collaborative efforts throughout the year that facilitate the sharing of information and resources of KansasView. Regular interactions with the **Kansas GIS Policy Board**, whose members are appointed by the Governor to represent federal, state, and local stakeholders from across Kansas, offer an effective way to share expertise on the use of a range of remote sensing data for a variety of applications, including lidar, historical aerial photography, and satellite imagery. Through joint grant funding from the Policy Board and AmericaView, KansasView has provided several key datasets for the state, including land cover and inundation mapping.

The **State of Kansas Data Access and Support Center (DASC)**, the state's geospatial data clearinghouse, is also a key consortium member and data development and distribution partner on projects. By collaborating with DASC, the longevity of the distribution of archived data can be ensured.

KansasView also participates in activities of the **Kansas Hazard Mitigation Team (KHMT)**, which is coordinated through the Kansas Division of Emergency Management from the Adjutant General's Department. Activities of the KHMT include making periodic updates to the Kansas Hazard Mitigation Plan and providing input on the Federal Emergency Management Agency's Hazard Mitigation Grant Program funds.

Support of educational partnerships is also a key part of KansasView activities. In November of every year the GIS Day activities at the University of Kansas are supported through sponsorship, logistical support, and a remote sensing booth at the career fair. There is also support for the teaching of introductory remote sensing courses and other outreach activities at Haskell Indian Nations University. Opportunities to inspire K-12 students are actively sought and yield very positive feedback from students and teachers alike.



KansasView Principal Investigator:

Dr. Stephen Egbert

The University of Kansas

785 842-7228

segbert@ku.edu



<http://www.ksview.org>

Major funding for the AmericaView Consortium is provided by the U.S. Geological Survey through Grant Number G14AP00002.