



GEORGIAVIEW 2018 - 2019

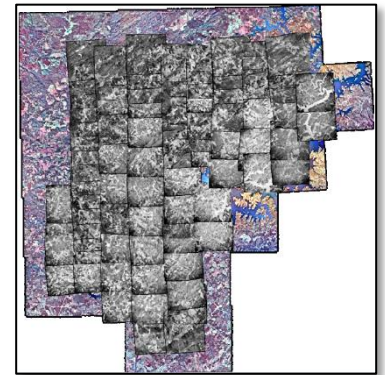


GEORGIAVIEW HISTORY AND SUCCESSES

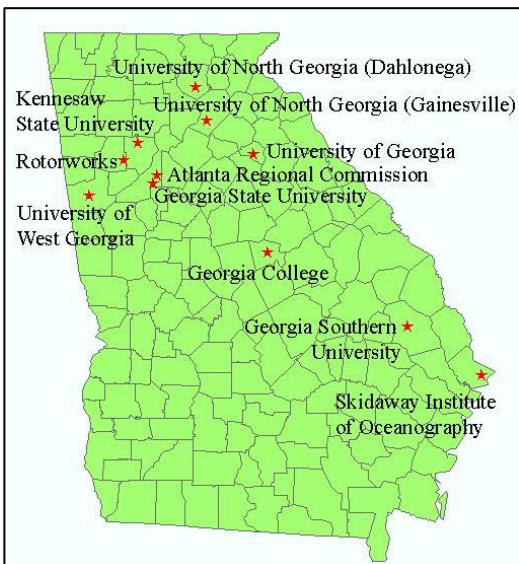


Celebrating the Earth Observation Day with Coweta County Performance Learning Center Students.

Founded in 2003, the GeorgiaView Consortium is a member of the AmericaView Consortium, a nationally coordinated network of academic, agency, non-profit, and industry partners and cooperators that share the vision of promoting and supporting the use of remote sensing data and technology within each state. GeorgiaView's vision is to develop a collaborative geospatial user community in the state of Georgia, within which remote sensing datasets are practical sources for education, applications and research. GeorgiaView members have significantly impacted the State of Georgia through education, remote sensing and geospatial data sharing, research projects, and outreach efforts. GeorgiaView's mission will continue to prepare the future workforce for the dynamic geospatial technology fields by supporting K-12 STEM (science, technology, engineering and math) education, by addressing regional environmental challenges, and by developing collaborative outreach efforts.



Keeping the invaluable legacy of our history. This image is an example of an orthorectified mosaic of 1955-1956 historical airphotos covering the Forsyth County, Georgia that has been performed by Dr. Sharma's team at UNG.



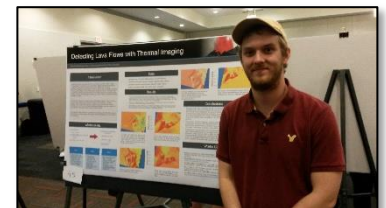
GeorgiaView member institutions.



Educating current workforce by offering drone image processing workshop for colleagues, companies, and graduate students.

AmericaView University

GeorgiaView has developed and maintained an online remote sensing course for the public that contains fourteen modules. Students and instructors from Ohio, California and Georgia have used the online course. URL: <http://www.avuniv.org>.



Supporting undergraduate student research with Landsat imagery and geospatial technology. Steven Whatley presents "Detecting Lava Flows with Thermal Imaging" at the UWG Scholar's Day in 2017.

GeorgiaView is a member of the AmericaView Consortium, a nationally coordinated network of academic, agency, non-profit, and industry partners and cooperators that share the vision of promoting and supporting the use of remote sensing data and technology within each state. AmericaView is funded by USGS grant agreement G18AP00077.



AmericaView Website:
www.AmericaView.org
Christopher McGinty, Executive Director:
chris.mcginty@americaview.org
Lisa Wirth, Program Manager:
lisa.wirth@americaview.org
Brent Yantis, Board Chair:
rodney.yantis@louisiana.edu

GEORGIAVIEW 2018-2019 ACTIVITIES

GeorgiaView's 2018-2019 activities are highlighted into two projects. One is the publication of land cover maps for counties, U.S. congressional districts and regional commissions. Many people underestimate the extensive change of land cover in their living environment. Even if many online platforms provide land cover information, they are not reached to the public easily because of, mostly, technical limits. As a way of helping people's environmental awareness, intuitively and informatively, GeorgiaView has developed image atlas series using community boundaries in Georgia such as 159 counties, 14 congressional districts, and 12 regional commissions. As the first of its series, GeorgiaView has focused on urban and built-up areas. Landsat imagery, air photos, and the National Land Cover Database (NLCD) are critical datasets. Printed atlases were delivered to Regional Commissions, Georgia State Departments, congressional offices, and libraries. This activity supports the National Land Remote Sensing Education Outreach and Research Activity (NLRSEORA) Objectives 4 and 3.

We have already used the atlas twice for zoning recommendations. Thank you!

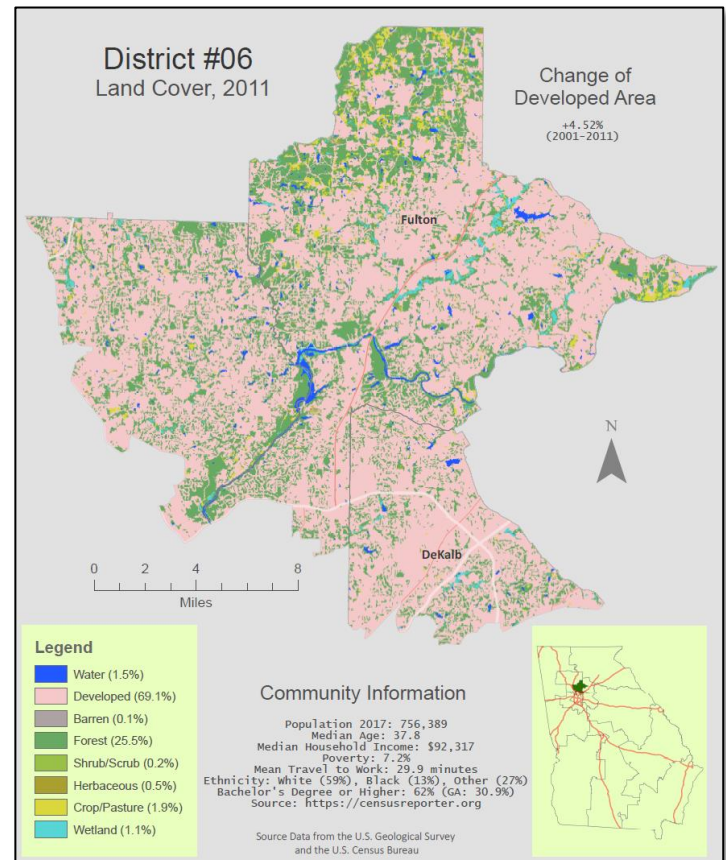
Testimonial by KC Krzic, Planning & Development Department, Rockdale County, GA.

The other project is the outreach activities to K-12 institutions with Landsat imagery, drone imaging, and remote sensing activities. Dr. J.B. Sharma and University of North Georgia students performed three outreach activities at West Hall High School and Hirsch Academy.



Professor J.B. Sharma at University of North Georgia has outreached to K-12 institutions to promote STEM education. Shown here is an in-situ thermal image taken at the West Hall High School.

In today lesson I've learned that changes in cities can be big like in Las Vegas the city grew as the years goes by and the population. People need water to survive so the lake of Las Vegas is getting dried which year and I learn what ROYABIV means. We used an EarthEngine to see the changes of earth and cities. (Testimonial by Isaias at West Hall High School)



An example of land cover map showing the U.S. Congressional District 6, Georgia. Situated at the north of metro Atlanta, the District's developed lands reached 69.1% in 2011, and its population growth has never stopped.



Undergraduate students, Jordan Woodall and Daniel Moye, are working on land cover mapping in the UWG GIS Lab.



Outreach with Georgia Land Cover Image Atlas.

Jim Skinner, Senior Principal Planner at Atlanta Regional Commission.



Habte Kassa, Senior Planner, Georgia Department of Transportation.

GeorgiaView Principal Investigator:

Dr. Jeong Seong

University of West Georgia

678-839-4069 (Office)

jseong@wesrtga.edu



<http://gaview.org>

