



WISCONSINVIEW 2023 - 2024

AmericaViewSM
Empowering Earth Observation Education
americaview.org

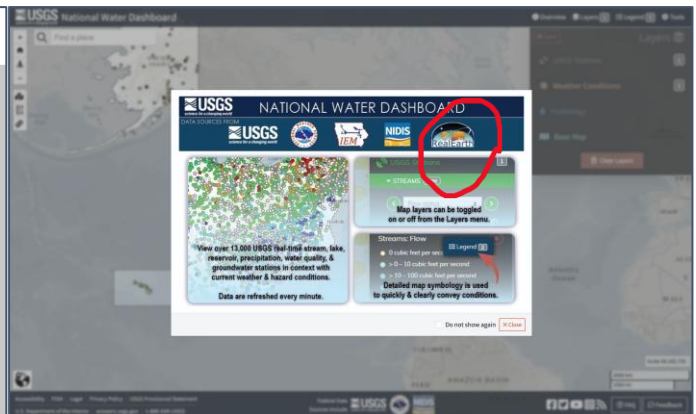
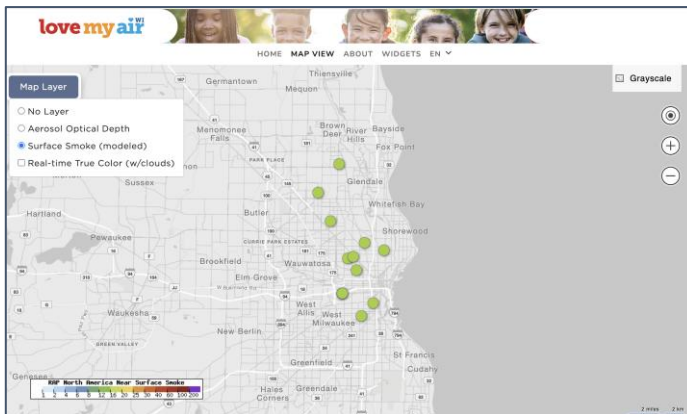
WISCONSINVIEW 2023 - 2024 ACTIVITIES

WisconsinView's "High Impact Activity" leverages its *RealEarth* mapping platform and visualization tool to empower Earth observation education and outreach. The goal is to assist StateView members of AmericaView in sharing educational materials and research results by utilizing *RealEarth* as an Earth science communication tool. The platform is flexible and works in both web browsers and mobile devices. Mobile devices with locational services give educators an opportunity to put their students "into the data" as an immersive experience. *RealEarth* is also being used to bring imagery into third-party websites such as the USGS National Water Dashboard and LoveMyAir - Wisconsin.



WisconsinView launched its new website in April 2023, continuing its mission of coordinating remote sensing imagery access and use. The site includes educational tools, embedded *RealEarth* maps, and data discovery interfaces. Visit <https://wisconsinview.org>

RealEarth is a flexible tool that allows visualization of nearly any spatial data. The *RealEarth* platform facilitates data visualization across the atmospheric science and Earth science domains. *RealEarth* is structured around time and location, making it possible to synchronize visualization and animation of data of different types. Because much of the imagery in *RealEarth* is acquired and displayed in near real-time, it is useful for event-based monitoring of severe weather events and natural hazards like wildland fires and flooding. It is being used by the prototype NOAA Next Generation Fire System (NGFS) to pair near real-time fire detections with related satellite imagery and land cover maps. This HIA advances education, training, technology transfer, and outreach.



WisconsinView partners with organizations to bring web map services into visualization platforms. The left image shows a *RealEarth* smoke layer in a citizen science air quality network of schools called "Love My Air" featuring Milwaukee, WI. The right image shows the USGS National Water Dashboard crediting *RealEarth* for weather imagery data layers they are using. <https://dashboard.waterdata.usgs.gov/app/nwd/en/>

WisconsinView is a member of the AmericaView Consortium, a nationally coordinated network of academic, agency, non-profit, and industry partners and cooperators that share the vision of promoting and supporting the use of remote sensing data and technology within each state. AmericaView is funded by USGS grant agreement G23AP00683.

AmericaViewSM
Empowering Earth Observation Education
americaview.org

AmericaView Website:
www.AmericaView.org
Christopher McGinty, Executive Director:
chris.mcginty@americaview.org
Lisa Wirth, Program Manager:
lisa.wirth@americaview.org
Lindi Quackenbush, Board Chair:
lquack@esf.edu

BENEFITS TO WISCONSIN

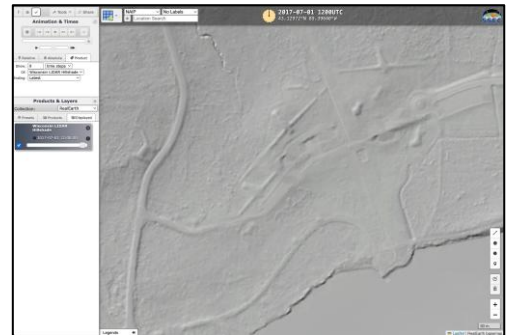
Since its establishment in 2004, WisconsinView has supported Earth observation education and outreach across Wisconsin in the following ways:

- **Presenting** Earth observation data and information at public science events across the State and in local classrooms.
- **Enriching** access to high-value data sets such as LiDAR and aerial photography through a 100TB ftp server.
- **Demonstrating** how to utilize emerging web mapping technologies such as OGC WMTS in workflows by professionals as well as in the classroom.
- **Partnering** with organizations and agencies to leverage expertise and synergies.

WisconsinView collaborates with other StateViews with similar goals and regional concerns, sharing research and education ideas and leveraging the power of the AmericaView network.



Students enjoy a 3D experience of a terrain model at a museum outreach event in Milwaukee, WI.



Shaded relief imagery derived from LiDAR displayed in RealEarth, showing earthworks in Wisconsin made by the Effigy Mounds Culture during the Late Woodland Period (1400-750 B.P.).

CURRENT WISCONSINVIEW CONSORTIUM PARTNERS



Federal consortium members identified above do not receive funding from AmericaView.

WisconsinView Principal Investigator:
Sam Batzli, PhD
Space Science & Engineering Center
University of Wisconsin-Madison
608-263-3126 : sabatzli@wisc.edu



<https://wisconsinview.org>
<https://ssec.wisc.edu/realearth>
@WisconsinView
@SSERealEarth