



TEXASVIEW 2023 - 2024

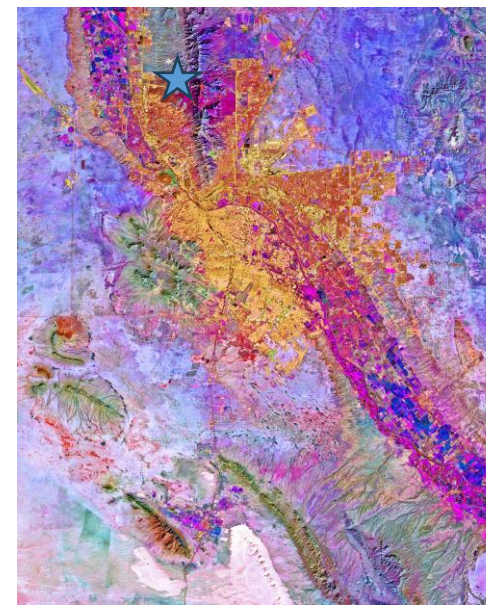
AmericaViewSM
Empowering Earth Observation Education
americaview.org

TEXASVIEW 2023 - 2024 ACTIVITIES

TexasView recognizes the impact on outreach and education through the **Earth as Art** exhibitions hosted by StateViews in recent years. TexasView has developed exhibition materials for **Texas as Art**, with the intent of displaying the exhibition in cooperation with TexasView partner institutions over the next several years. The exhibit is focused on 10 ecoregions of Texas defined by Texas' Department of Parks and Wildlife (TPWD), whose online resources support the exhibit.

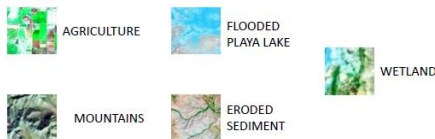
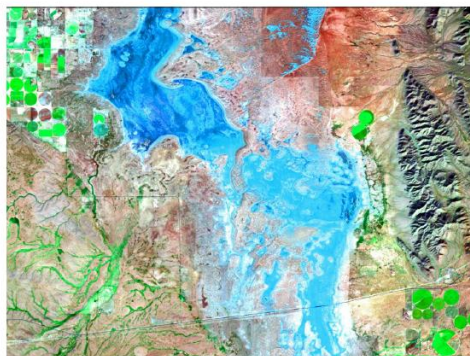
The exhibit highlights the applications of satellite imagery across a broad range of challenges that affect Texas' ecoregions, including landcover change related to urbanization. Focusing on Texas State parks "brings the challenges home" and makes the exhibit relevant for diverse venues and audiences. New artwork is developed for each new host institution, in partnership with local stakeholders.

Texas as Art has been disseminated through public and conference presentations (two); exhibits at two partner institutions (University of Texas at El Paso and Midwestern State University); three public exhibits; three outreach events, and one workshop. Three abstracts were accepted for conferences taking place in the September and October of 2024. On art exhibit has been arranged to begin at El Paso Community College in September of 2024, with a local artist co-exhibiting.



The Rio Grande valley separates El Paso and Juarez across the Texas/Mexico border. Franklin Mountains State Park is one of the largest urban parks in the United States.*

Landcover/Landform Key Salt Basin



Landcover/landform key for art activity.

Implementation of materials for educational outreach continues. Engaging students with recognizing different types of landcover and landforms is the focus of an art activity in which students create their own artwork, choosing colors to represent different landcover and landform types. They learn how to make a map while being artistically creative.



*Partner Sibley Nature Center hosts several annual **Girls in Science** workshops for middle-school girls. In TexasView's event, students interpreted landcover and landforms as art, using Landsat imagery basemaps from the **Texas as Art** exhibit covering the Trans-Pecos Ecoregion.*

TexasView is a member of the AmericaView Consortium, a nationally coordinated network of academic, agency, non-profit, and industry partners and cooperators that share the vision of promoting and supporting the use of remote sensing data and technology within each state. AmericaView is funded by USGS grant agreement G23AP00683.

AmericaViewSM
Empowering Earth Observation Education
americaview.org

AmericaView Website:
www.AmericaView.org
Christopher McGinty, Executive Director:
chris.mcginty@americaview.org
Lisa Wirth, Program Director:
lisa.wirth@americaview.org
Lindi Quackenbush, Board Chair:
lquack@esf.edu

BENEFITS TO TEXAS

Texas as Art is focused on connecting viewers to the ecoregions and landscapes of Texas. By choosing state-managed lands as the “anchor” for each scene, the artwork directs viewers’ attention to the geographic features and human infrastructure around the state parks, wildlife management areas, natural areas, and historic sites that are managed, protected, and restored by the Texas Parks and Wildlife Department (TPWD). Using the NASA Landsat Collage activity as a model, TexasView substituted **Texas as Art** imagery and offered the hands-on activities to teachers from multiple grade levels and disciplines from Midland and Odessa ISDs during a workshop at Sibley Nature Center. The **Texas as Art** exhibit was part of the workshop, and teachers also engaged with quizzes and games including a matching game for change detection and a scavenger hunt for landforms and landcover found on the exhibited artwork.

Teachers could choose among colorful artwork images that linked to State Parks including Big Bend Ranch, Davis Mountains, Palo Duro Canyon, and Monahans Sandhill state Parks, as well as Fort Lancaster State Historic Site, the Sierra Diablo Wildlife Management Area, and the Chinati Mountains State Natural Area. Posters with QR code links to TPWD videos and maps offered information about the ecoregions in which all of these areas are found (Trans-Pecos, Rolling Plains, High Plains).



Teachers created diverse artworks from Texas as Art imagery.

TEXASVIEW CONSORTIUM MEMBERSHIP

Established in 2002, the TexasView Remote Sensing Consortium consists of thirteen university partners distributed across the state. Members include universities large and small, public and private. TexasView members work closely with state, regional and local agencies to promote remote sensing at all levels.

TexasView is founded on the concept of free and public exchange among its members of data, information and knowledge concerning the Earth and its processes, as observed by remote sensing and GIS technologies, for education, research, and local government applications.



Midwestern State



The University of Texas at Austin



The University of North Texas



Sul Ross State University



Texas A&M



Texas Tech



University of Texas of the Permian Basin



Stephen F. Austin



Texas A&M at Corpus Christi



The University of Texas at El Paso



Texas State University



The University of Texas at San Antonio



University of Houston

TexasView Principal Investigator:

Rebecca L. Dodge, Ph.D.

Midwestern State University

404-784-8615

rebecca.dodge@msutexas.edu



[Facebook.com/TexasView](https://www.facebook.com/TexasView)