



KENTUCKYVIEW 2023 - 2024

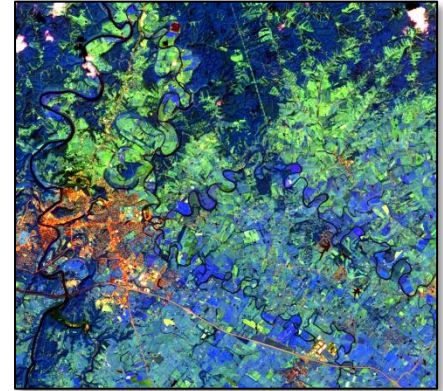
AmericaViewSM
Empowering Earth Observation Education
americaview.org

KENTUCKYVIEW 2023 - 2024 ACTIVITIES

Earth as Art and Science (EAS) Program of KentuckyView: The main objective of “Earth as Art and Science” Program of KentuckyView is to develop materials to produce Art Gallery exhibits of Landsat and other sensors “Earth as Art” imagery to bridge the worlds of Art and Science, and conduct outreach activities in Kentucky. These materials were prepared to educate K-12 students and teachers, undergraduate, and graduate students; workforce professionals; local, state, and federal employees; commercial and industrial workers; resource managers; formal and informal learning groups; Native and underserved populations; and veterans. The EAS program initiated a collaboration between the University of Kentucky/Kentucky Geological Survey (KGS) and Murray State University (MSU) researchers under the umbrella of KentuckyView. The EAS group focused on remotely sensed image selection and related landscape images/maps to educate students and the public.

K-12 outreach activities: The MSU student chapter of ASPRS met two times to establish plans to work with K-12 students on a common geospatial project. Kentuckyview participated the Archaeology Day event held in Wickliffe Mounds State Historic Site, Wickliffe, Kentucky. We used several tools, such as a thermal camera, UAS, imagery, poster, and an EOD game poster, to educate the participants.

State-wide undergraduate and graduate student fellowships: The winners of the 2024 student fellowships awards in the amount of \$500 were Ms. Shreesha Pandeya, Kentucky State University and Mr. Benjamin Hauschild, Western Kentucky University. The students would use their fellowship monies for their research.



Landsat image of Frankfort (above) and Grand Rivers (below), Kentucky. EAS Collection of Murray State University/Kentucky Geological Survey.



Earth Observation Day (EOD) and Earth Day activities: An EOD/Earth Day event was held at MSU on April 17&18, 2024. Students presented their research.



EOD/Earth Day events, Murray, KY.

Happy Earth Week and Earth Observation Day
April 22-26, 2024 every day is an EOD day!

Earth Week
April 22-26, 2024
Planet vs. Plastics

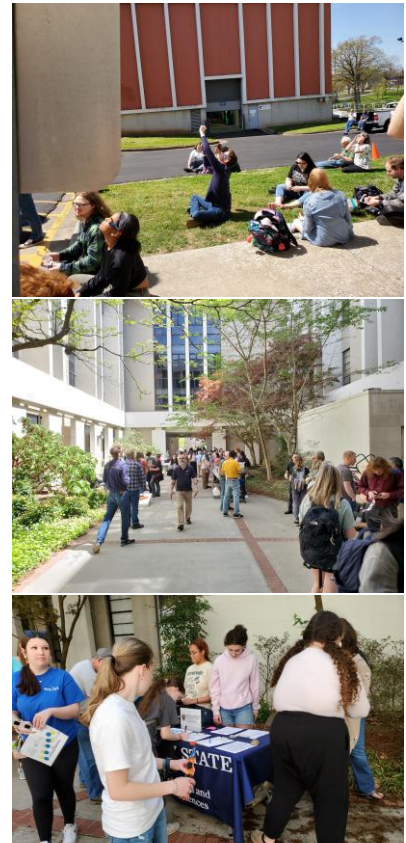
KentuckyView is a member of the AmericaView Consortium, a nationally coordinated network of academic, agency, non-profit, and industry partners and cooperators that share the vision of promoting and supporting the use of remote sensing data and technology within each state. AmericaView is funded by USGS grant agreement G23AP00683.

AmericaViewSM
Empowering Earth Observation Education
americaview.org

AmericaView Website:
www.AmericaView.org
Christopher McGinty, Executive Director:
chris.mcginty@americaview.org
Lisa Wirth, Program Director:
lisa.wirth@americaview.org
Lindi Quackenbush, Board Chair:
lquack@esf.edu

BENEFITS TO KENTUCKY

- KentuckyView is a member of the AmericaView Consortium, a nationally coordinated network of academic, agency, non-profit, and industry partners and cooperators that share the vision of promoting and supporting the use of remotely sensed data and technology within each state. KentuckyView currently comprises 12 member institutions and agencies. As KentuckyView continues to grow we expect that additional universities, colleges, non-profit organizations, and state and federal agencies will add their knowledge, experience, and shared goals to ours as we seek to improve life for citizens throughout the Commonwealth. The primary focus of KentuckyView is on the use of images collected from remote sensors, as well as other geospatial technologies, to support K-16 education, applied research, and public outreach.
- KentuckyView has conducted research on soil moisture, water quality and quantity, and harmful algal blooms. For the state of Kentucky, these projects inform the water research community and improve understanding the environmental conditions, which allows Kentucky to manage the water resources more efficiently.
- We are developing workshop modules to improve K-16 education in the state. Also, more assessment tools have been developed. Remote sensing education and outreach activities, such as workshops, story maps, the EAS program, Earth Observation Day, Earth Day, and GIS Day presentations, have helped inform and educate teachers, students, and the public in Kentucky.



The 2024 Solar Eclipse Day at MSU

KENTUCKYVIEW CONSORTIUM MEMBERSHIP



- Murray State University - MARC and the Department of Earth and Environmental Sciences (official member of record)
- Morehead State University
- Kentucky Division of Geographic Information
- Kentucky Geological Survey
- Eastern Kentucky University – Department of Geography
- Jefferson Community and Technical College
- Kentucky State University
- University of Kentucky – College of Agriculture
- Western Kentucky University – Department of Geography and Geology
- University of Louisville – Center for Geographic Information Sciences
- Northern Kentucky University – History and Geography Department

Federal consortium members identified above do not receive funding from AmericaView.

KentuckyView Principal Investigator:

Dr. Haluk Cetin

Murray State University

(270) 809-2085

hcetin@murraystate.edu



<http://www.kyview.org>



[Facebook.com/KentuckyView](https://www.facebook.com/KentuckyView)



@KentuckyView



@KentuckyView