



ALABAMA VIEW 2023 - 2024

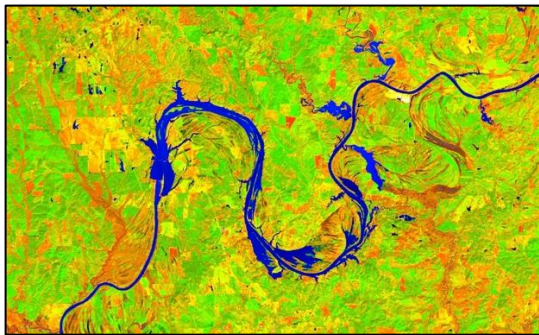
AmericaViewSM
Empowering Earth Observation Education
americaview.org

ALABAMA VIEW 2023 - 2024 ACTIVITIES

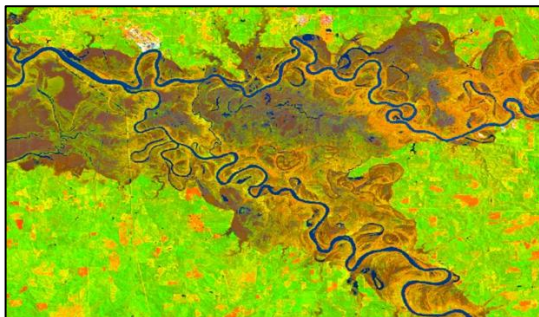
- For this year's HIA, AlabamaView produced Alabama Earth as Art images for three themes.
 - **The Beautiful Earth**
Fiery Folds – a geologic structure near Birmingham, Alabama
Spiraling Through Flood Plains – river in Mobile, Alabama
 - **The Human Footprint**
Teddy Putt – golf course near Dothan, Alabama
Splash of Rainbow – urban heat island Montgomery, Alabama
Tree of Life – human footprint around Tensaw Delta, Alabama
 - **Future of Our Beautiful Earth**
Womb of Nature – hope for a healthy future for the Earth
Serpentine Connection – ecosystem connection of waterways
- Alabama View maintained both a YouTube channel and a Facebook page which highlighted remote sensing and its applications for environmental monitoring.



Image of a golf course named "Teddy Putt". Just one part of the human footprint.



"Serpentine Connection" – waterways connect our ecosystems and must be protected.



"Spiraling Through Flood Plains" – a magnificent display of our beautiful earth in Mobile, Alabama.

- The PIs along with a student contributed a publication in the Special AmericaView edition of the Geographical Bulletin titled "A Remote Sensing Investigation of the 2022 Invasion of Eastern Ukraine on Agricultural Landcover." The student also presented this work at the 2024 ASPRS Mid-South Regional Conference in May.
- We have found exciting opportunities for outreach and display of Alabama Earth as Art Images.
 - Working closely with the Director of Auburn University Dining, we are printing the images to create a display on one of the main walls of Auburn's main dining service facility. There are opportunities to display Earth as Art Images in the other dining halls as well.
 - Collaborating with Auburn's Biggio Center, we have managed to create virtual reality labs where students will have the chance to explore Earth as Art Images. These labs raise awareness on the importance of remote sensing for environmental analysis and awareness.
 - We are compiling images to include in a coffee table book for display on social media and the Alabama View website.

Alabama View is a member of the AmericaView Consortium, a nationally coordinated network of academic, agency, non-profit, and industry partners and cooperators that share the vision of promoting and supporting the use of remote sensing data and technology within each state. AmericaView is funded by USGS grant agreement G23AP00683.

AmericaViewSM
Empowering Earth Observation Education
americaview.org

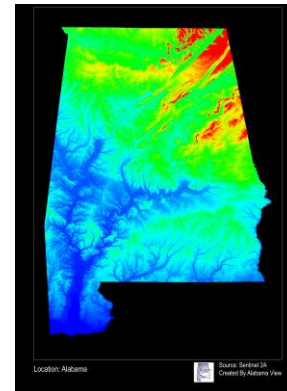
AmericaView Website:
www.AmericaView.org
Christopher McGinty, Executive Director:
chris.mcginty@americaview.org
Lisa Wirth, Program Director:
lisa.wirth@americaview.org
Lindi Quackenbush, Board Chair:
lquack@esf.edu

BENEFITS TO ALABAMA

- AlabamaView has participated in raising awareness on remote sensing and its capabilities.
 - We presented about remote sensing science and education at the AmericaView annual meeting in the spring of 2024.
 - We have set in place a plan for printing and displaying remotely sensed images on the Auburn Campus to raise awareness about remote sensing science and its capabilities.
 - We have had an increase in opportunities to promote remote sensing science on campus including an “Extended Reality Meet and Greet” with the Biggio Center on the Auburn campus to discuss how we are using virtual reality to help promote remote sensing science education.
- The virtual reality modules created will help Auburn students in basic introductory science labs understand remote sensing and its importance in environmental science.
- The conversations between the PIs and graduate and undergraduate students have helped develop critical thinking and collaboration skills. The skills and knowledge derived from their experience aid them in presenting AlabamaView research. Students who have participated:
 - Al Artat Bin Ali
 - Alex Burns
 - Subhasis Ghosh
 - Jake Swartz
 - Michael Selorm Agbozo



The poster presentation presented at America View 2024



This is one of five images which will be on display at the Edge Dining Hall.

ALABAMA VIEW CONSORTIUM MEMBERSHIP



Federal consortium members identified above do not receive funding from AmericaView.

AlabamaView Principal Investigators:

Luke Marzen and Chandana Mitra

Auburn University

334-844-4074

MARZELJ@AUBURN.EDU



<http://www.alabamaview.edu>



Facebook.com/AlabamaView