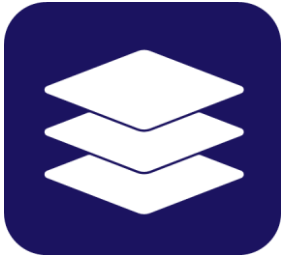


VERMONTVIEW 2022-2023

VERMONTVIEW 2022-2023 ACTIVITIES



BENEFITS TO VERMONT



Expertise

With no remote sensing professionals employed within state government, VermontView is the resource agencies and elected officials turn to when they need unbiased advice.



Analytical Capacity

VermontView leverages the massive computing infrastructure at the University of Vermont to apply big data analytics to extract actionable information from vast remote sensing datasets.



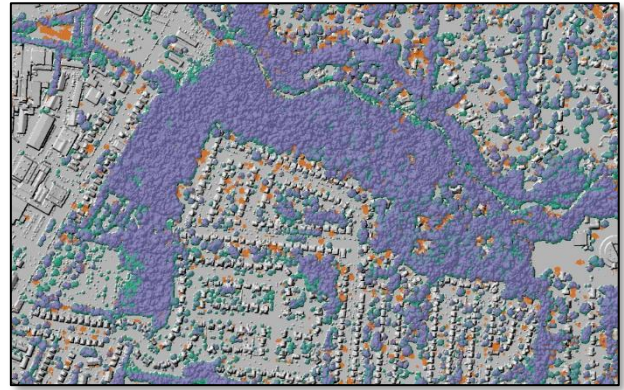
The Future Workforce

Developing the workforce of the future starts today. VermontView is active throughout the state in K-16 outreach and education, providing students with STEM learning opportunities.

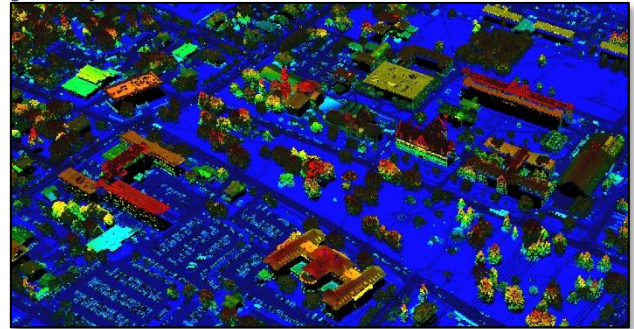


Collaboration

With resources strained we know collaboration is more important now more than ever. VermontView brings people together to solve



VermontView's high-resolution land cover mapping helps local decision-makers understand their communities to help plan a greener future.



LiDAR has proved an invaluable tool for Vermont. VermontView provides technical expertise ranging from quality control to technical assistance.

VERMONTVIEW CONSORTIUM MEMBERSHIP



The
UNIVERSITY
of VERMONT



VermontView Principal Investigator:

Jarlath O'Neil-Dunne
University of Vermont
802.656.3324
joneildu@uvm.edu



<http://www.uvm.edu/rsnr/sal/vermontview>



@jarlathond



<http://letters-sal.blogspot.com/>