



OKLAHOMAVIEW 2021 - 2022

AmericaViewSM
Empowering Earth Observation Education
americaview.org

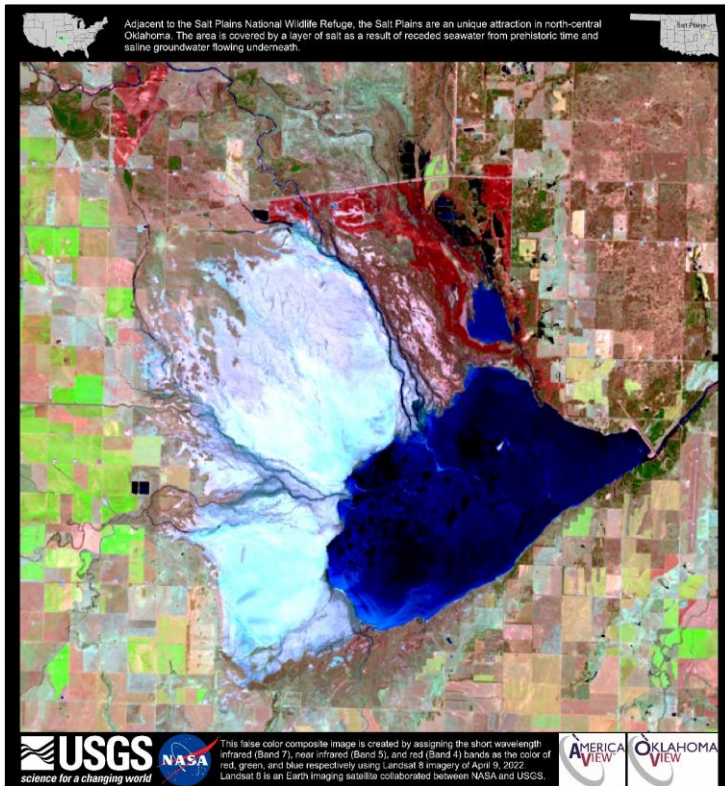
OKLAHOMAVIEW 2021 - 2022 ACTIVITIES

The proposed HIA for GY20 was to reveal the beauty of Oklahoma with remote sensing images to promote the awareness of remote sensing science and technology.

Five unique landscapes were chosen to develop aesthetically beautiful posters with satellite remote sensing images, high spatial resolution imagery from small Unmanned Aerial Systems (sUAS), and ground photography.

Different band combinations have been evaluated to highlight these unique landscapes in Oklahoma. Then color composite images were used to make high quality posters to show Oklahoma as Art. Drone and ground photos were included to spark the viewers' interest in earth observation by connecting the familiar scenery with the satellite image that depicts the landscape from space.

Site	Description
Black Mesa	Oklahoma's highest point, where the Rocky Mountains meet the shortgrass prairie
Gloss Mountains	A series of mesas and buttes with sparkling selenite crystals
Great Salt Plains	Salt lake with white shore area
Lake Eufaula	Oklahoma's largest lake
Little Sahara	Vast sand dunes in the middle, named for its resemblance to the Sahara Desert



False color composite image (band 7, 5, 4) from Landsat 8 showing the Great Salt Plains in Oklahoma



Top: a drone image showing the white shore area
Bottom: a ground photo showing crystal-digging site

OklahomaView is a member of the AmericaView Consortium, a nationally coordinated network of academic, agency, non-profit, and industry partners and cooperators that share the vision of promoting and supporting the use of remote sensing data and technology within each state. AmericaView is funded by USGS grant agreement G18AP00077.

AmericaViewSM
Empowering Earth Observation Education
americaview.org

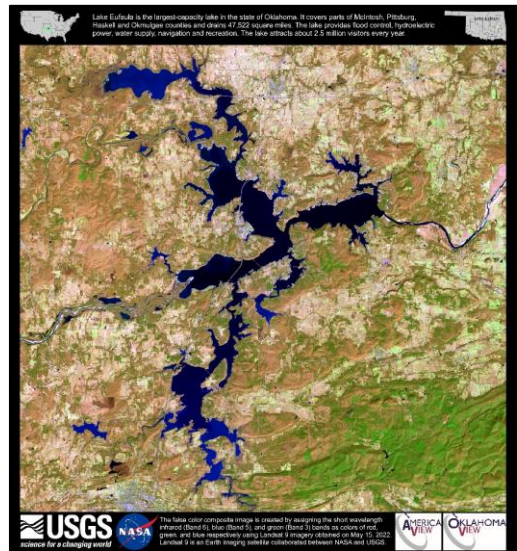
AmericaView Website:
www.AmericaView.org
Christopher McGinty, Executive Director:
chris.mcginty@americaview.org
Lisa Wirth, Program Director:
lisa.wirth@americaview.org
John McGee, Board Chair:
jmcg@vt.edu

BENEFITS TO OKLAHOMA

- Two undergraduate students learned how to download Landsat images and create color composite images in ArcGIS Pro. One undergraduate student learned how to plan field trip and fly sUAS under various conditions.
- Posters made from Landsat images are being reviewed by the consortium members of OklahomaView to further enhance collaboration.
- These posters will be distributed to various groups, such as the consortium members of OklahomaView, local art museums, libraries, and schools.
- We are in the process of making an ArcGIS StoryMaps, using the satellite images, sUAS and ground photos to further improve people's awareness of remote sensing in Oklahoma.



A drone image showing the landscape of Little Sahara



False color composite image (band 7, 5, 4) from Landsat 8 showing Lake Eufaula in Oklahoma



A bird wandering on the shoreline of Lake Eufaula

OKLAHOMAVIEW CONSORTIUM MEMBERSHIP



OklahomaView Principal Investigator:

Yuting Zhou

Oklahoma State University

(405) 744-9168

yuting.zhou@okstate.edu



<https://okview.org/>