

WATCHING OVER TEXAS FROM SPACE

An Earth Observations education resource for grades 4 -12 in support of TEKS covering
Earth Science and Environmental Science Standards

Developed by TexasView with support from Grant Number G14AP00002 from the Department of the Interior,
United States Geological Survey to AmericaView

3.4.4 HOW IS TEXAS CHANGING?

INTRODUCTION

3.4.4.1 TPWD POSTER ACTIVITY

On the following page, you will find imagery over Texas state lands that covers diverse Texas landforms, natural hazards, meteorological events, and human infrastructure. Match images to the descriptions in the exercise. Natural landscape features documented in the imagery include bays, barrier islands, rivers, lakes, mountains, and dune fields. Natural hazard events include flooding, wildfires, and hurricanes.

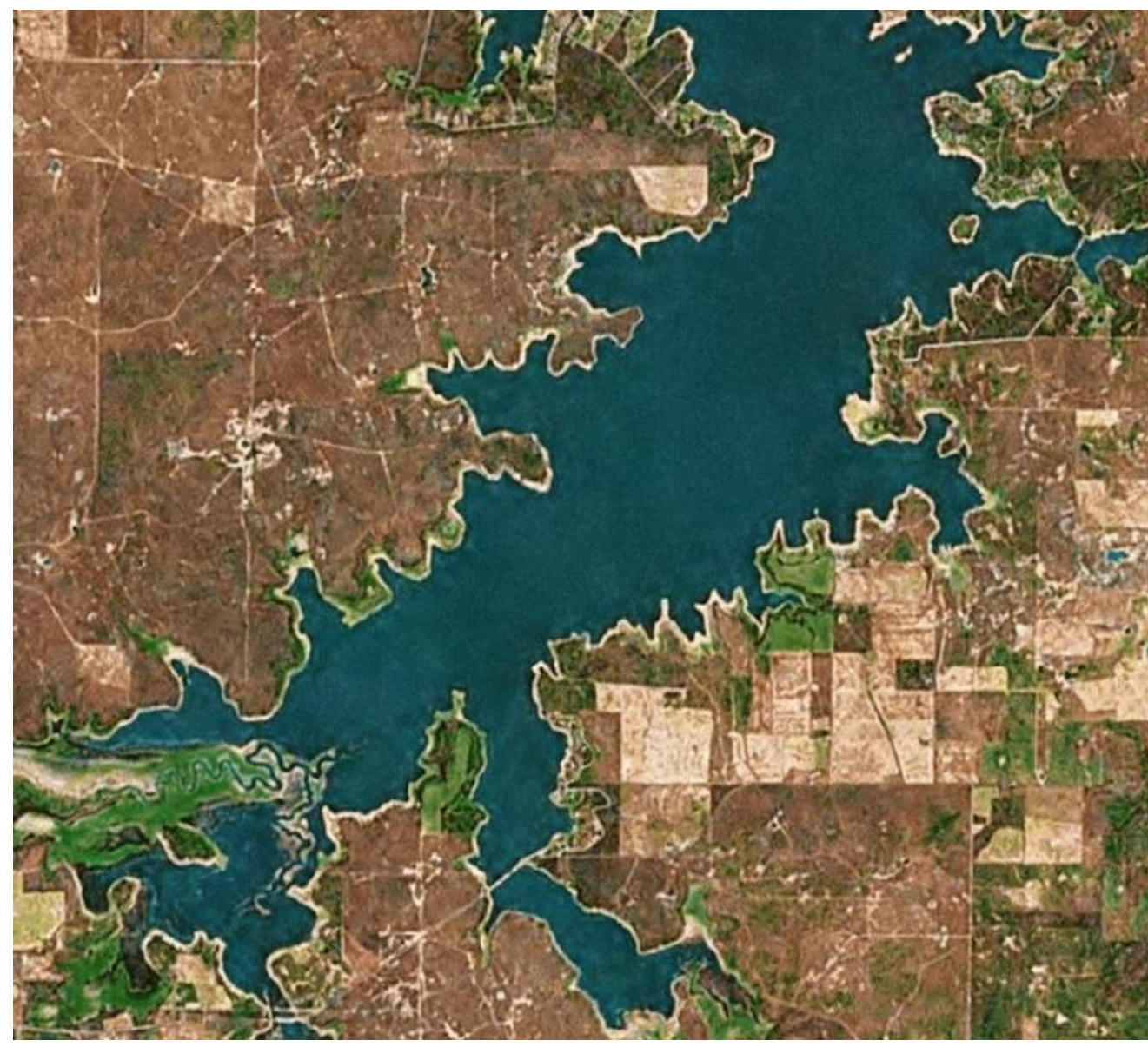
The poster is designed to be printed at 36" X 36" but can be downsized for tabletop use. Students will match images with the descriptions in the center of the poster. Hanging the poster on a magnetic board and providing magnetic numbers works well.

All imagery capture from the Texas Watershed Viewer:

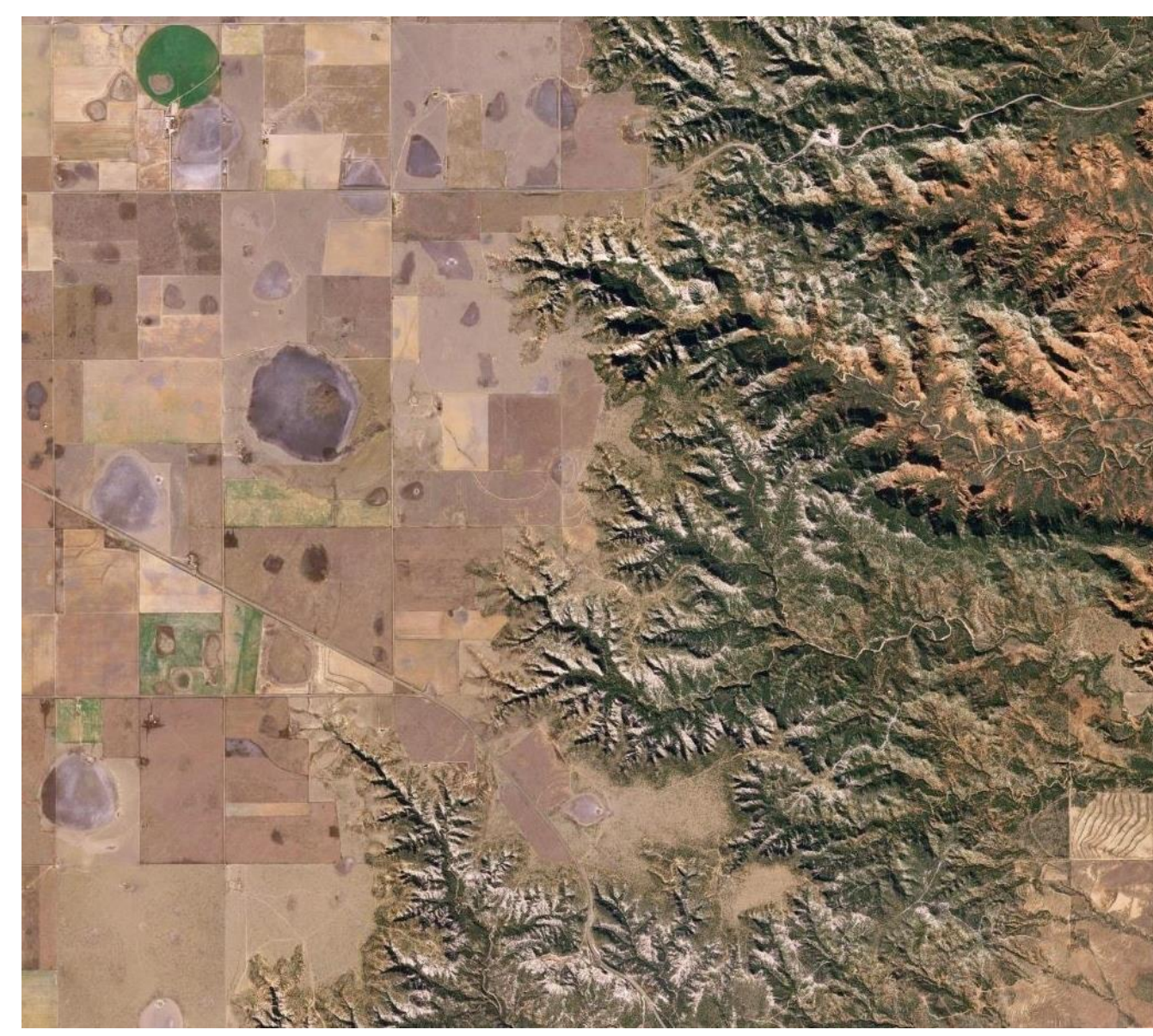
<https://tpwd.maps.arcgis.com/apps/Viewer/index.html?appid=2b3604bf9ced441a98c500763b8b1048> accessed January 22, 2017.

See the Imagery Key for NASA Earth Observatory Lessons and Activities for website links.

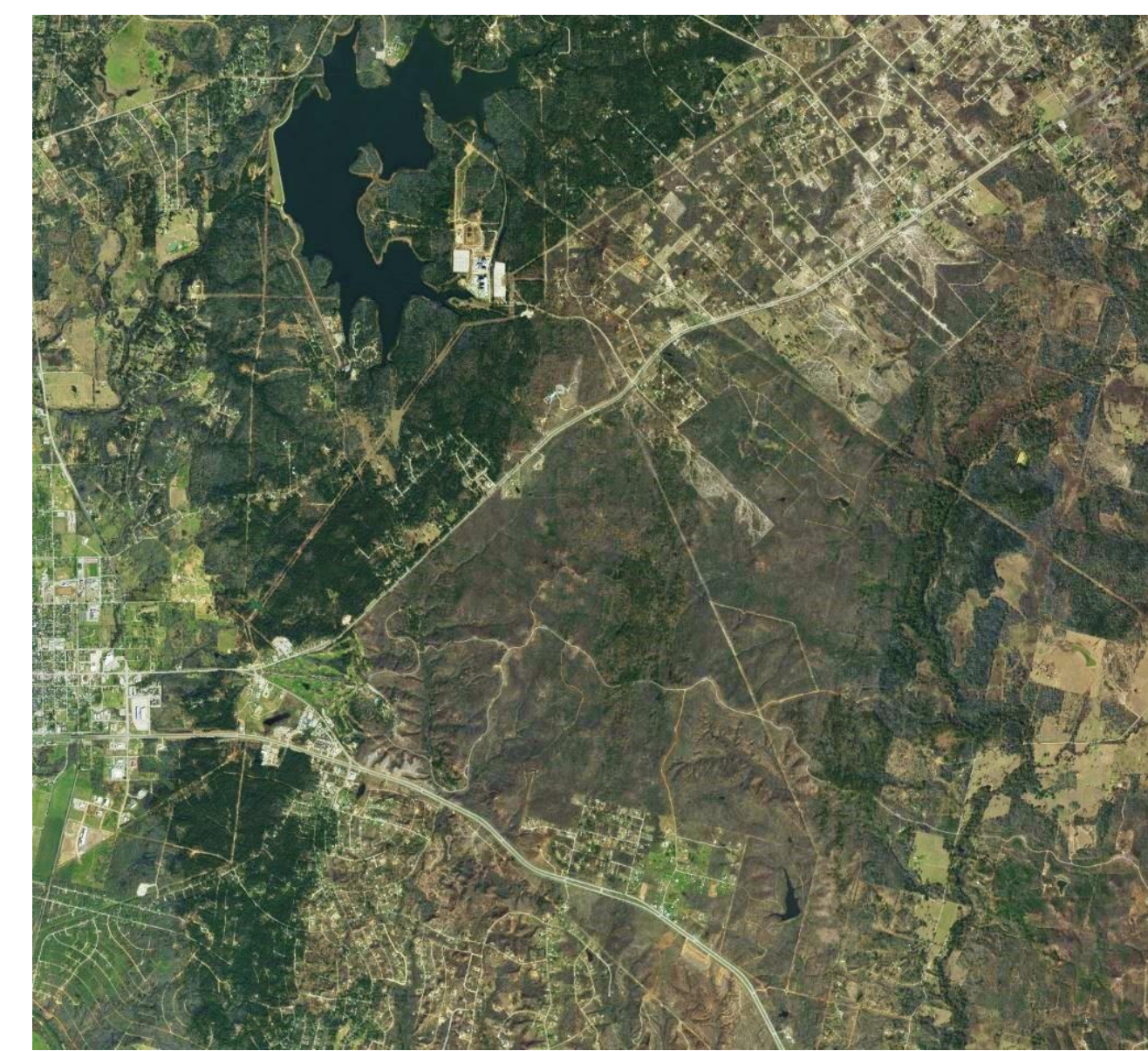
How is Texas Changing?



A _____



B _____



_____ C



_____ D

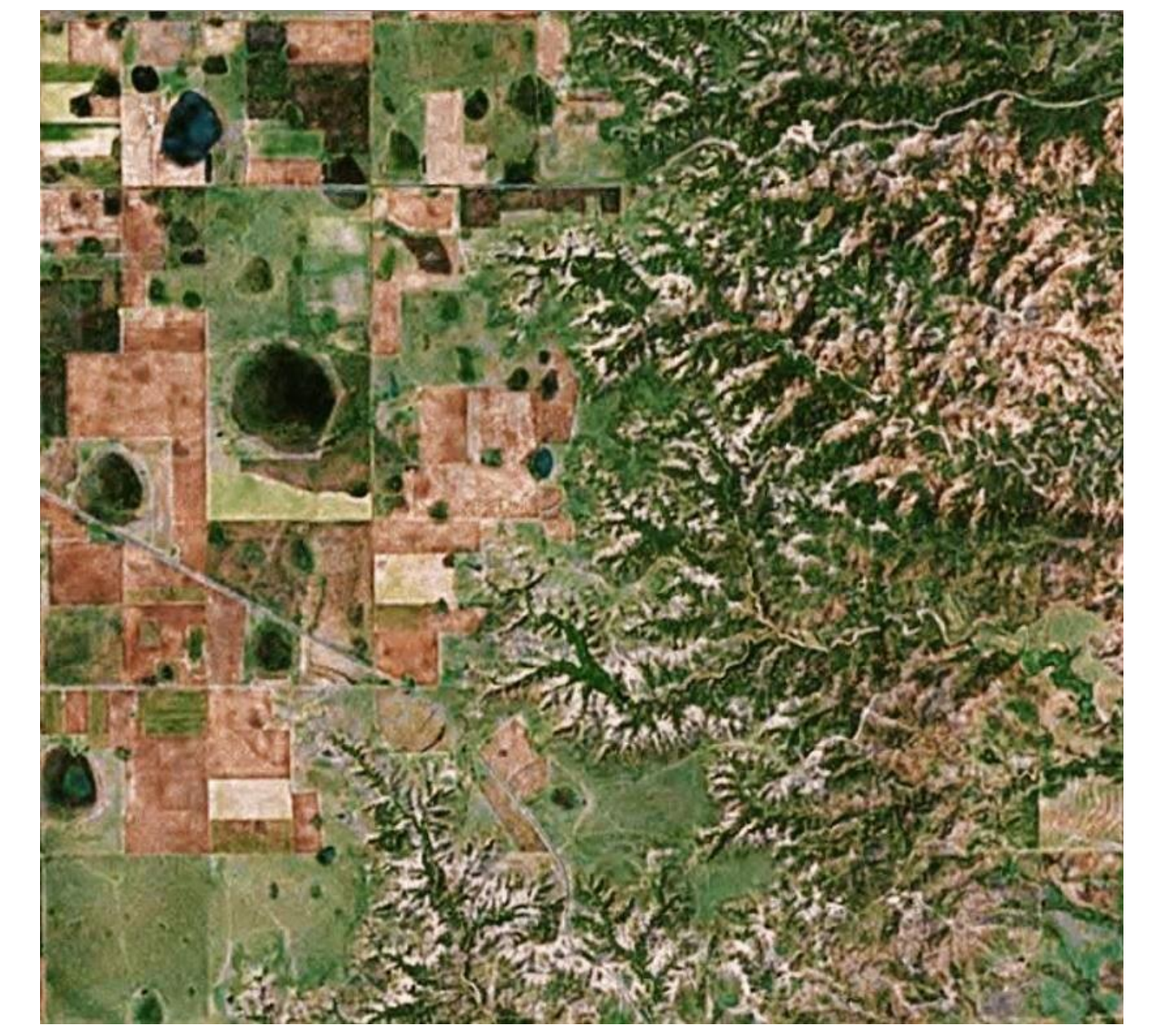


L _____

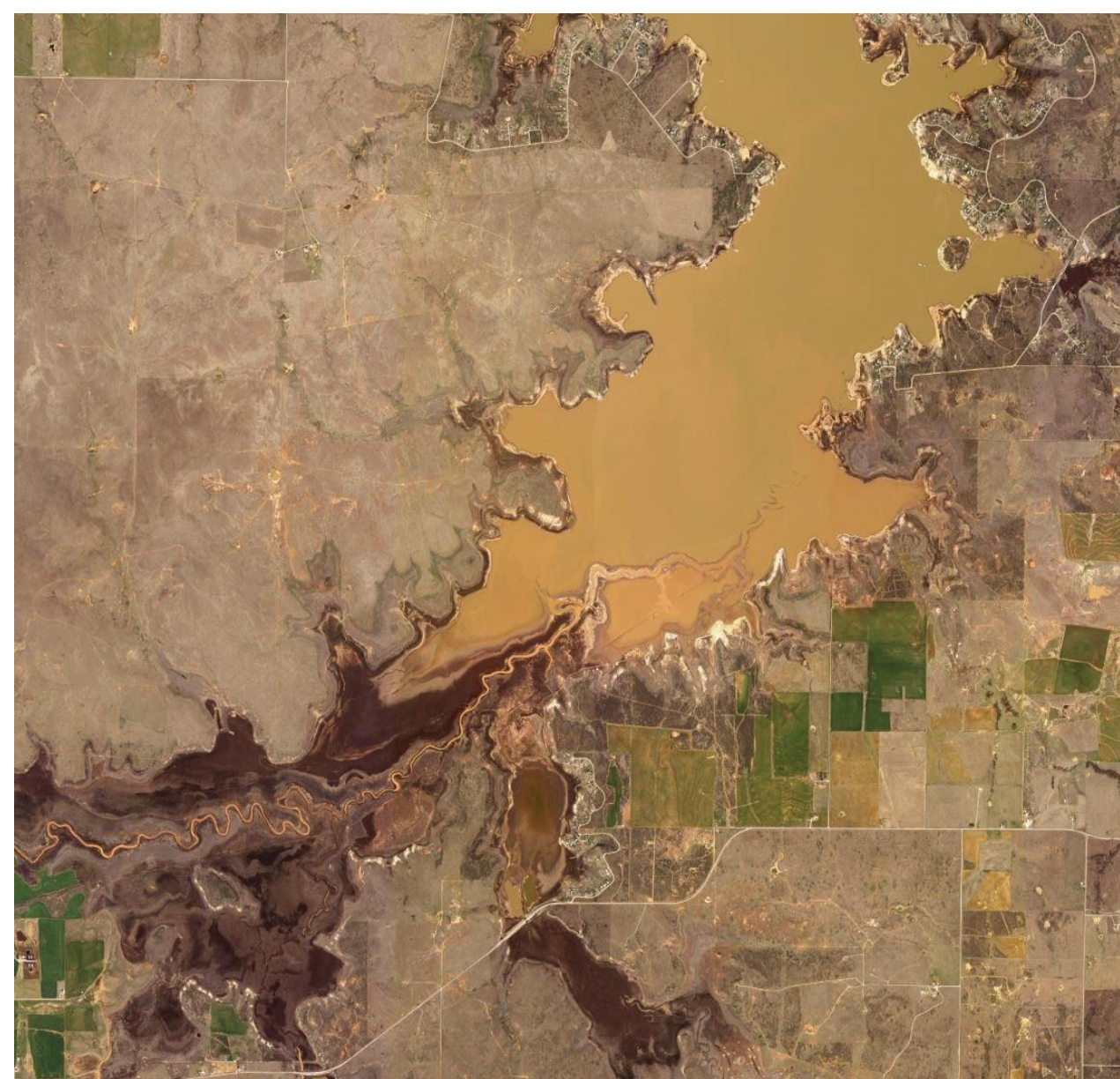
1. A clear blue lake shrinks, and lake bottom sediments are exposed.

3. Where erosion etches a deep canyon into a flat plateau, seasonal rains fill small lakes in farmland.

5. Two streams enter a bay behind a barrier island; their deltas expand and merge.



_____ E



K _____

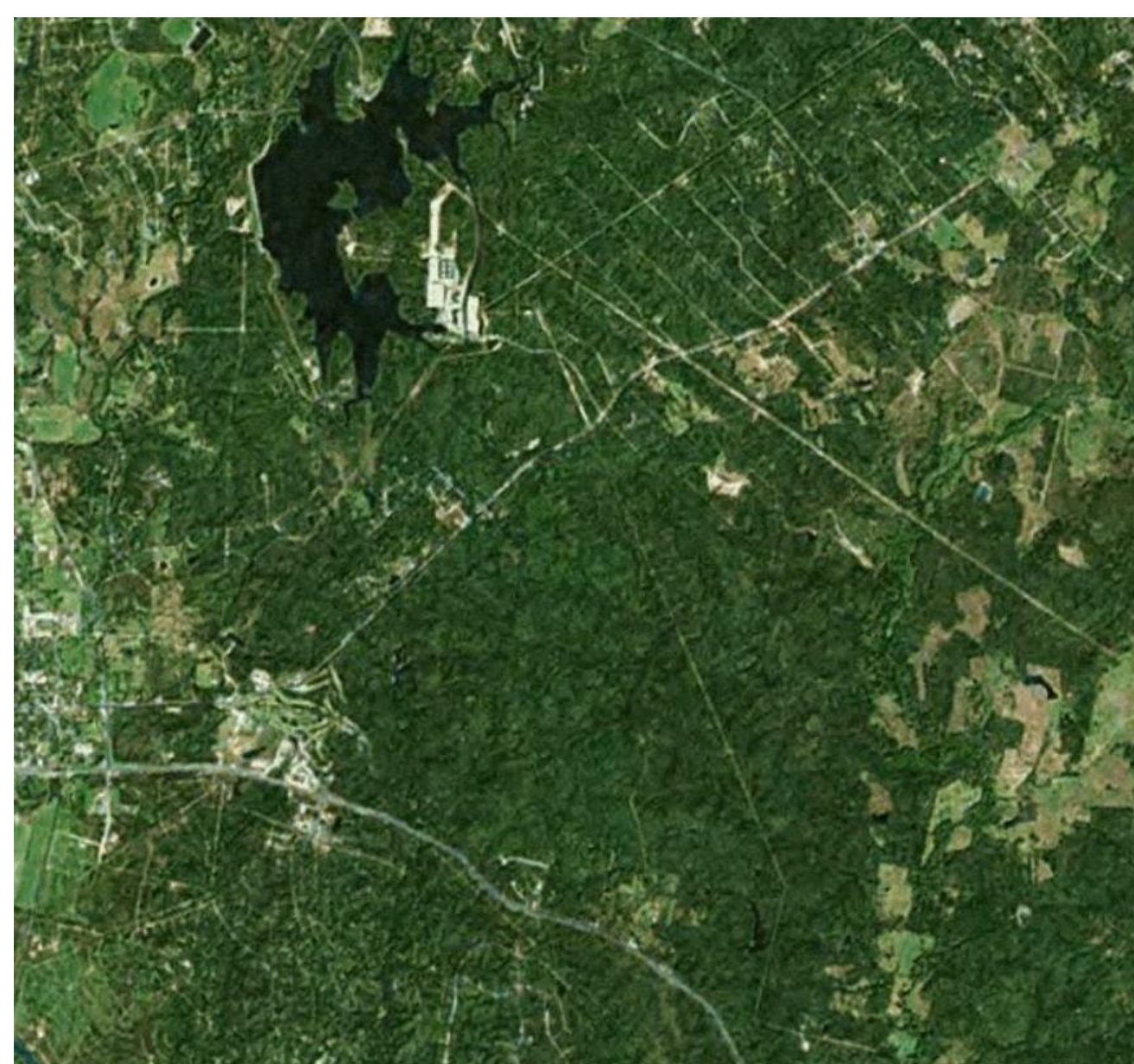
2. Heavy rains raise lake levels to flood numerous islands and fill a lake with sediment.

4. A wildfire burns through forested hills and towns.

6. A wildfire burns through coastal marsh grasslands; a road acted as a firebreak.



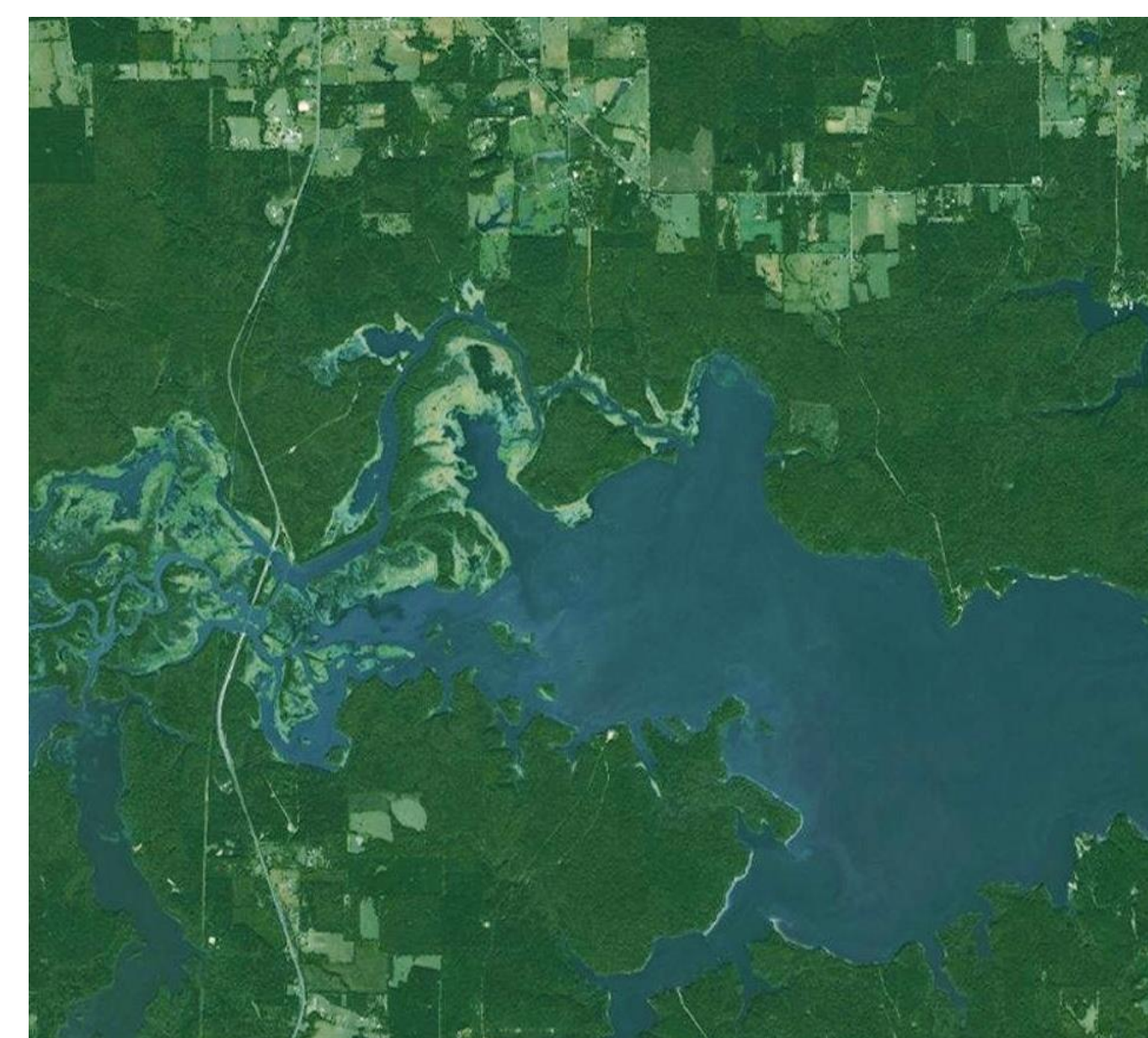
_____ F



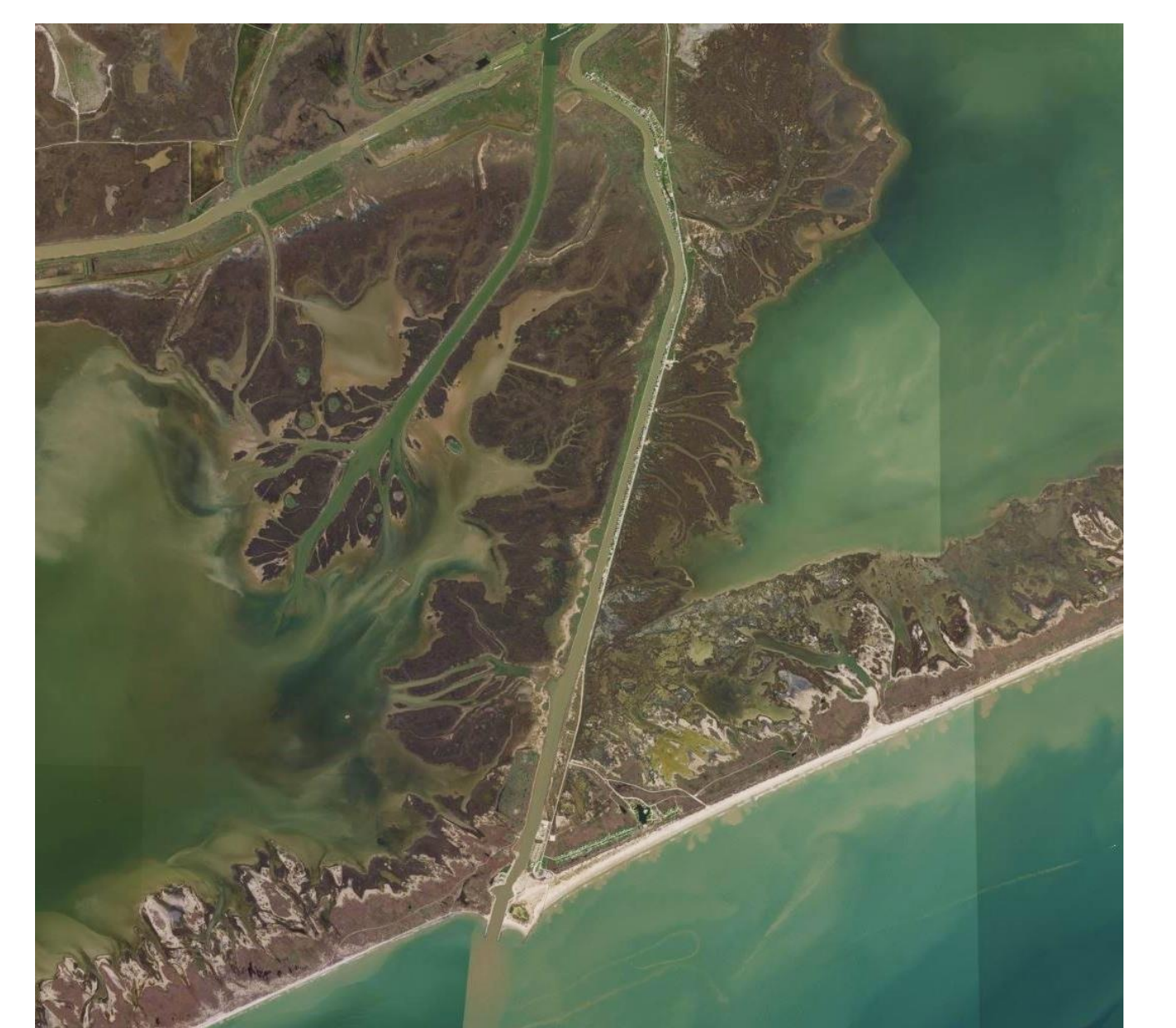
J _____



I _____



_____ H



_____ G

WATCHING OVER TEXAS FROM SPACE

An Earth Observations education resource for grades 4 -12 in support of TEKS covering
Earth Science and Environmental Science Standards

Developed by TexasView with support from Grant Number G14AP00002 from the Department of the
Interior,

3.4.4 HOW IS TEXAS CHANGING? POSTER ACTIVITY

3.4.4.2 NASA EO POSTER ACTIVITY

On the following page, you will find imagery from the NASA Earth Observatory that covers diverse Texas landforms, natural hazards, meteorological events, and human infrastructure. Match images to the descriptions in the exercise. Natural landscape features documented in the imagery include bays, barrier islands, rivers, lakes, mountains, and dune fields. Natural hazard events include flooding, wildfires, and hurricanes.

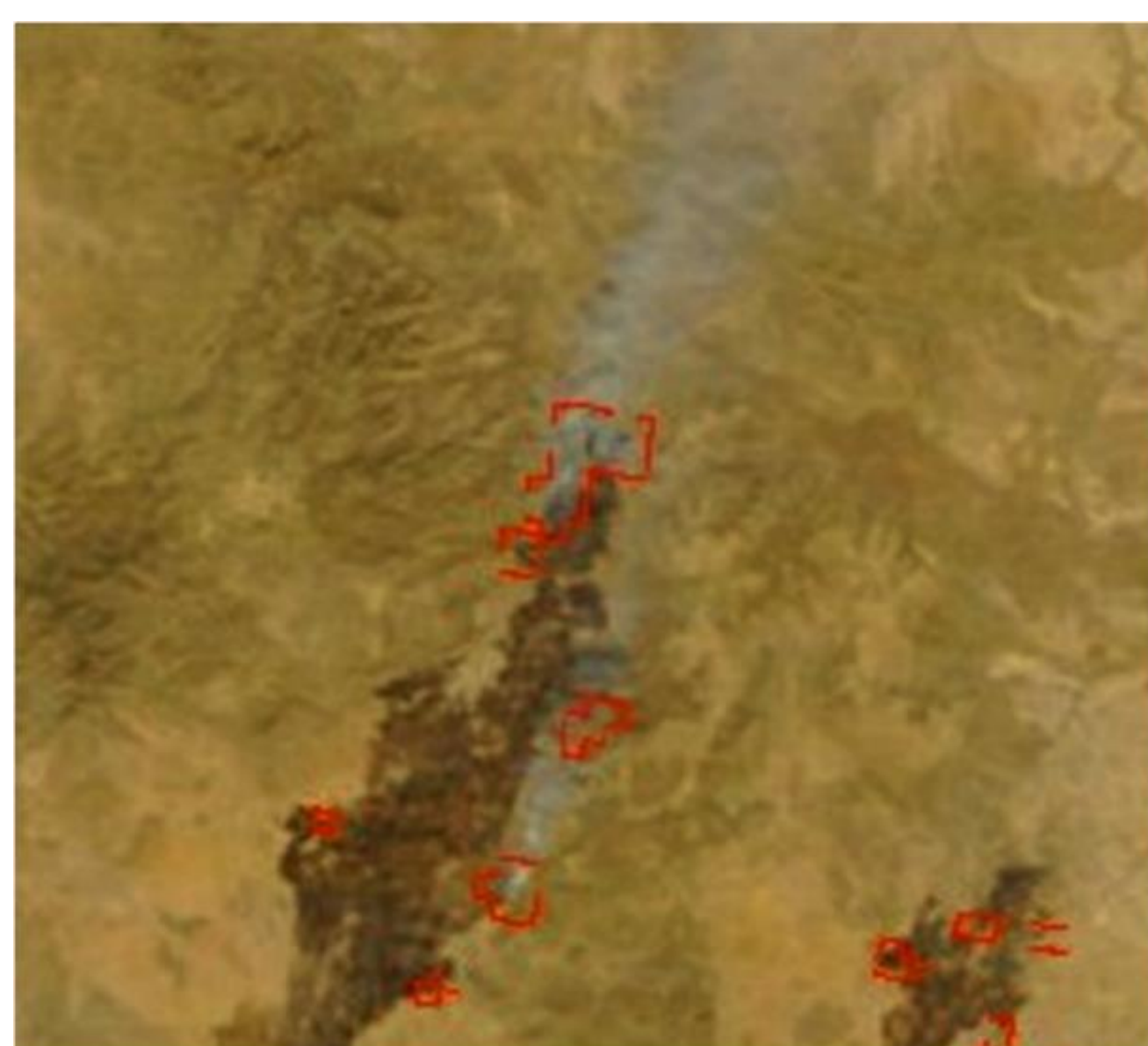
The poster is designed to be printed at 36" X 36" but can be downsized for tabletop use. Students will match images with the descriptions in the center of the poster. Hanging the poster on a magnetic board and providing magnetic numbers works well.

All imagery was captured from the NASA Earth Observatory web site:

[NASA Earth Observatory - Home](#)

See the Imagery Key for NASA Earth Observatory Lessons and Activities for website links.

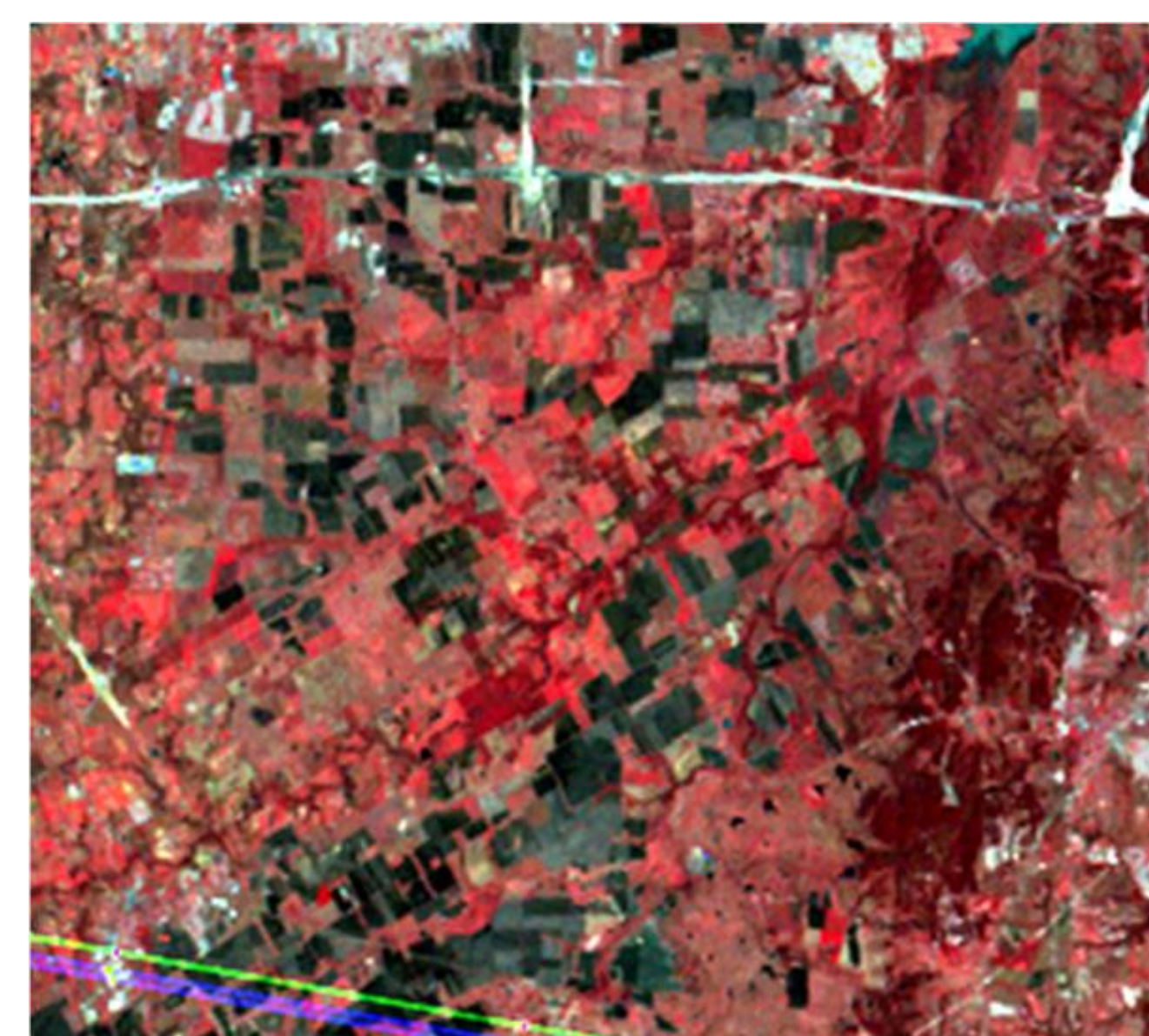
How is Texas Changing?



A _____



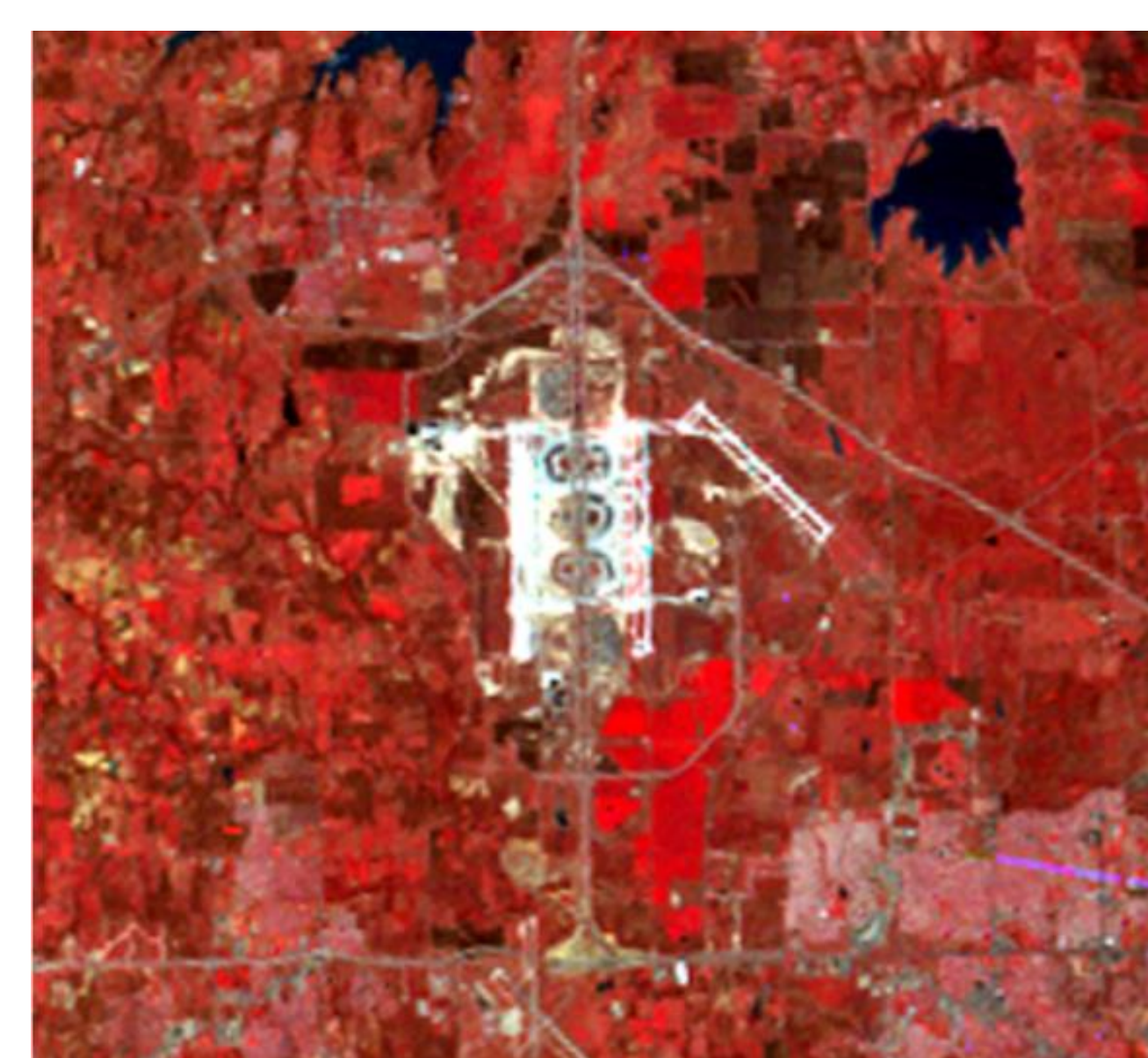
B _____



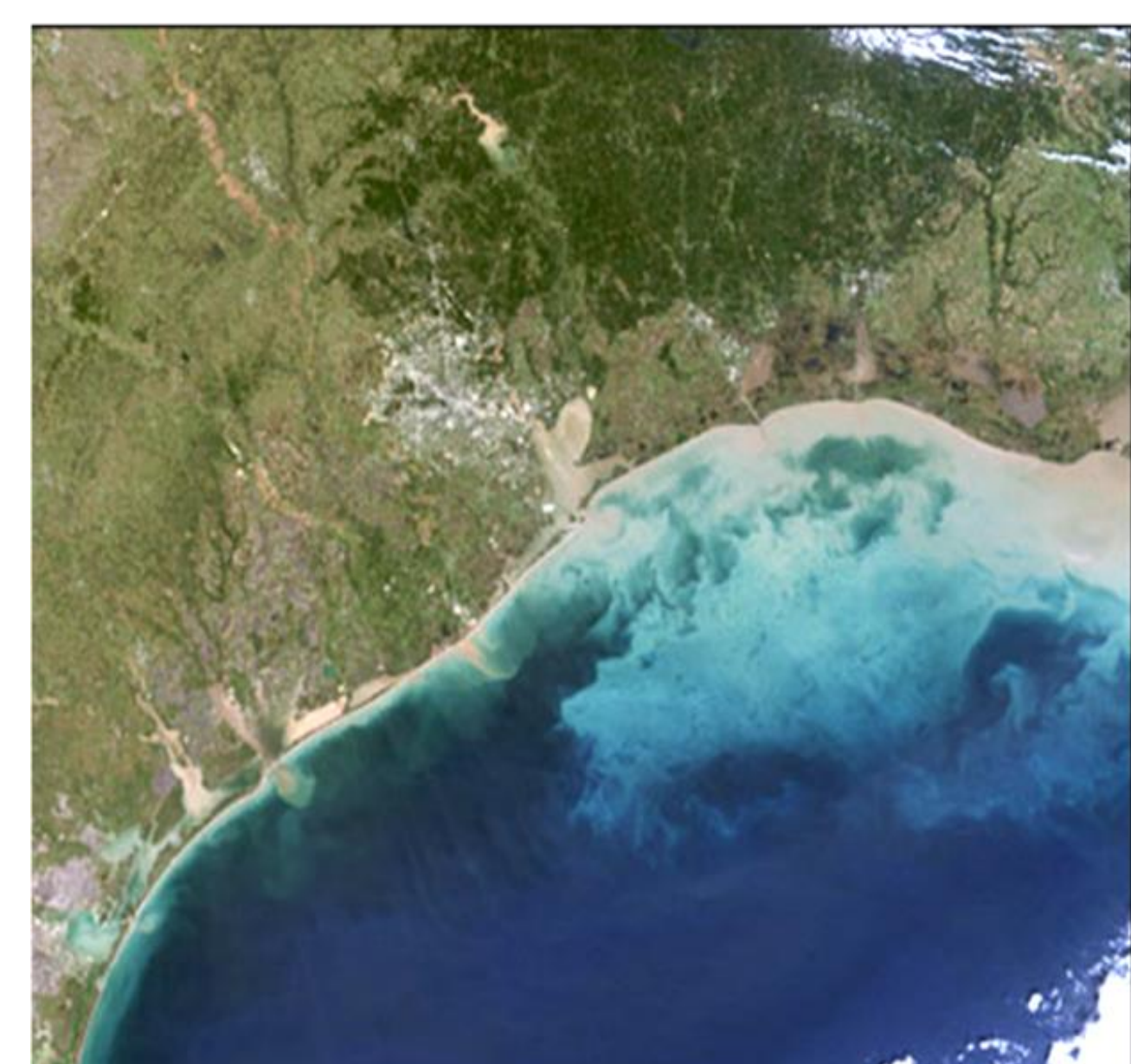
_____ C



_____ D



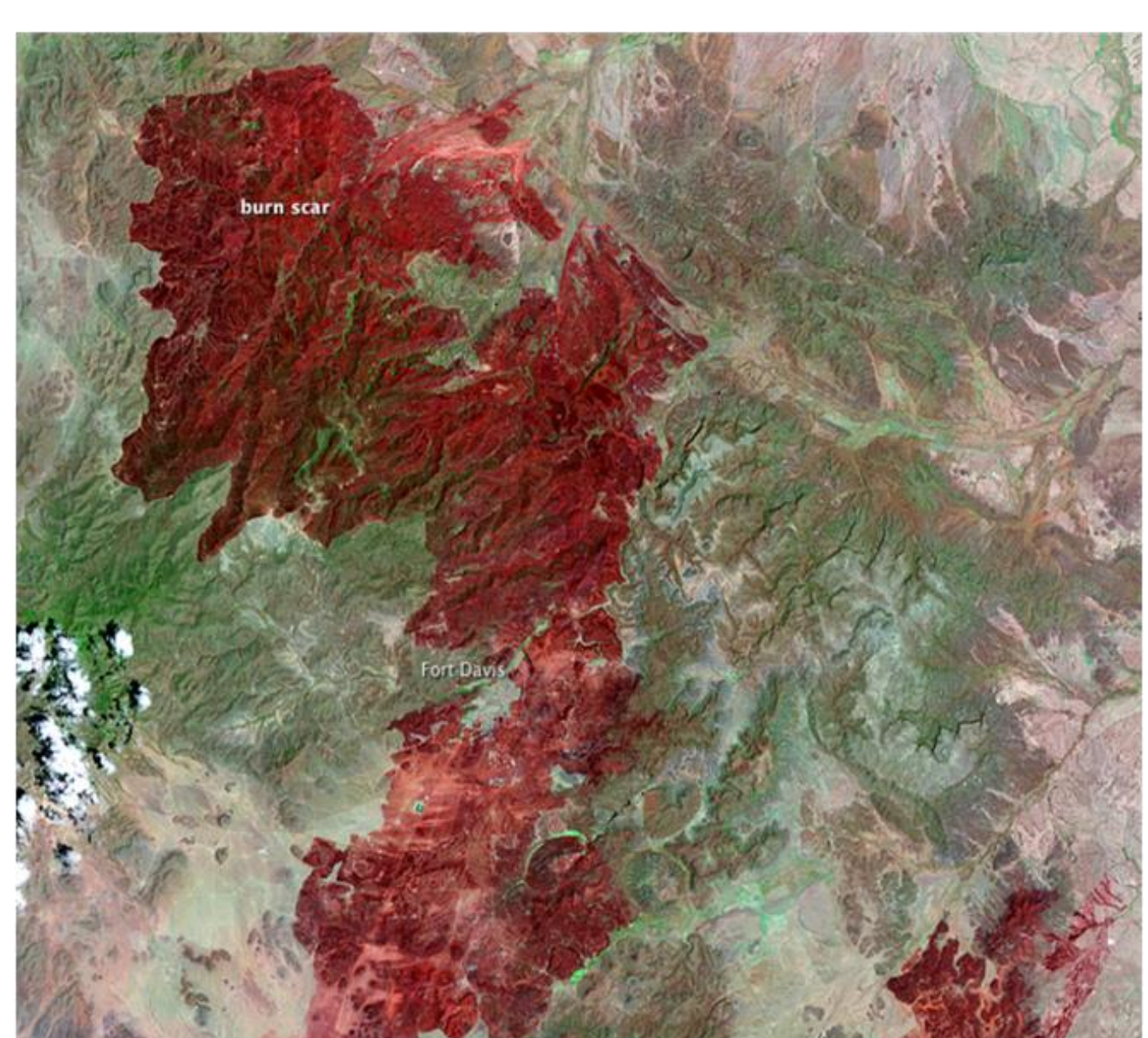
L _____



K _____



J _____



I _____



_____ H

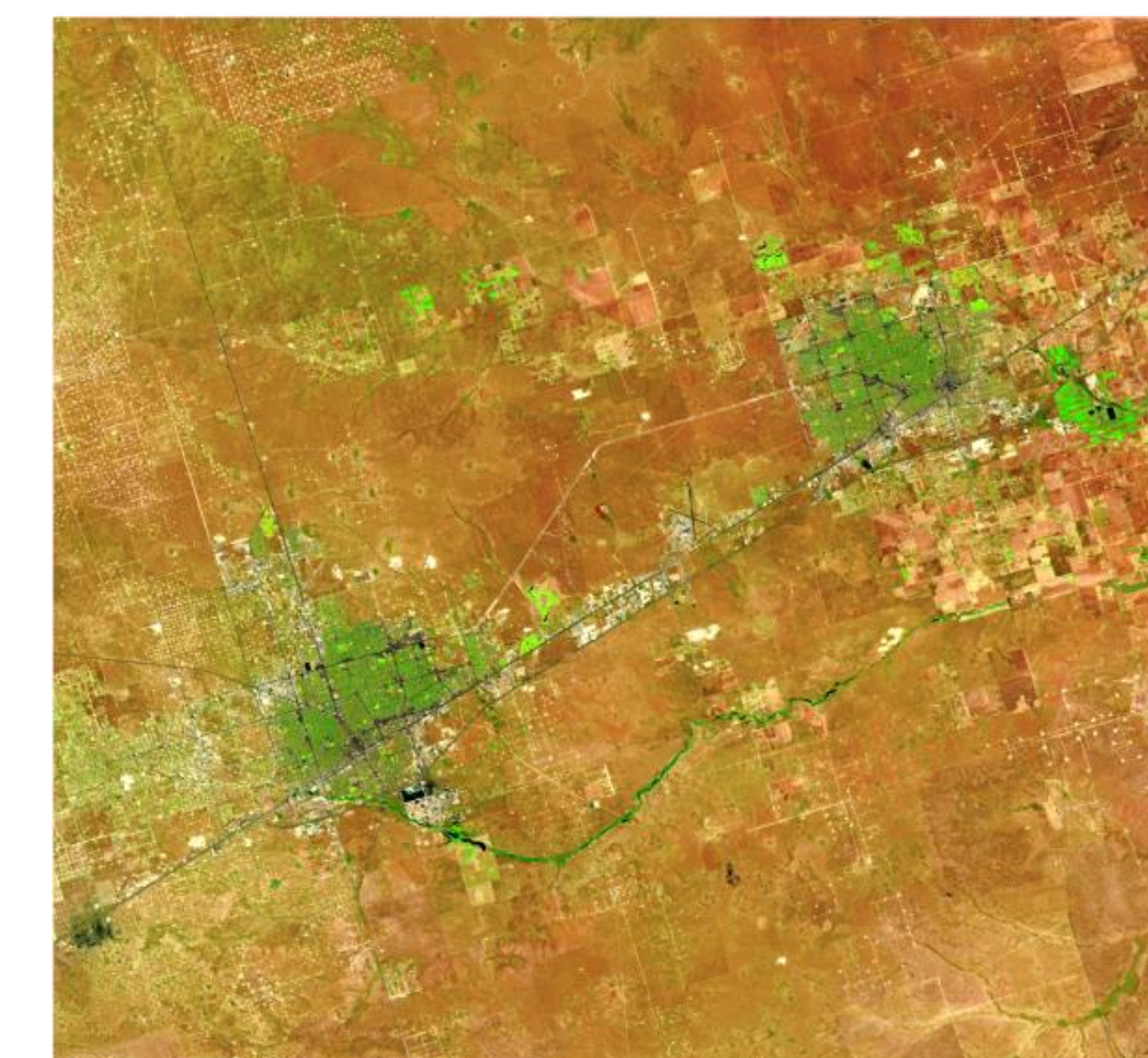


_____ G

1. Farmland is flooded to develop a water reservoir; residential development follows.

3. Oil fields expand surrounding two west Texas arid-region cities.

5. Turbulence & salty storm surge from Hurricane Ike destroy vegetation along Gulf of Mexico coastline.

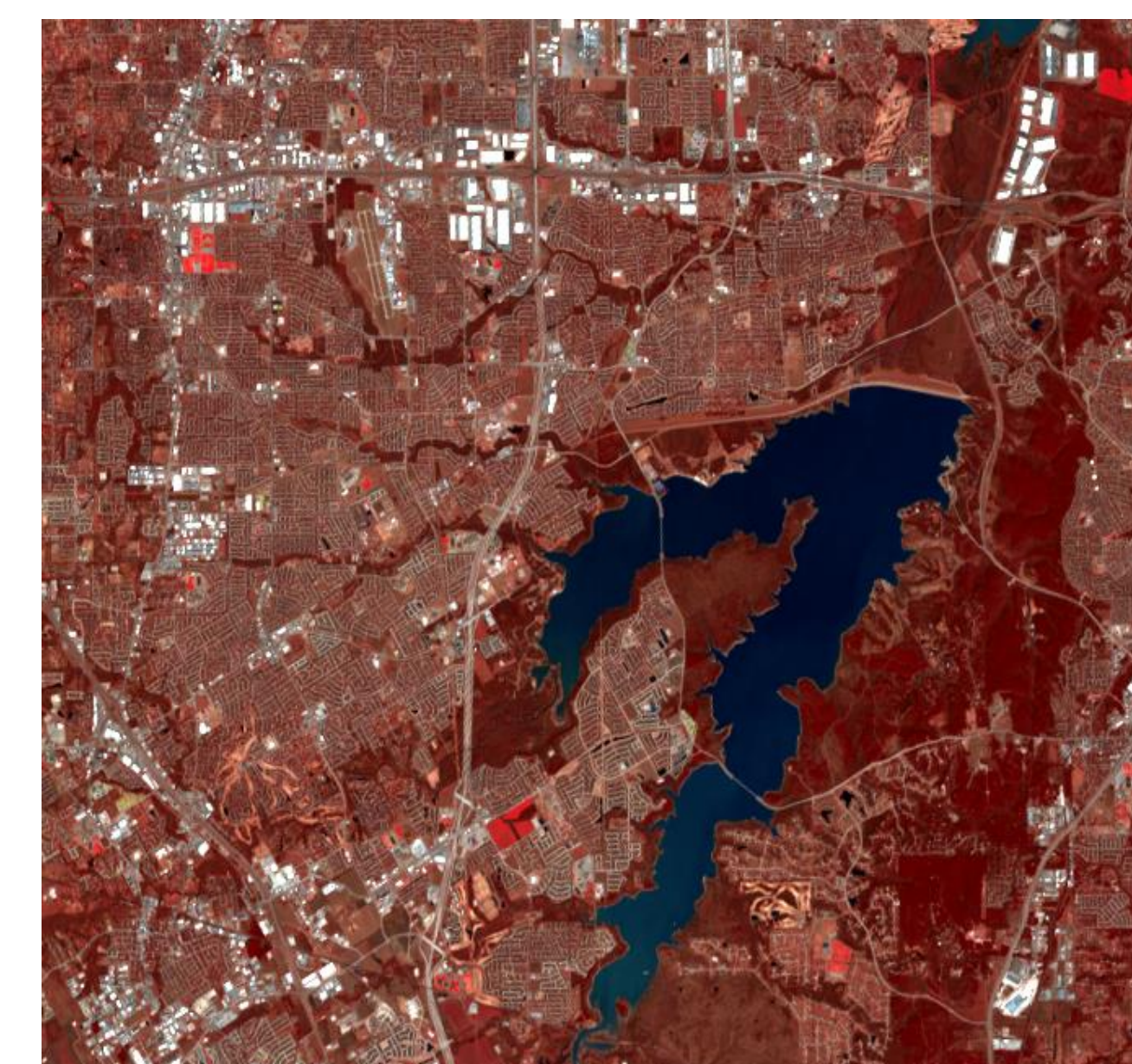


_____ E

2. Airport expands over cropland; residential and industrial development swells around edges.

4. Heavy rains/flooding carry sediment-laden water into coastal bays and the Gulf of Mexico.

6. Wildfire burn in mountainous area expands dramatically and encircles a small city.



_____ F