

WATCHING OVER TEXAS FROM SPACE

An Earth Observations education resource for grades 4 -12 in support of TEKS covering
Earth Science and Environmental Science Standards

Developed by TexasView with support from Grant Number G14AP00002 from the Department of the Interior,

3.4.2 How is Texas Changing Scramble Game

3.4.2.1 HOW IS TEXAS CHANGING

SCRAMBLE GAME TPWD

The "How is Texas Changing?" scramble game is a table-top activity that challenges students to match satellite imagery from different dates and identify changes to the surface features. This game can be played by individuals or in groups. The images and descriptions are scrambled together and placed in the center of the game surface. Students select cards and find the matching descriptions of images. This game is suitable for grade 4 - 12, but probably more suitable for younger students.

The images and description cards on the following pages are designed to be printed one-sided. Laminating the pages before separating the individual images and descriptions is highly recommended.

All imagery was captured from the Texas Watershed Viewer. See the How is Texas Changing Imagery Key for those links.

**A clear blue lake shrinks,
and lake bottom is
exposed.**

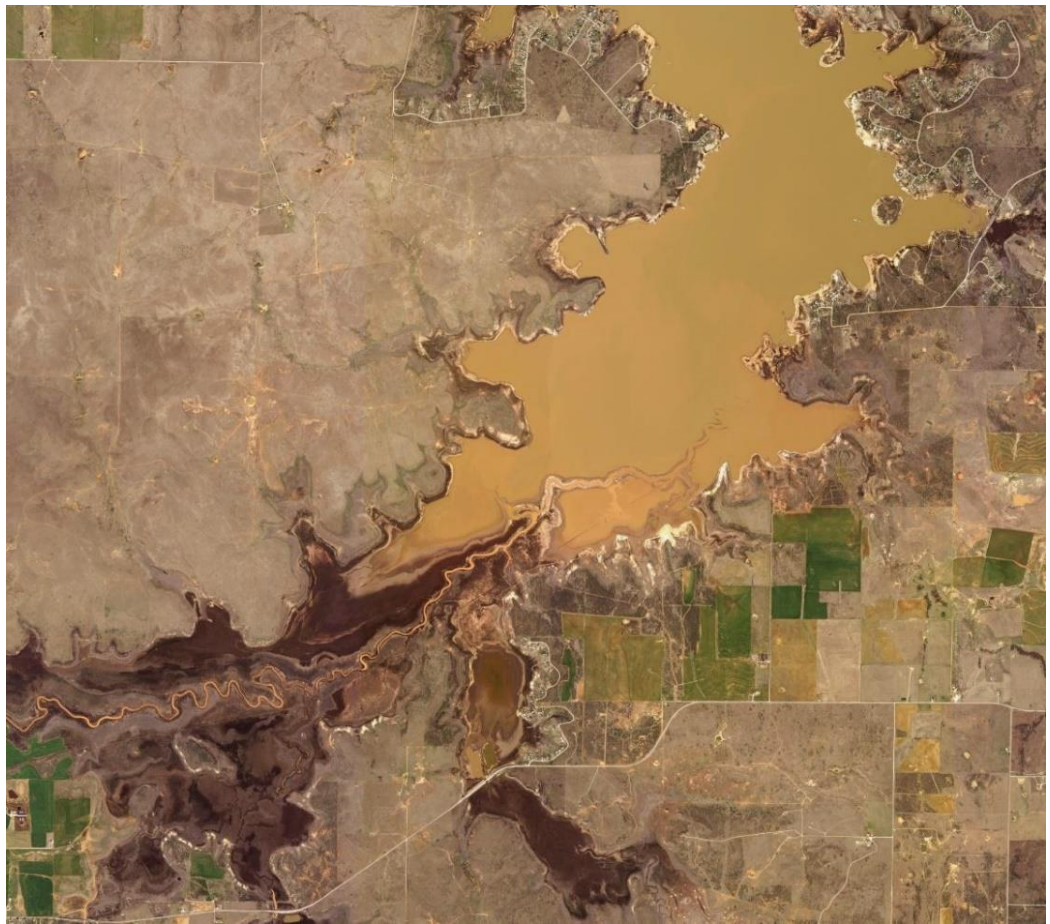
**Heavy rains raise lake
levels to flood numerous
islands and fill a lake with
sediment.**

Where erosion etches a deep canyon into a flat plateau, rains fill small lakes in farmland.

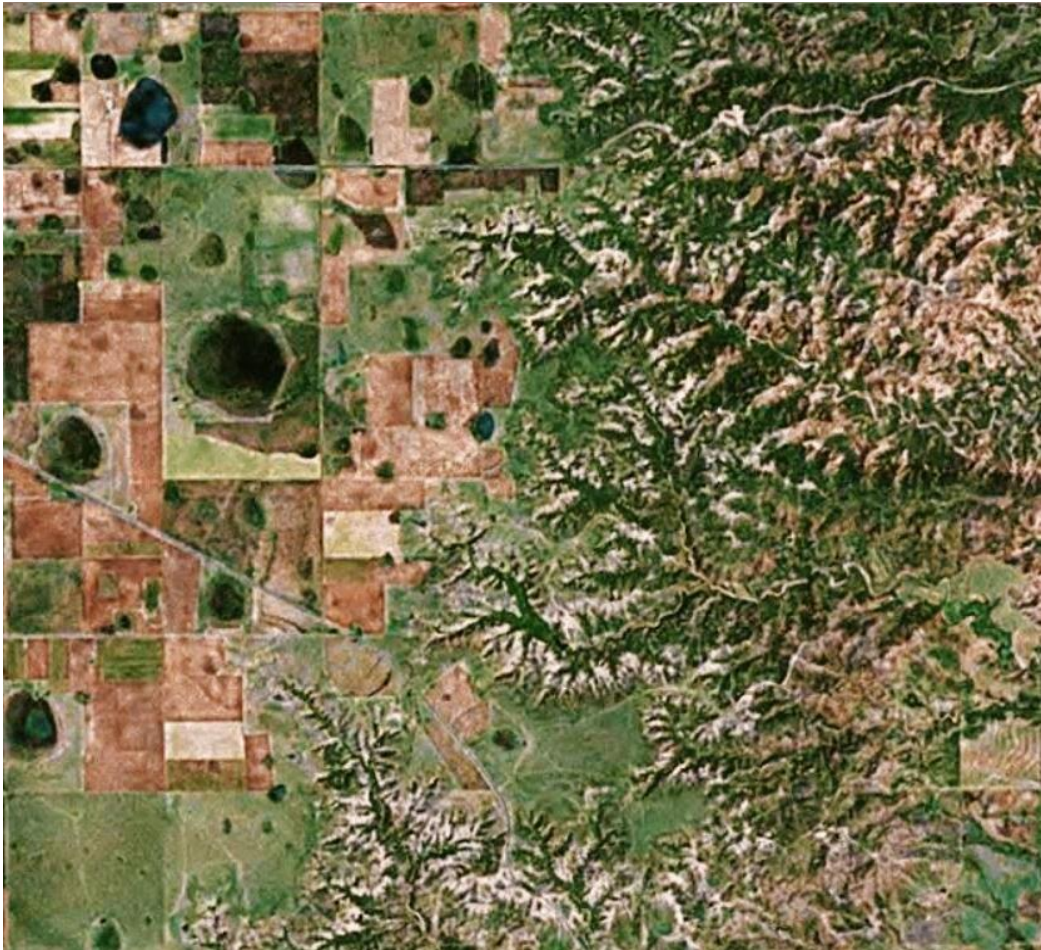
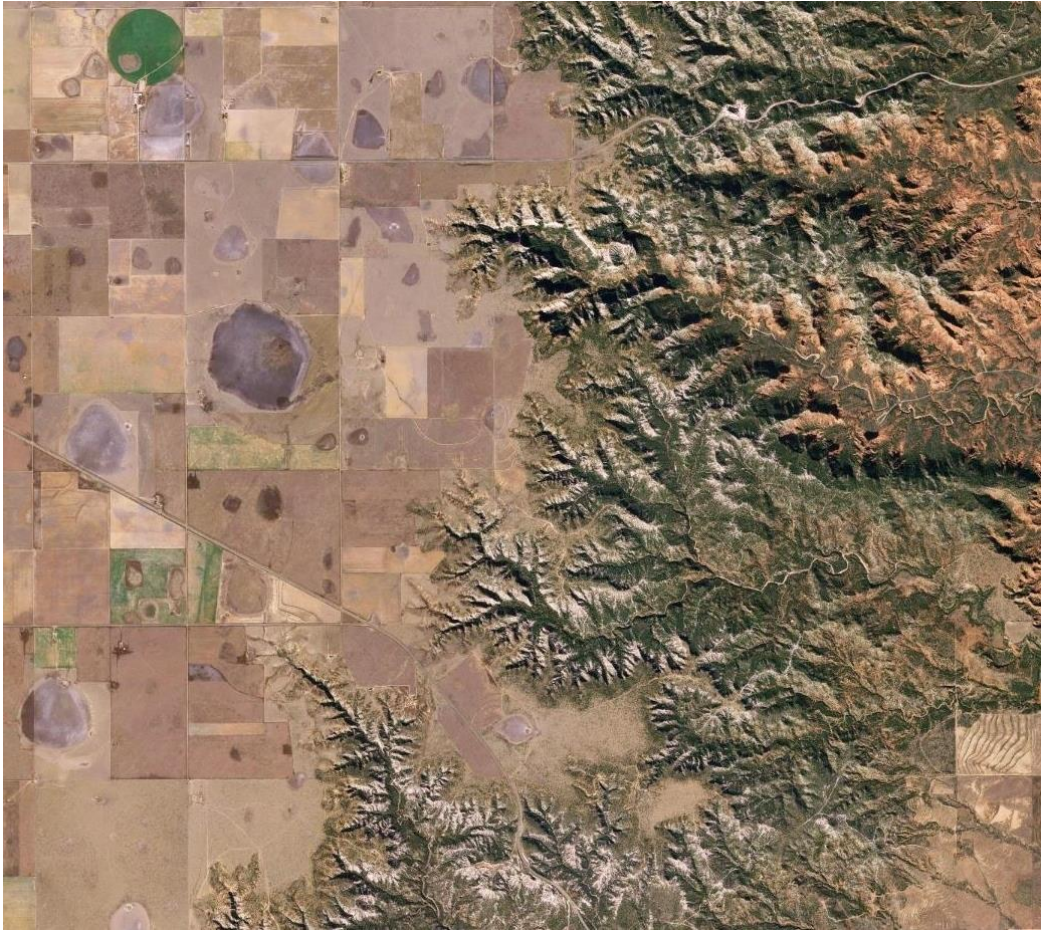
A wildfire burns through coastal marsh grasslands; a road acted as a firebreak.

**A river enters and bay
behind a barrier island and
its delta expands.**

**A wildfire burns through
wooded hills and towns.**

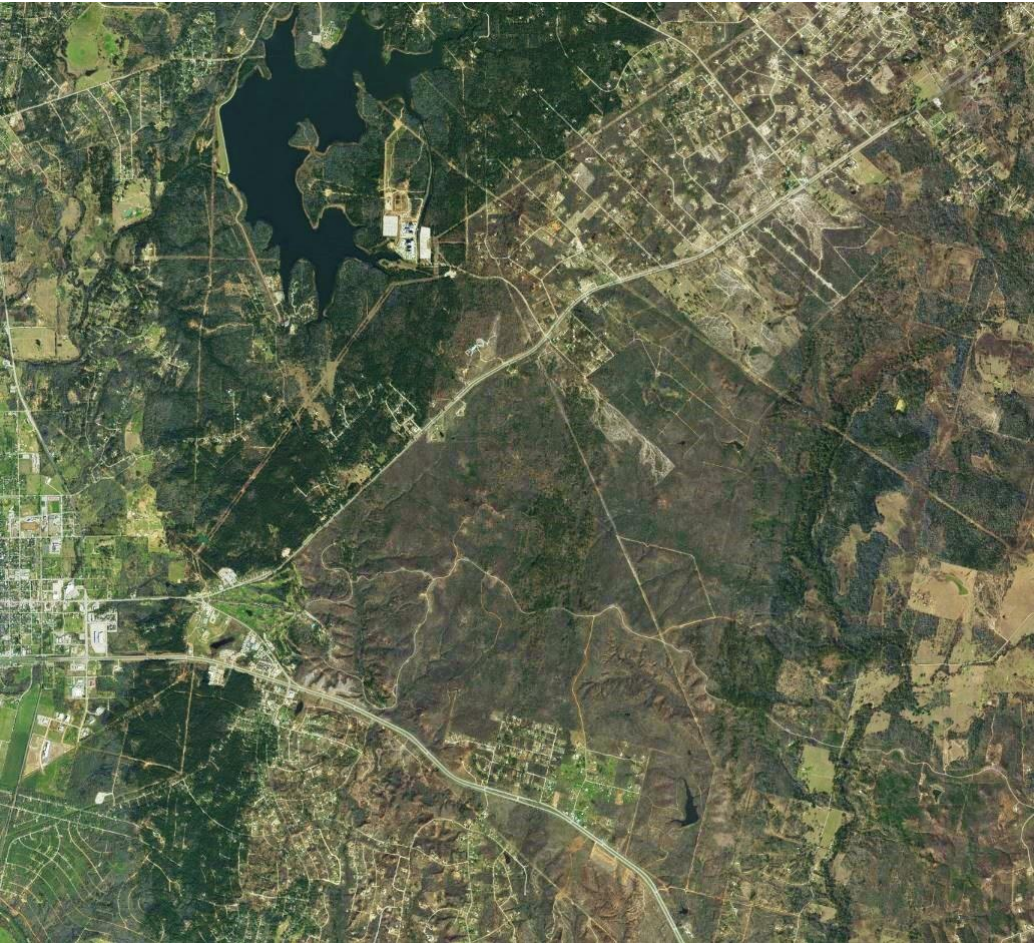












WATCHING OVER TEXAS FROM SPACE

An Earth Observations education resource for grades 4 -12 in support of TEKS covering
Earth Science and Environmental Science Standards

Developed by TexasView with support from Grant Number G14AP00002 from the Department of the Interior,

3.4.2.2 HOW IS TEXAS CHANGING SCRAMBLE GAME

NASA EO USGS ES

The "How is Texas Changing?" scramble game is a table-top activity that challenges students to match satellite imagery from different dates and identify changes to the surface features. This game can be played by individuals or in groups. The images and descriptions are scrambled together and placed in the center of the game surface. Students select cards and find the matching descriptions of images. This game is suitable for grade 4 - 12, but probably more suitable for younger students.

The images and description cards on the following pages are designed to be printed one-sided. Laminating the pages before separating the individual images and descriptions is highly recommended.

All imagery was captured from the NASA Earth Observatory and the USGS Earthshots. Imagery Key for those links. See the How is Texas Changing Imagery Key for those links.

**Wildfire burn in
mountainous area expands
dramatically and
encircles a small city.**

**Turbulence & salty storm
surge from Hurricane Ike
destroy vegetation along
Gulf of Mexico coastline.**

Farmland is flooded to develop a water reservoir; residential, municipal, and industrial development follows.

Airport expands over cropland, and residential and industrial development swells.

Heavy rains/flooding carry sediment-laden water into coastal bays and the Gulf of Mexico.

Oil fields expand surrounding two west Texas arid-region cities.

