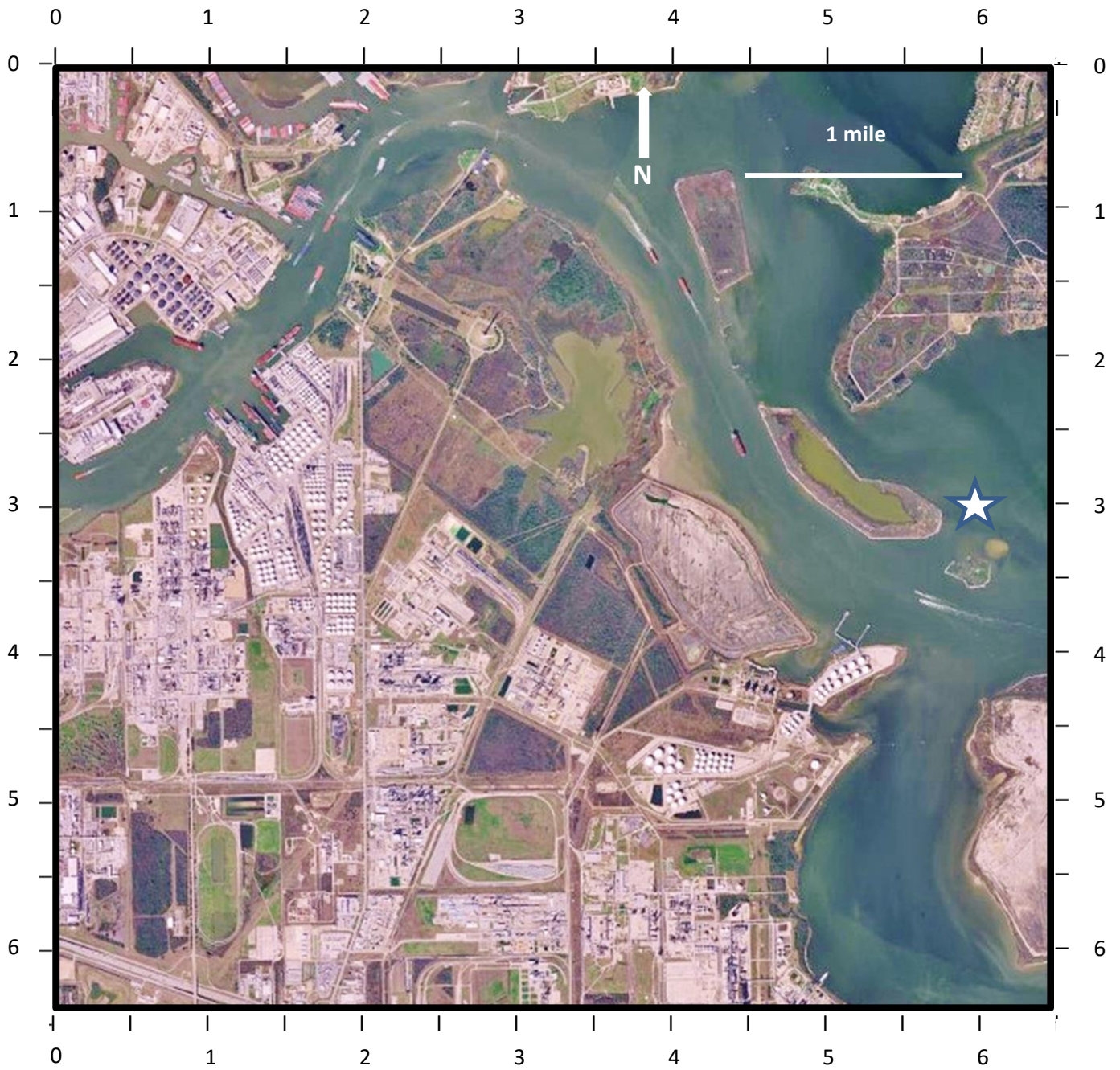




# FIND IT! Houston Ship Channel, Texas



## EXERCISE (locate the described features)

1. **At the end of a north-northeast trending, 1-mile-long road, a circular road surrounds a tall white object that casts a northeast-trending shadow.**
  - a. 2.7, 1.7
  - b. 1.6, 3.0
  - c. 1.2, 2.6
  - d. 1.5, 3.9
2. **Several red ships are docked along the waterfront of a northeast-trending channel.**
  - a. 4.0, 0.2
  - b. 1.2, 2.0
  - c. 6.4, 4.9
  - d. 3.5, 3.5
3. **14 round, white objects (8 large; 6 small) cluster together on a northeast-trending peninsula extending into the bay.**
  - a. 6.4, 5.2
  - b. 1.4, 1.2
  - c. 3.3, 4.3
  - d. 5.2, 4.0
4. **Two moving red ships with white wakes (northwest-trending white streaks) converge west of a north- northwest-trending island.**
  - a. 3.5, 4.2
  - b. 4.0, 1.3
  - c. 3.3, 2.0
  - d. 4.0, 1.7
5. **An oval feature (north-south long-axis length ½ mile) to the east of a wooded area (dark green on the image) is centered at \_\_\_\_\_.**
  - a. 0.5, 0.1
  - b. 3.2, 4.2
  - c. 2.2, 6.0
  - d. 1.1, 5.5

Source: Texas Watershed Viewer.

<https://tpwd.maps.arcgis.com/apps/Viewer/index.html?appid=2b3604bf9ced441a98c500763b8b1048>, accessed January 20, 2017. Search key words San Jacinto State Park.