

# WATCHING OVER TEXAS FROM SPACE

An Earth Observations education resource for grades 4 -12 in support of TEKS covering  
Earth Science and Environmental Science Standards

Developed by TexasView with support from Grant Number G14AP00002 from the  
Department of the Interior,  
United States Geological Survey to AmericaView

## 3.1.5 WHICH IS WHICH? Different Perspectives Matching Game Quiz

This matching game asks students to match a photograph taken from  
ground level with a satellite image.

Two choices are offered.

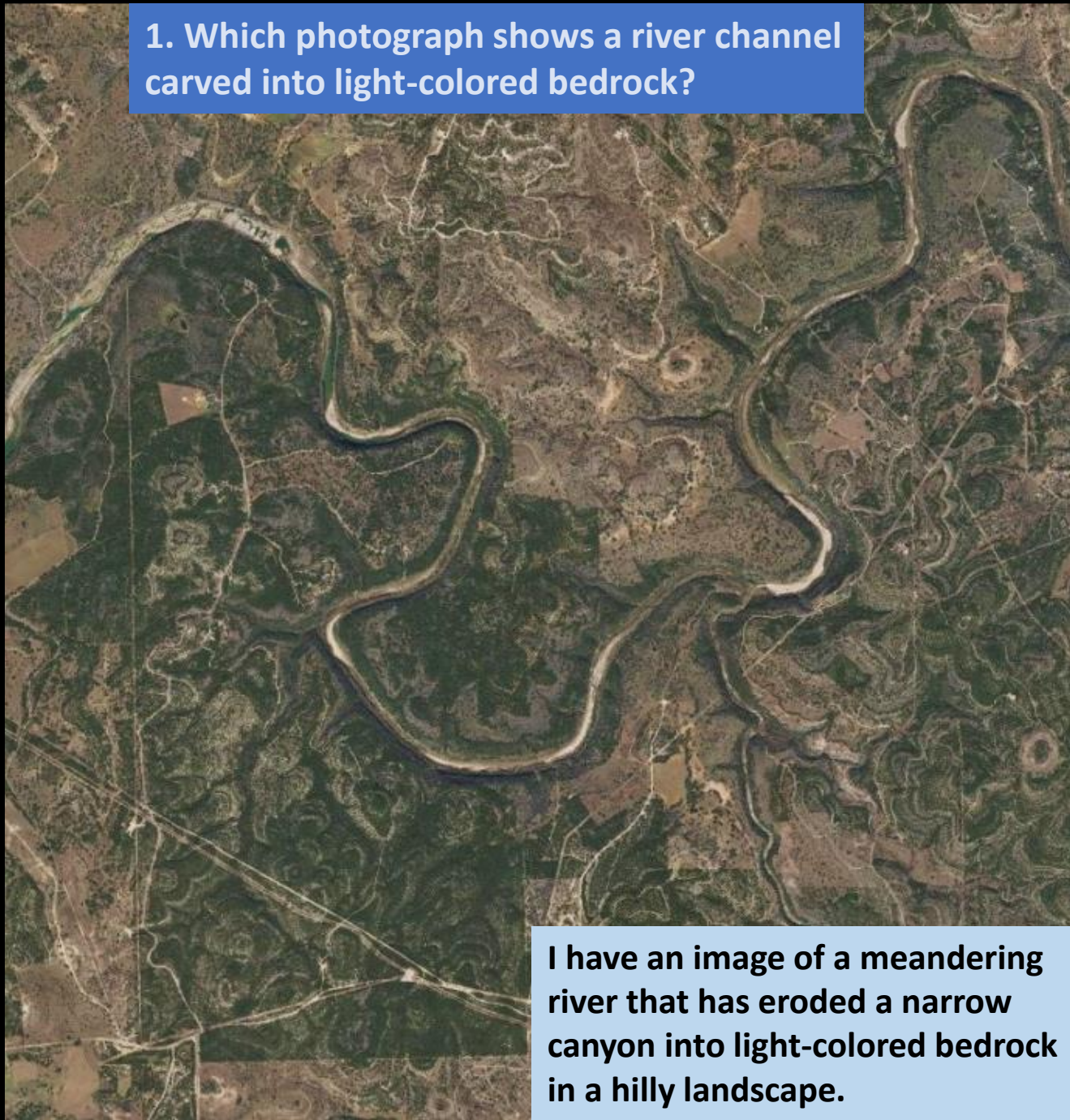
All imagery was captured from the Texas Watershed Viewer:

[https://tpwd.maps.arcgis.com/apps/Viewer/index.html?appid=2b3604bf9ced  
441a98c500763b8b1048](https://tpwd.maps.arcgis.com/apps/Viewer/index.html?appid=2b3604bf9ced441a98c500763b8b1048)

All photographs captured from Texas State Park websites (see the Which is  
Which imagery key for those links).



1. Which photograph shows a river channel carved into light-colored bedrock?

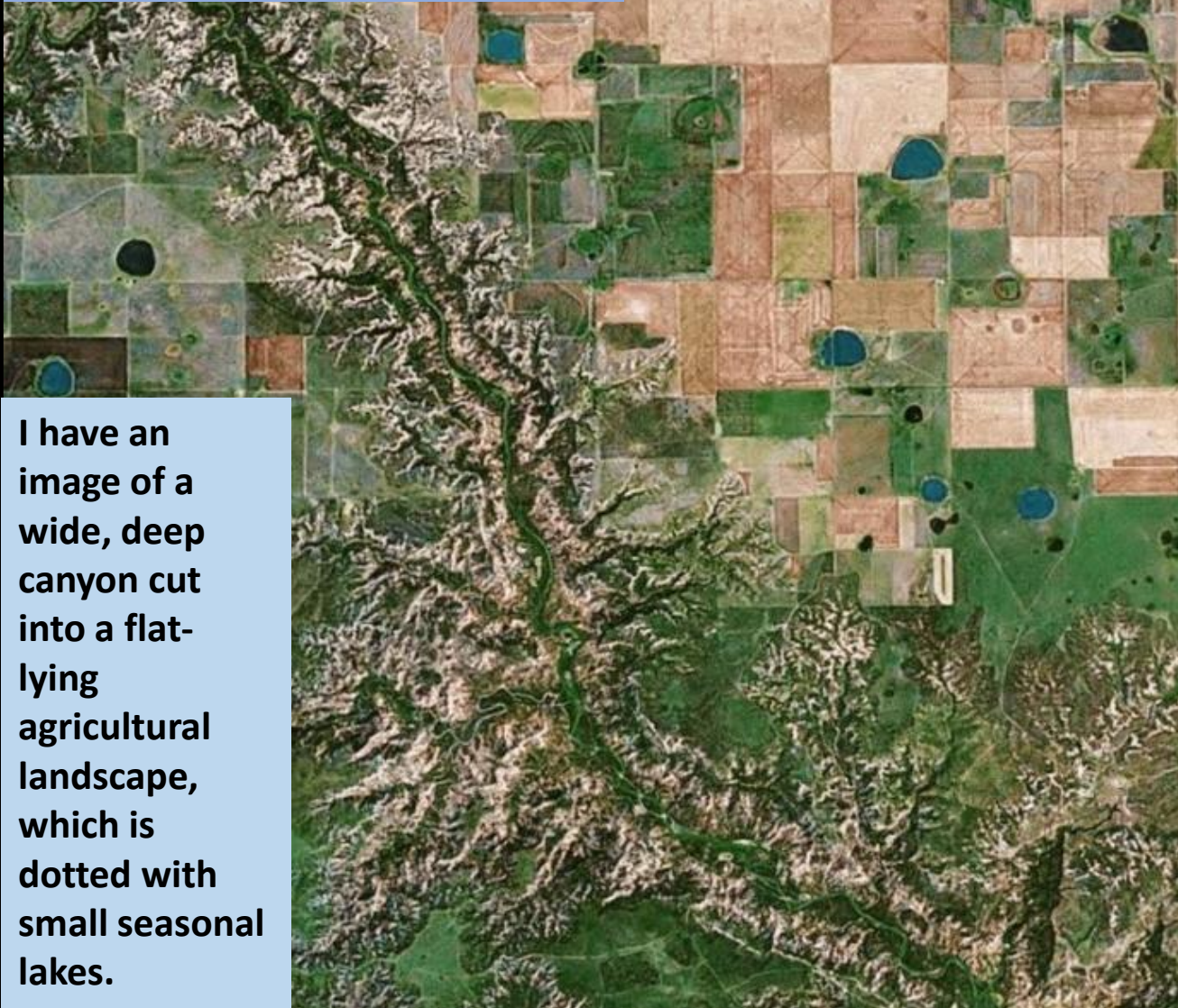


I have an image of a meandering river that has eroded a narrow canyon into light-colored bedrock in a hilly landscape.





2. Which photograph was taken from the inside of a deep canyon cut into a flat-lying plateau?



I have an image of a wide, deep canyon cut into a flat-lying agricultural landscape, which is dotted with small seasonal lakes.

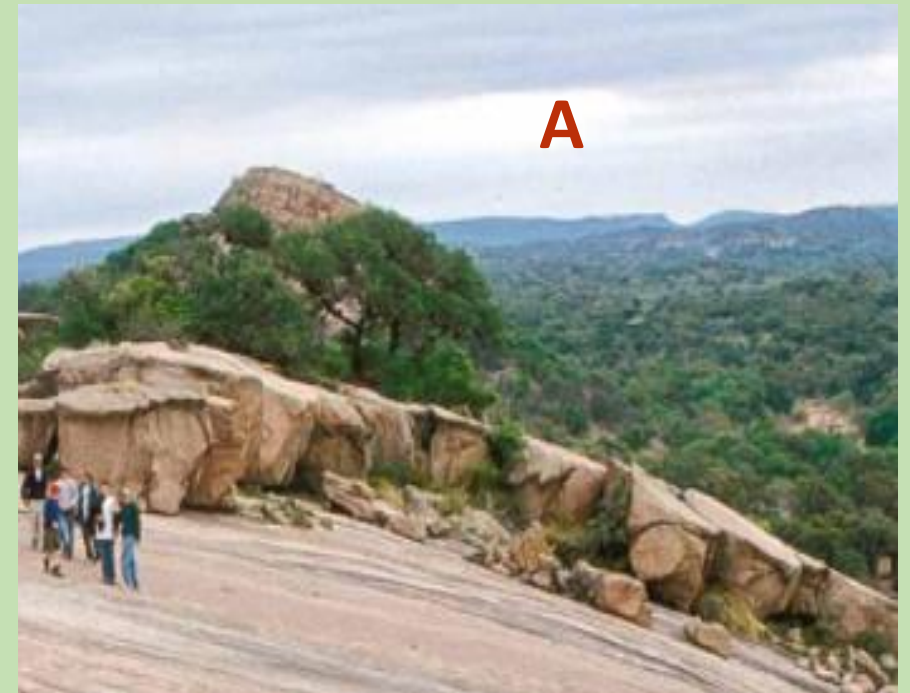




3. Which photograph shows a bare granite hill showing exfoliation of large boulders along surface-parallel fractures?



I have an image of an oval mountain bare of vegetation that rises above a sparsely forested landscape.





4. Which photograph shows a narrow bay between a barrier island and the mainland, where fishing prospects look good?



I have an image of three rivers entering an east-west trending bay that joins a narrow bay behind a barrier island.





5. Which photograph shows a barrier-island dune field looking towards the beach and surf?

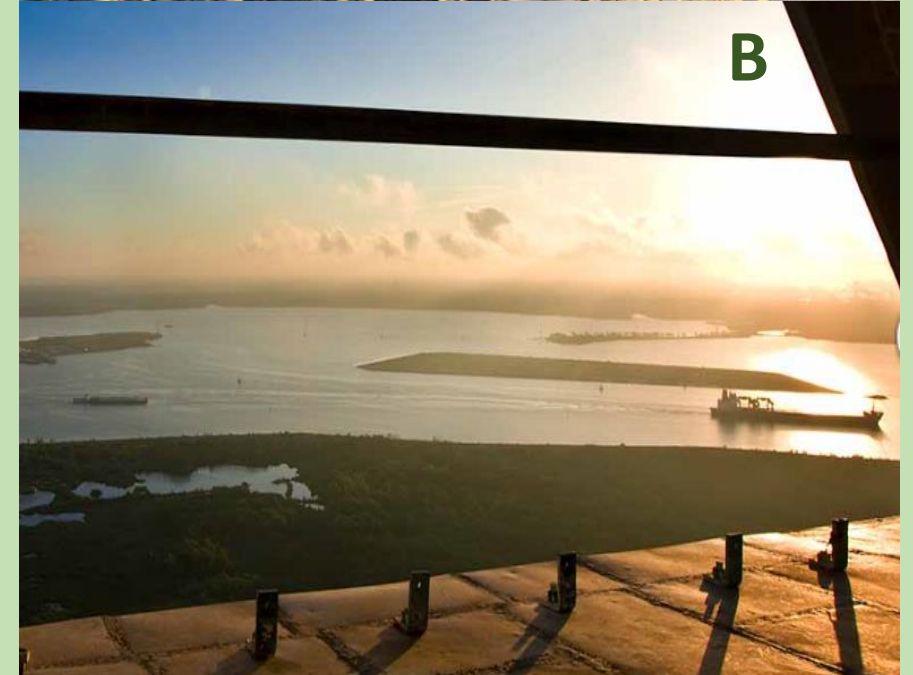


I have an image of a northeast-trending, sandy barrier island enclosing a large bay, which has a bridge on its northwest side.

A

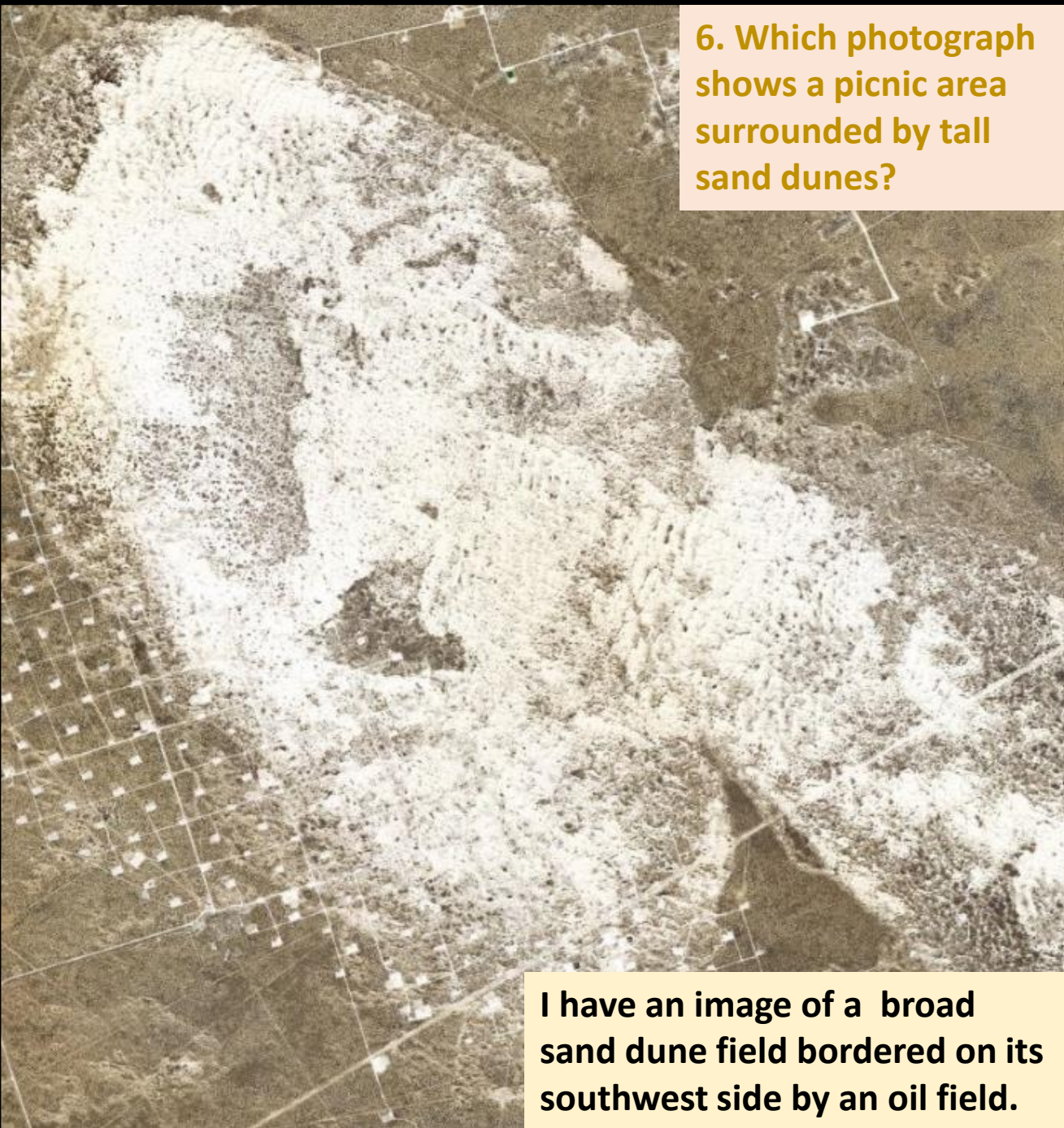


B





6. Which photograph shows a picnic area surrounded by tall sand dunes?



I have an image of a broad sand dune field bordered on its southwest side by an oil field.

A

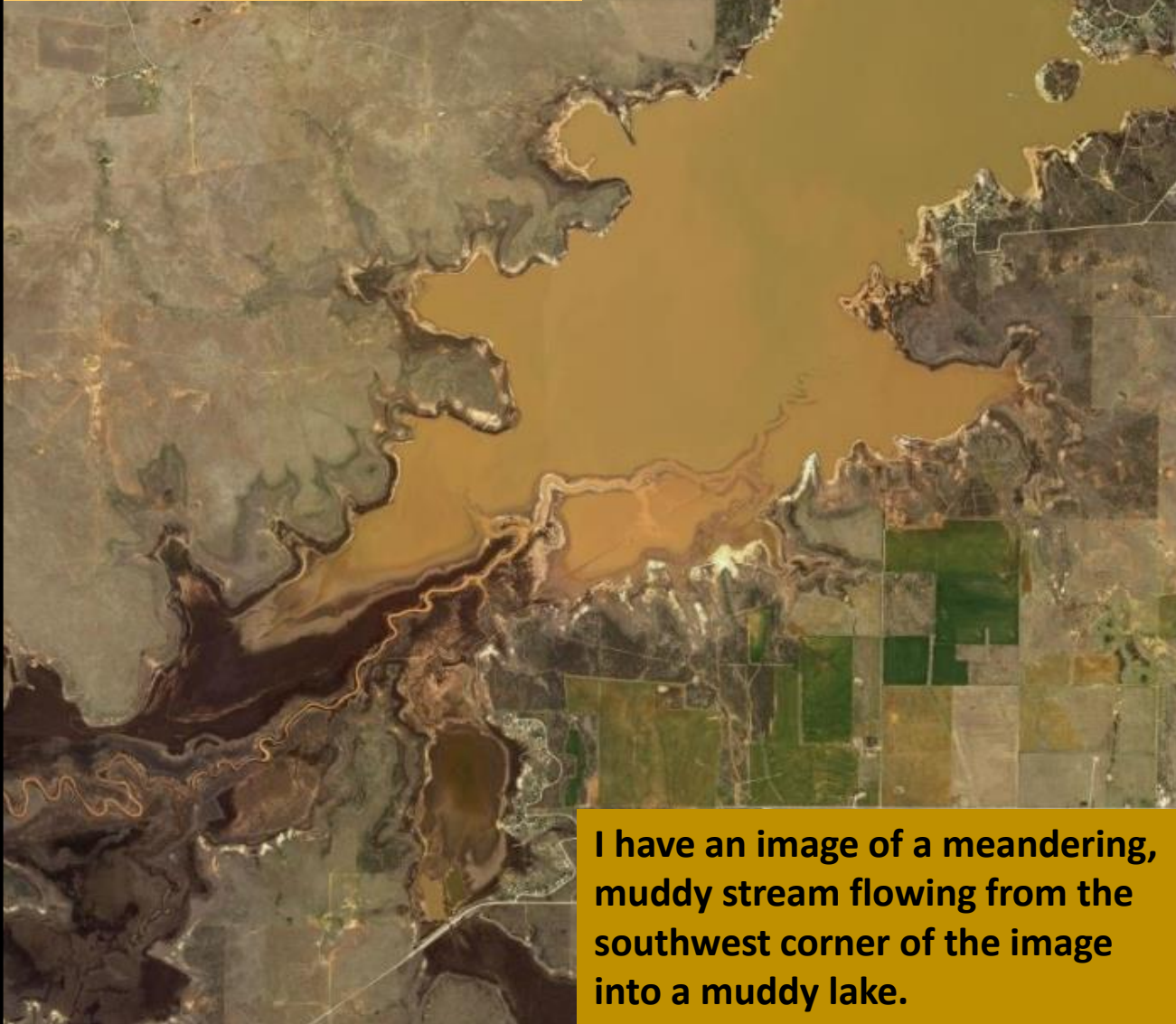


B





**7. Which photograph shows a lake whose level has dropped so much in a drought that the fishing pier is on dry land?**



**I have an image of a meandering, muddy stream flowing from the southwest corner of the image into a muddy lake.**





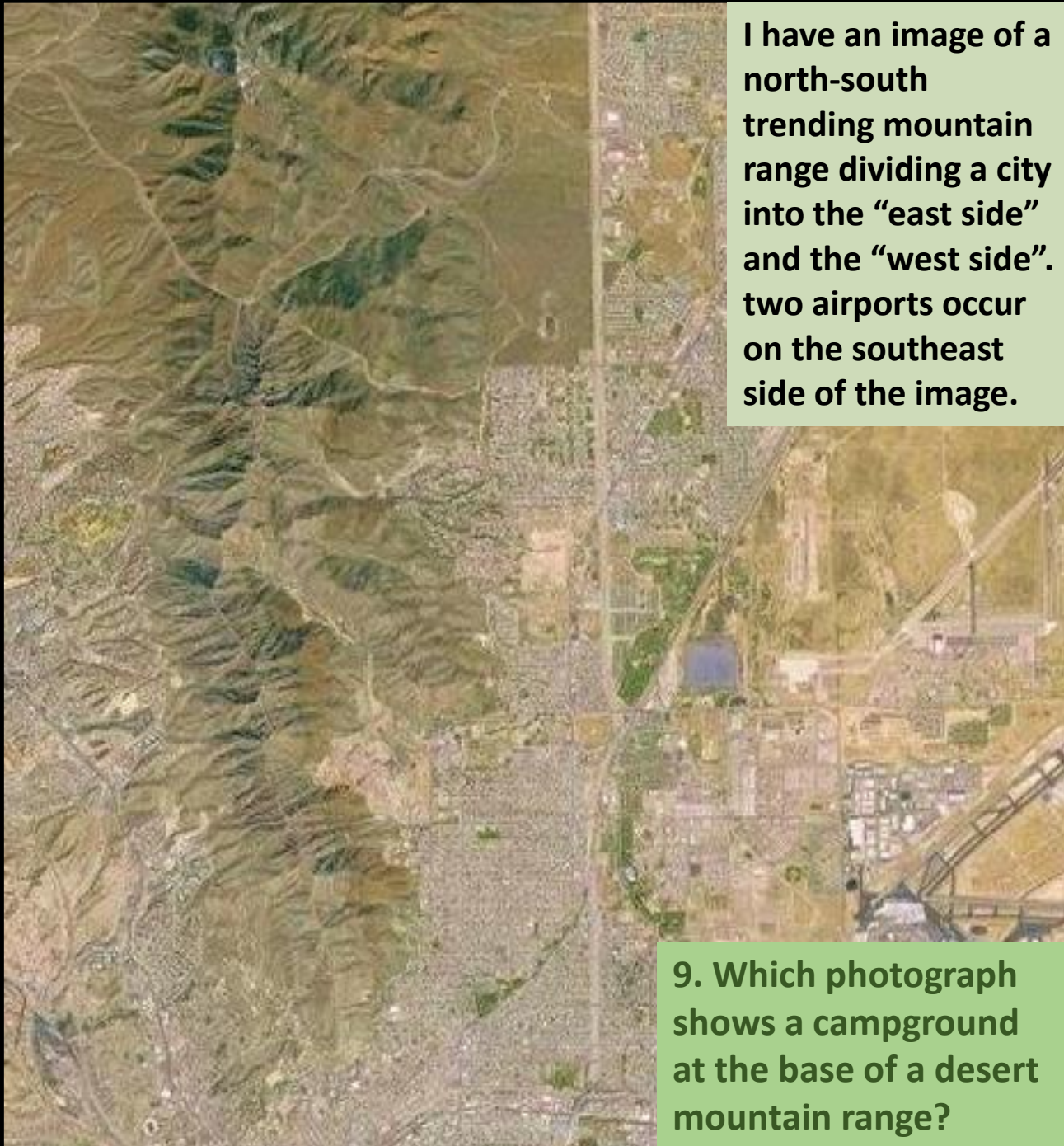
8. Which photograph shows a ship channel with a large ship passing between the mainland and an island?



I have an image of northwest-trending channel in an industrial landscape that contains three large islands. Boats with white wakes appear in the channel

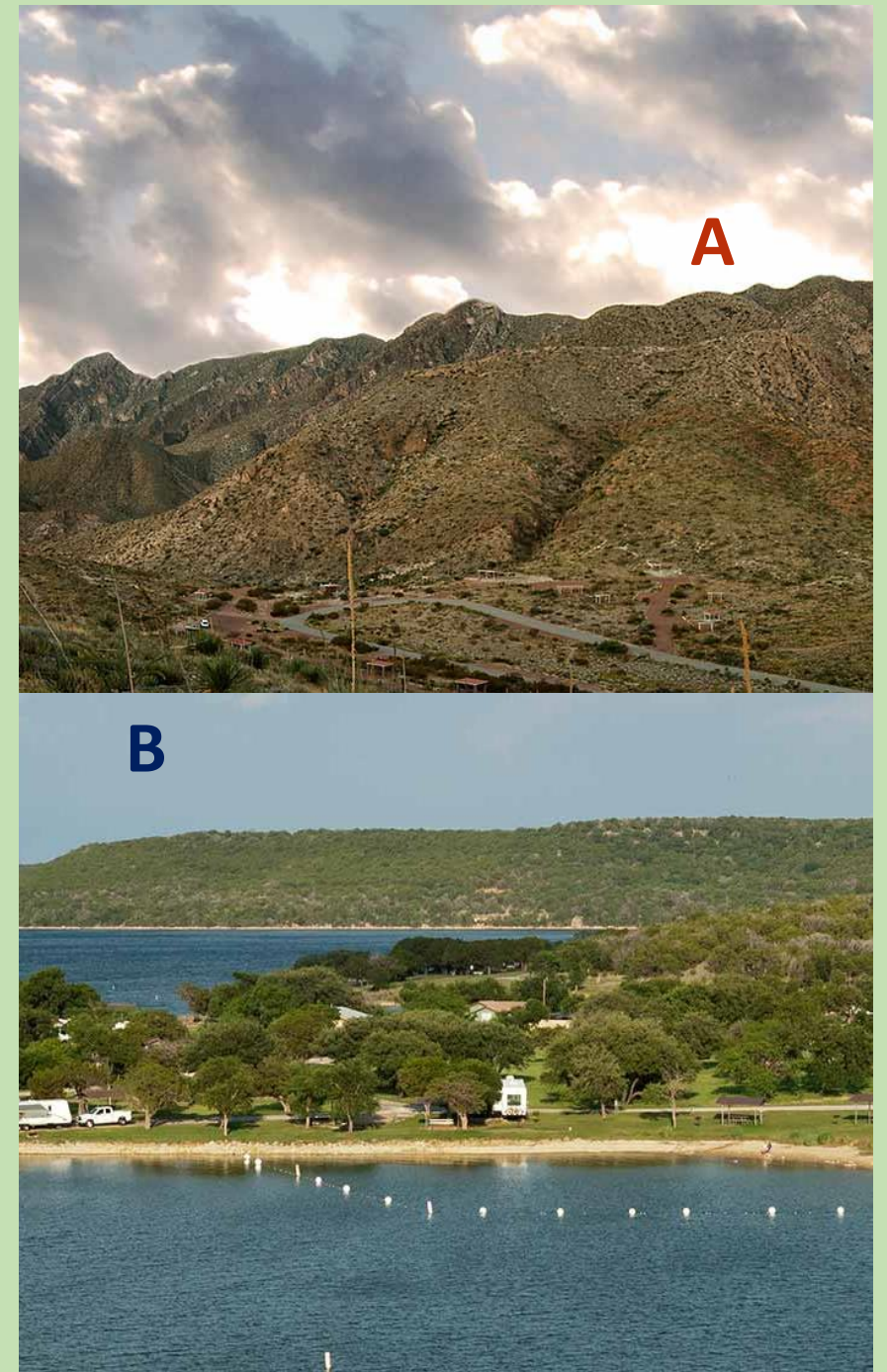






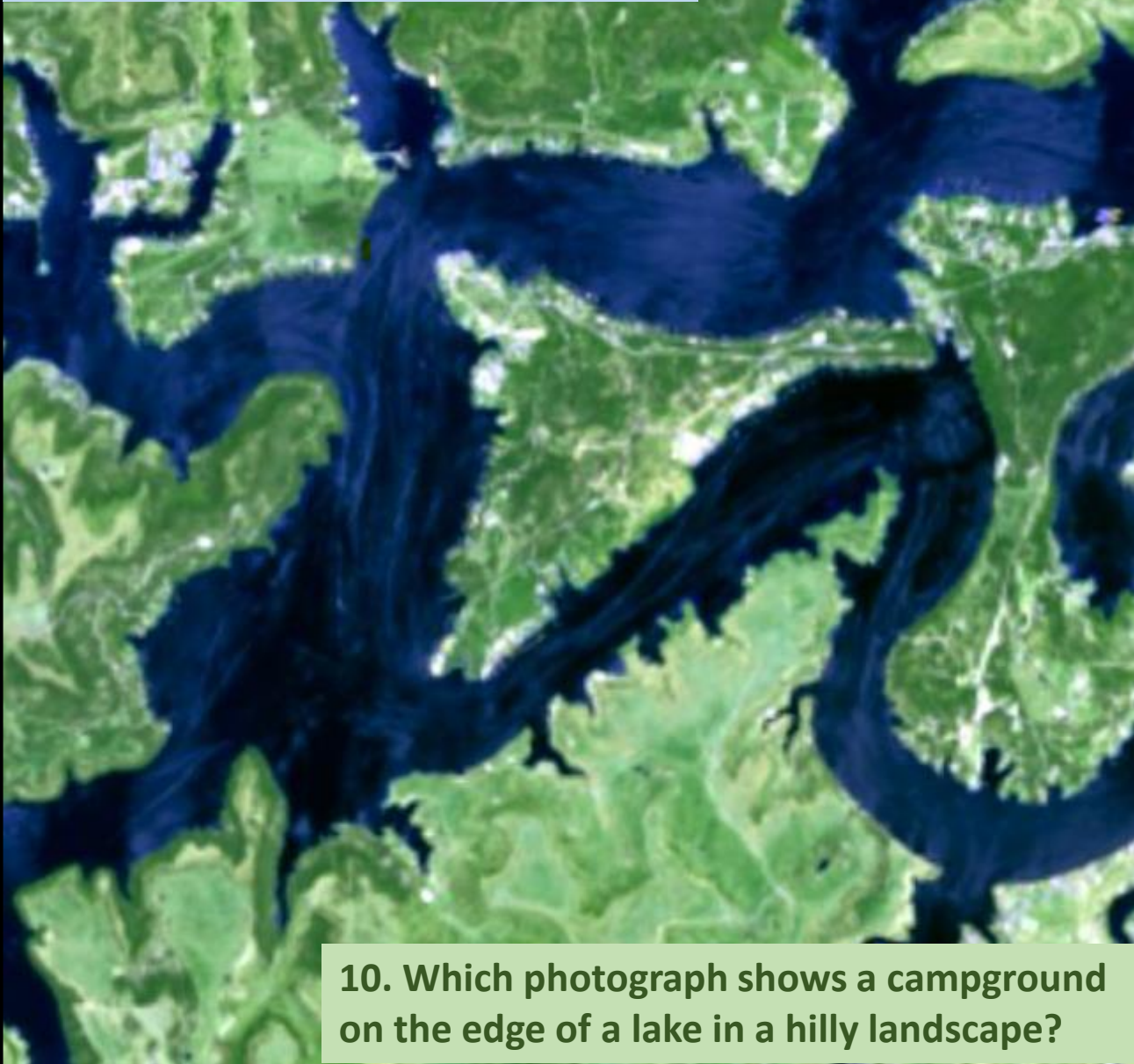
I have an image of a north-south trending mountain range dividing a city into the “east side” and the “west side”. two airports occur on the southeast side of the image.

9. Which photograph shows a campground at the base of a desert mountain range?





I have an image of a meandering river valley in a hilly landscape that has been flooded to create a recreational lake.



10. Which photograph shows a campground on the edge of a lake in a hilly landscape?

A

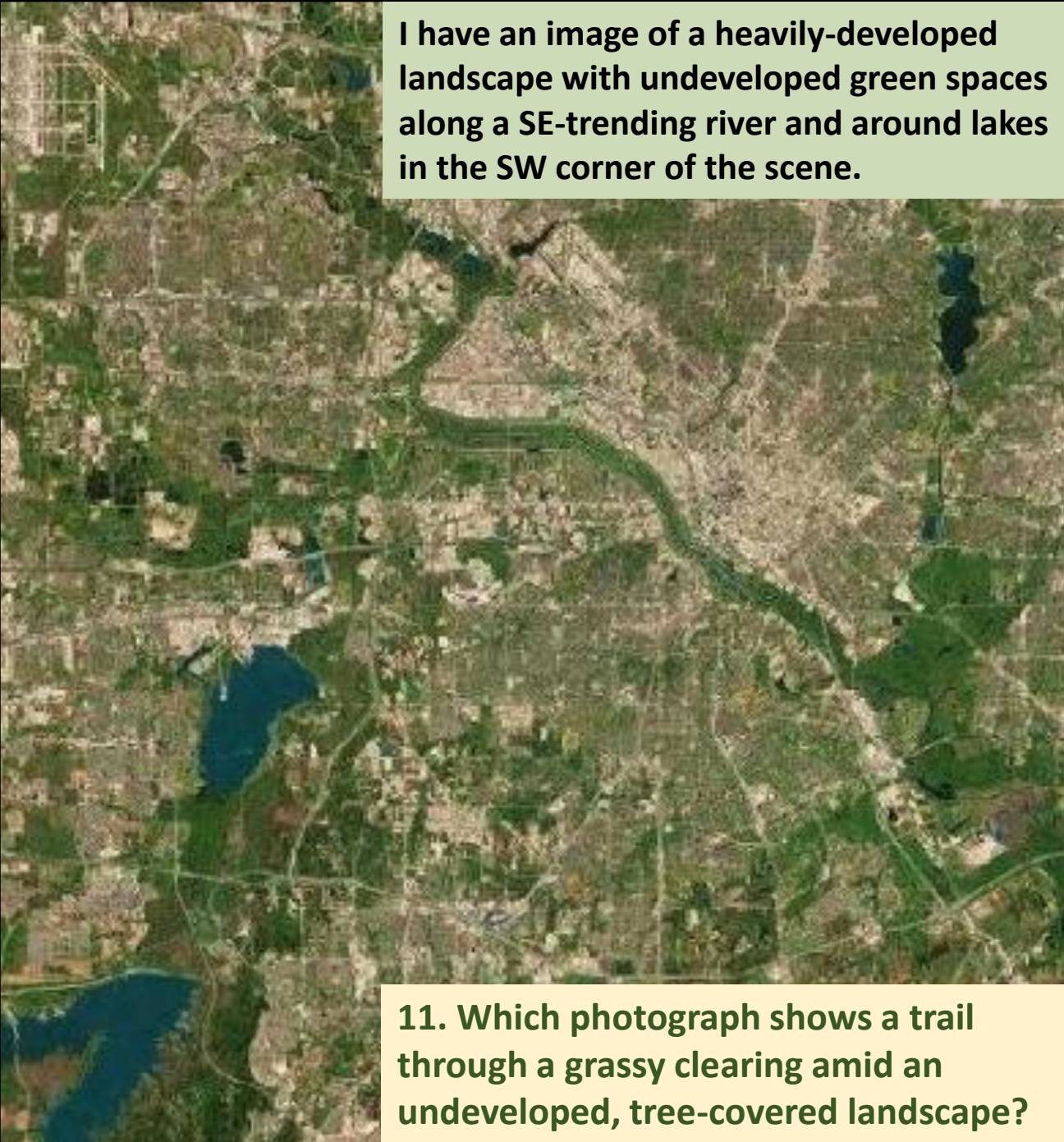


B





I have an image of a heavily-developed landscape with undeveloped green spaces along a SE-trending river and around lakes in the SW corner of the scene.



11. Which photograph shows a trail through a grassy clearing amid an undeveloped, tree-covered landscape?







12. Which photograph shows a boat moving through a forested river where trees are growing in the channel?

I have an image of a muddy, meandering stream that flows through a forest into a dark lake on the east side of the scene.

