

WATCHING OVER TEXAS FROM SPACE

An Earth Observations education resource for grades 4 -12 in support of TEKS covering
Earth Science and Environmental Science Standards

Developed by TexasView with support from Grant Number G14AP00002 from the Department of the
Interior,

3.1.4 WHICH IS WHICH? POSTER ACTIVITY

3.1.4.1 WHICH IS WHICH?

POSTER ACTIVITY INTRODUCTION TPWD

On the following page, you will find imagery that covers diverse Texas landscapes surrounding twelve Texas State Parks. Match images to the descriptions in the exercise. Natural landscape features documented in the imagery include bays, barrier islands, canyons, rivers, lakes, plateaus, mountains, and dune fields.

The poster is designed to be printed at 36" X 36" but can be downsized for tabletop use. Students will match images with the descriptions in the center of the poster. Hanging the poster on a magnetic board and providing magnetic numbers works well.

All imagery was captured from the Texas Watershed Viewer:

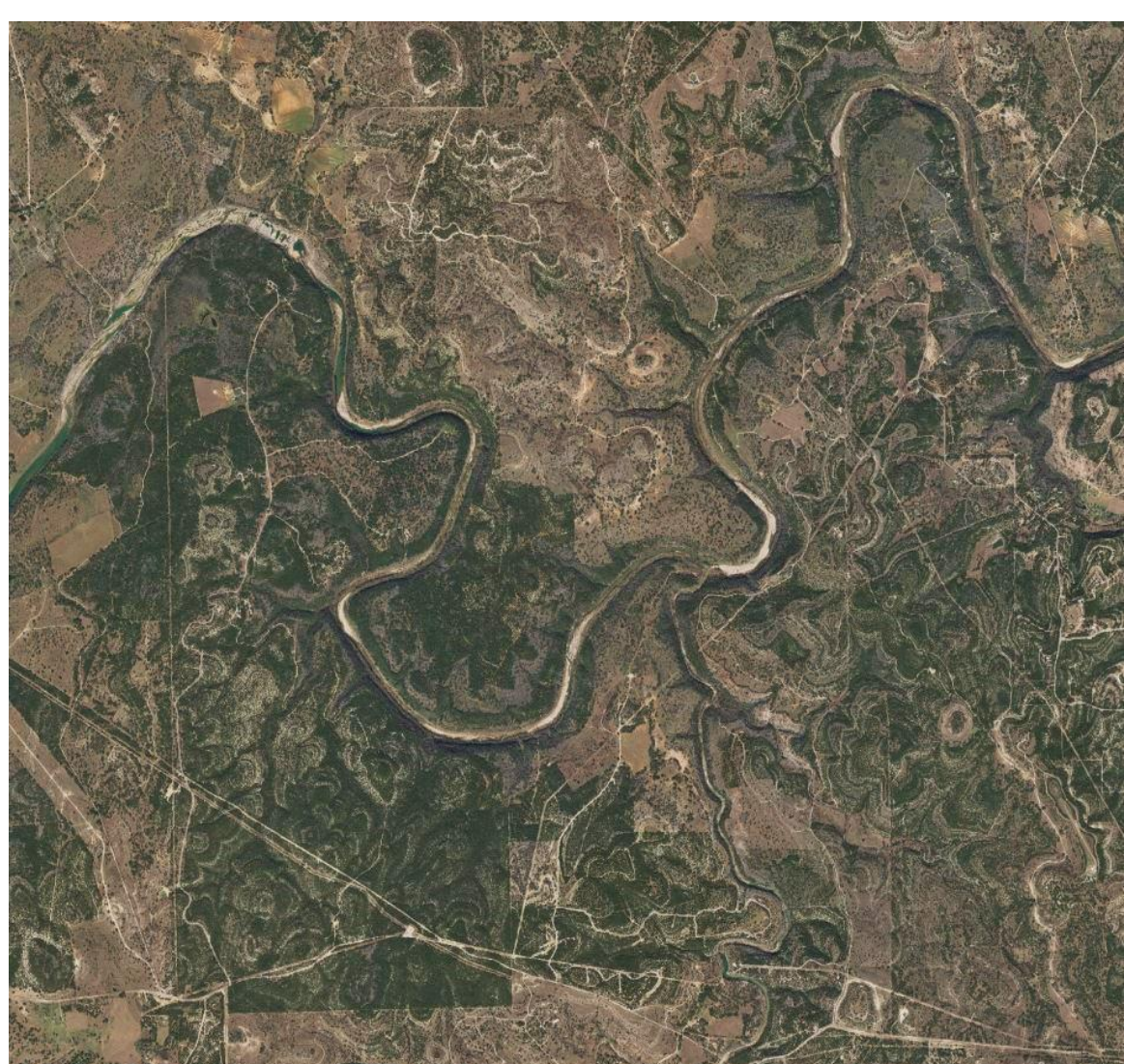
<https://tpwd.maps.arcgis.com/apps/Viewer/index.html?appid=2b3604bf9ced441a98c500763b8b1048>

See the Imagery Key for Texas Parks and Wildlife (TPWD) Lessons and Activities for State Park website links.

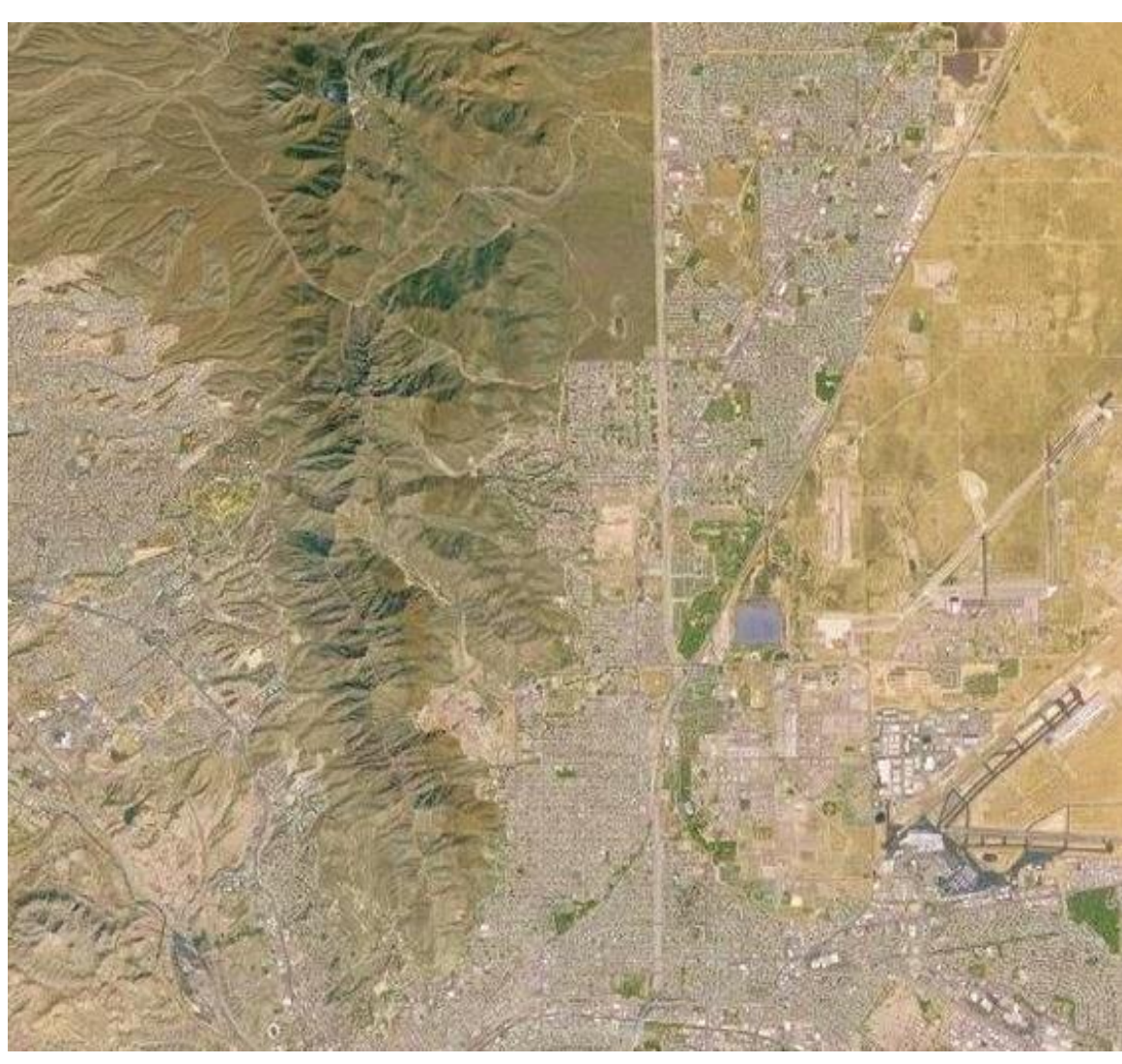
WHICH IS WHICH?



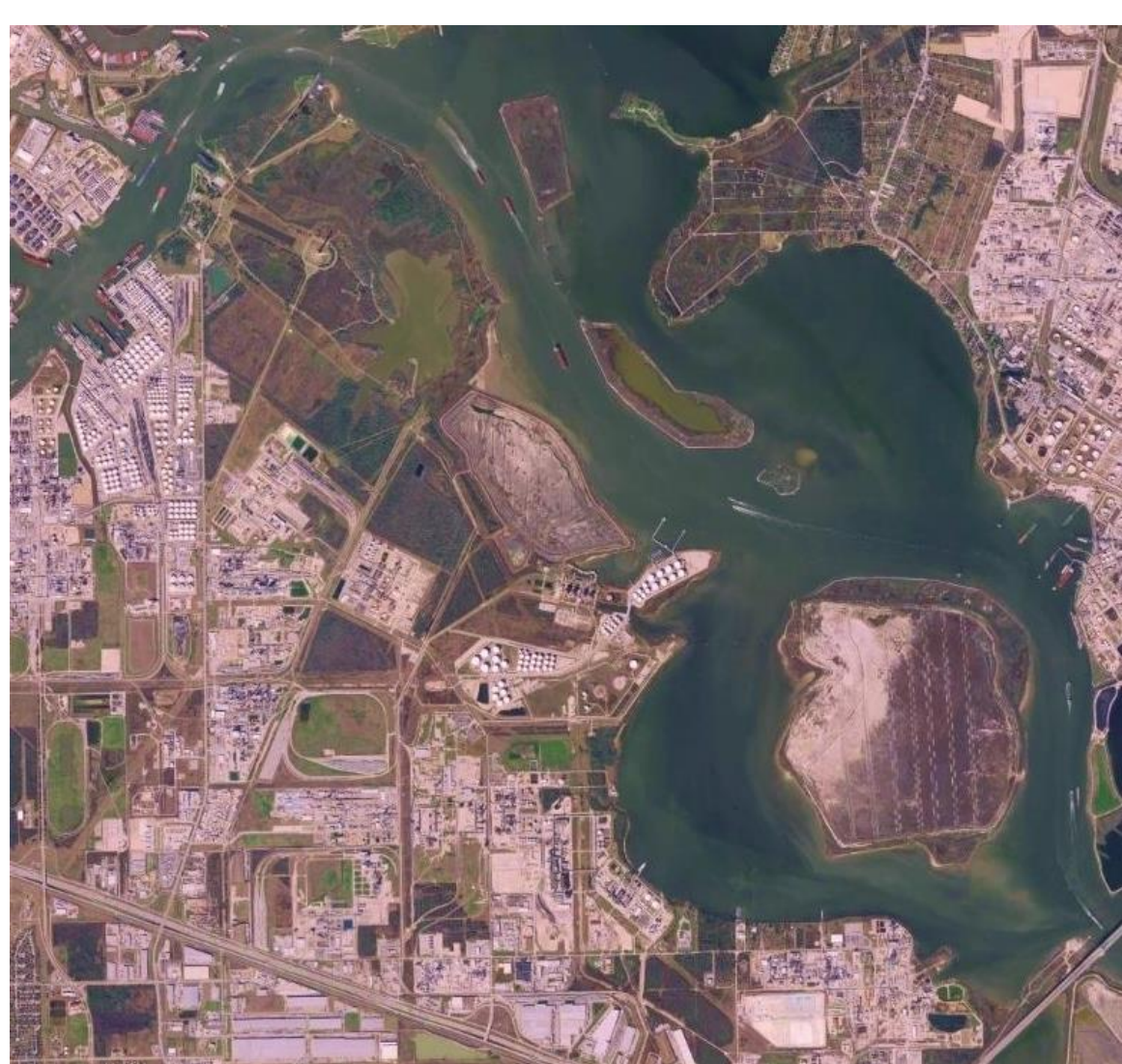
A _____



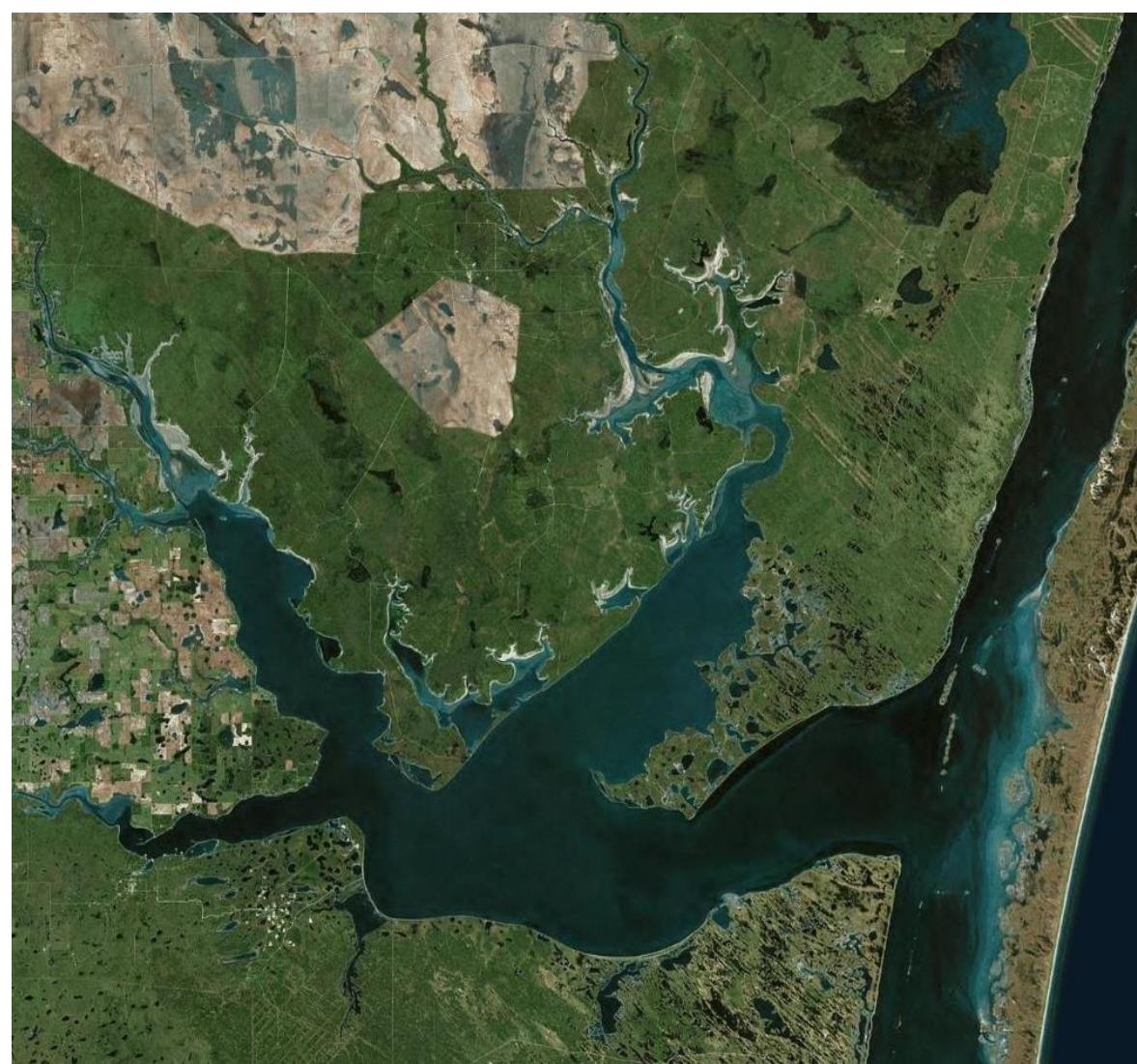
B _____



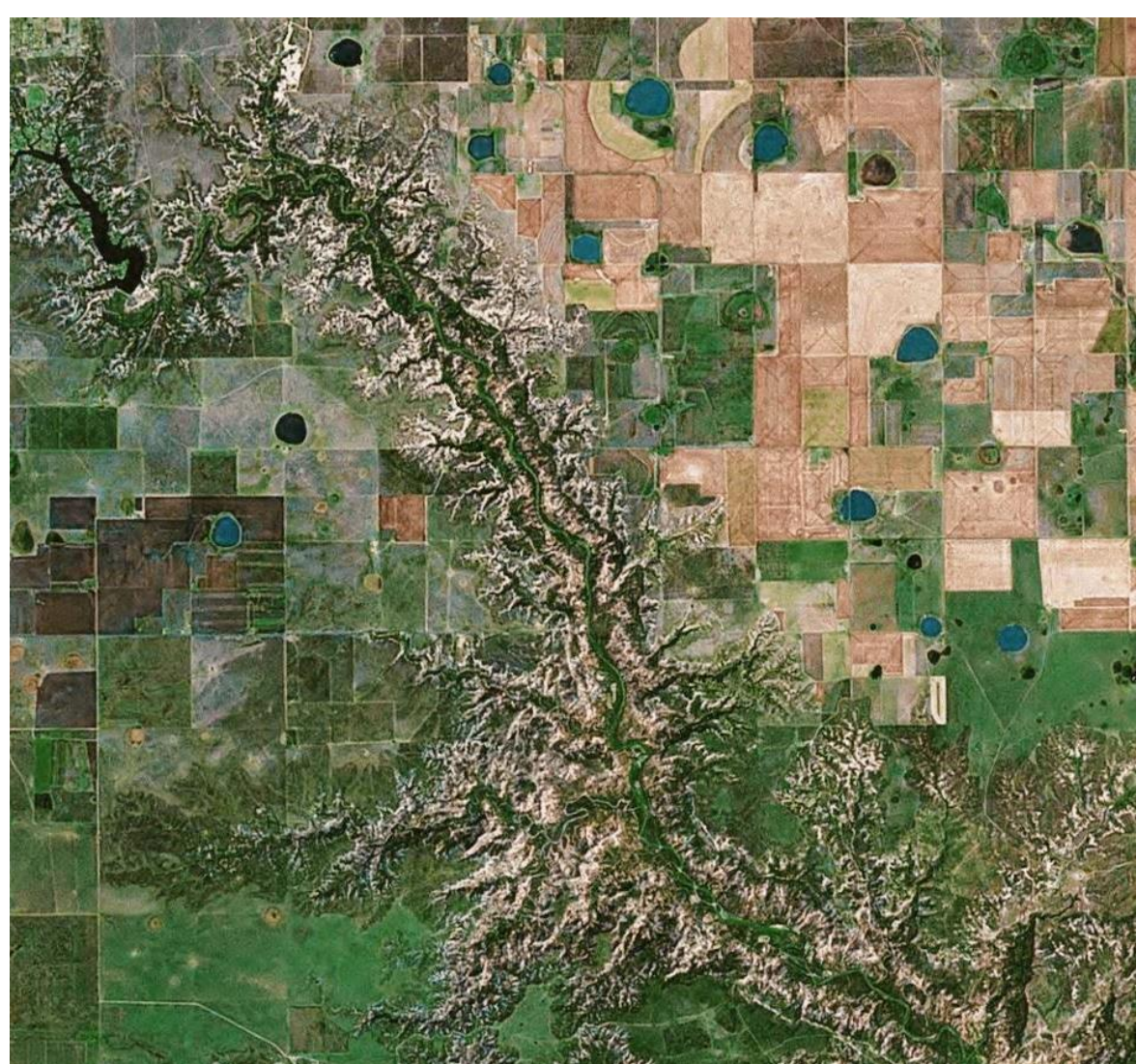
_____ C



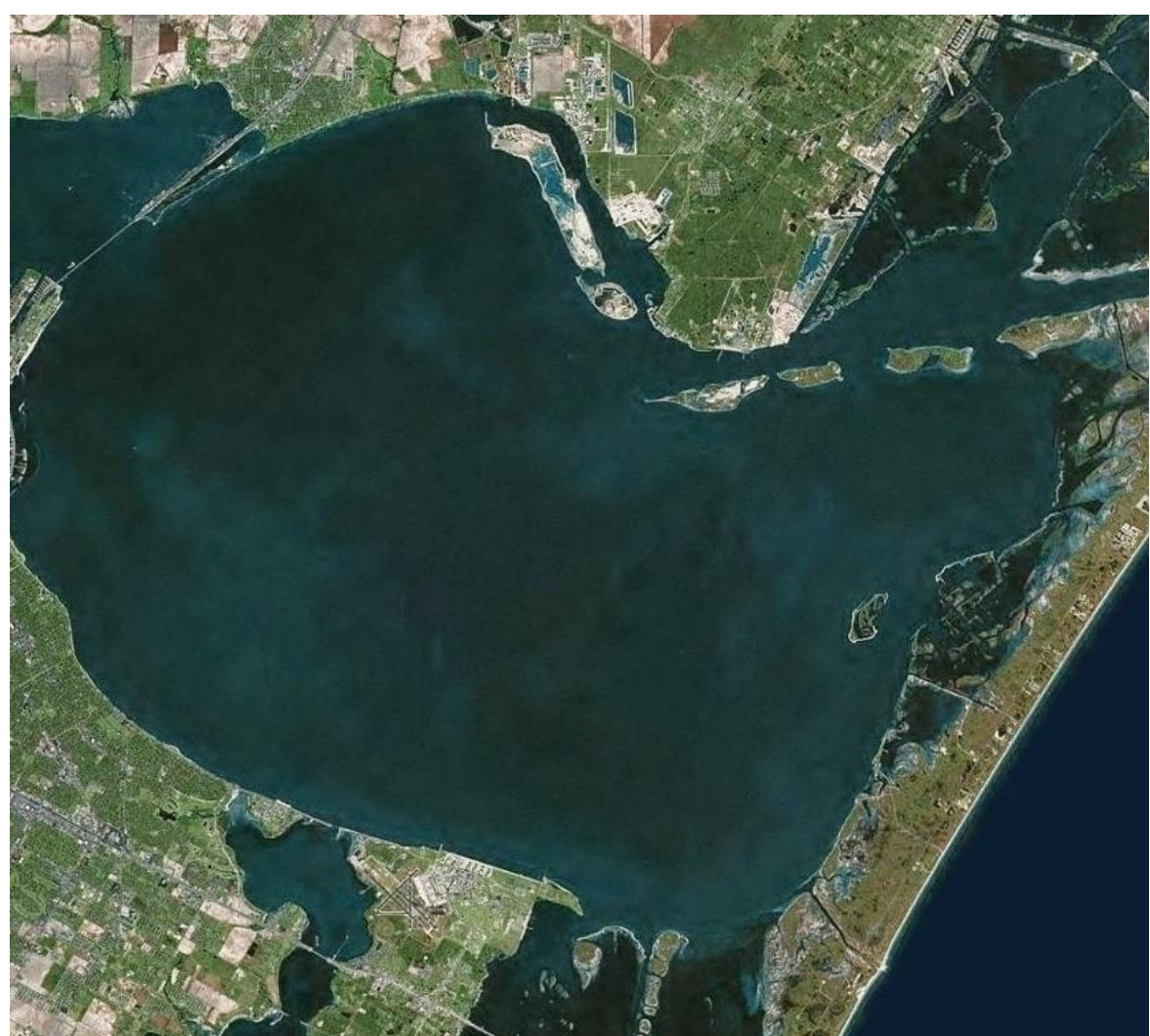
_____ D



L _____



K _____



J _____



I _____

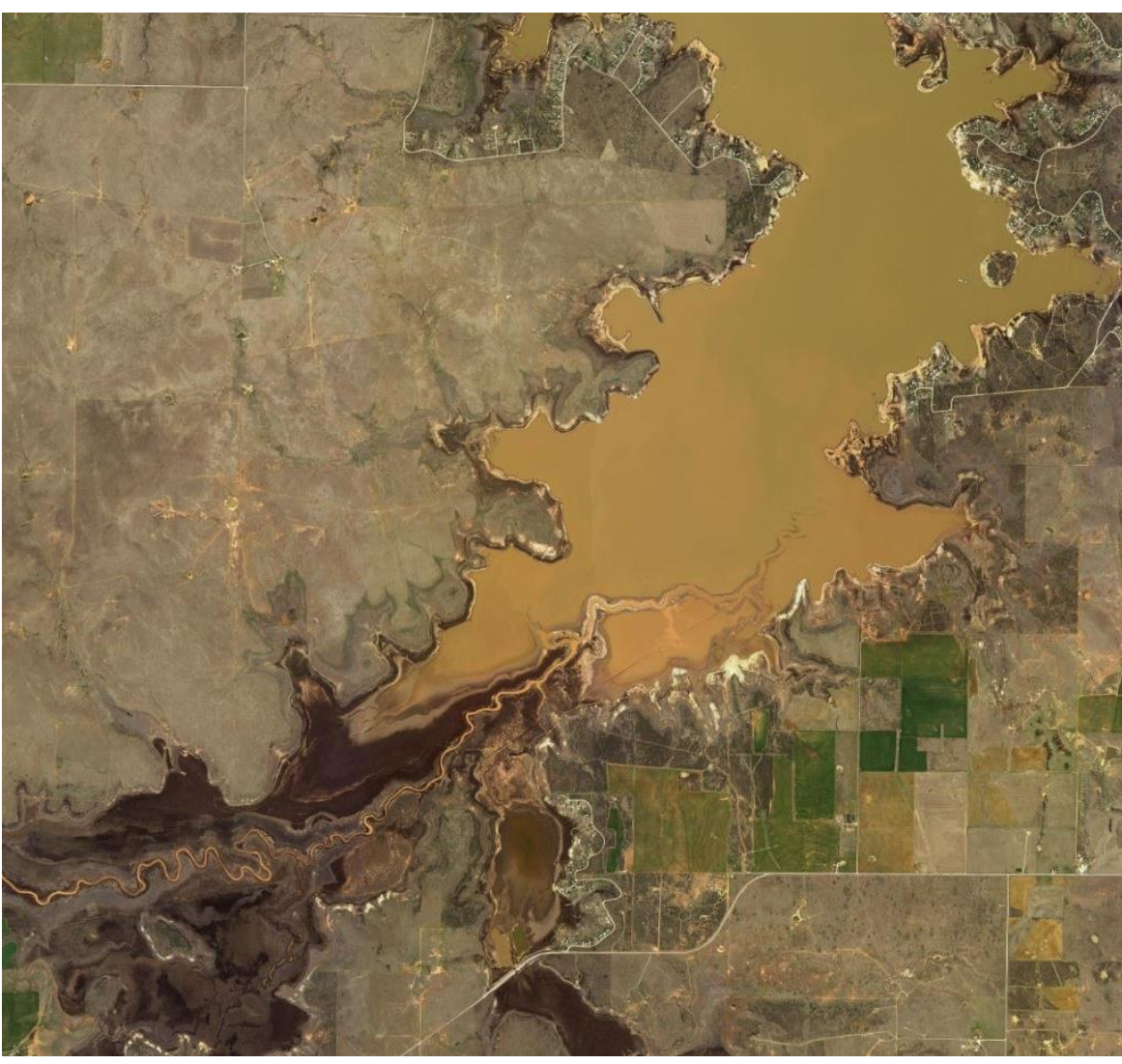


_____ H



_____ G

1. An oval mountain bare of vegetation rises above a sparsely vegetated landscape.
2. A broad sand dune field is bordered on its southwest side by an oil field.
3. Drought-induced lake-level drop has exposed lake-bottom sediments and stranded boat docks above water level.
4. A north-south trending mountain range divides a city into the “east side” and the “west side”. An airport is visible on the southeast side of the image.
5. An east-west trending meandering river has eroded a narrow canyon into a hilly plateau.
6. A southeast-trending river with a broad, green floodplain cuts through a heavily developed landscape. A large airport is present on the northwest corner of the image, and a drinking water reservoir on the south-central part of the image.
7. A muddy stream flows across a lakebed exposed by drought, from the southwest corner of the image into a muddy lake. Agricultural fields occur on the southeast side of the lake.
8. Three rivers enter an east-west trending bay that joins a north-northwest trending bay behind a barrier island.
9. A southeast-trending river has eroded a wide, deep canyon into a flat-lying agricultural landscape, which is dotted with small seasonal lakes.
10. A barrier Island trends northeast on the southeast side of the image. A large bay behind the barrier island is spanned by a bridge at its northeast end.
11. A broad, northwest-trending channel within a heavily developed industrial landscape contains three large islands. Numerous boats with white wakes appear throughout the channel.
12. A muddy, meandering stream enters the landscape on the west side of the image and follows a circuitous route into a dark lake on the southeast side of the image.



_____ E



_____ F

WATCHING OVER TEXAS FROM SPACE

An Earth Observations education resource for grades 4 -12 in support of TEKS covering
Earth Science and Environmental Science Standards
Developed by TexasView with support from Grant Number G14AP00002 from the Department of the
Interior,

3.1.4.2 WHICH IS WHICH?

POSTER ACTIVITY INTRODUCTION NASA EO

On the following page, you will find imagery from the NASA Earth Observatory that covers diverse Texas landforms, natural hazards, meteorological events, and human infrastructure. Match images to the descriptions in the exercise. Natural landscape features documented in the imagery include bays, barrier islands, canyons, rivers, lakes, plateaus, mountains, and dune fields. Meteorological events include snow, flooding, and dust storms.

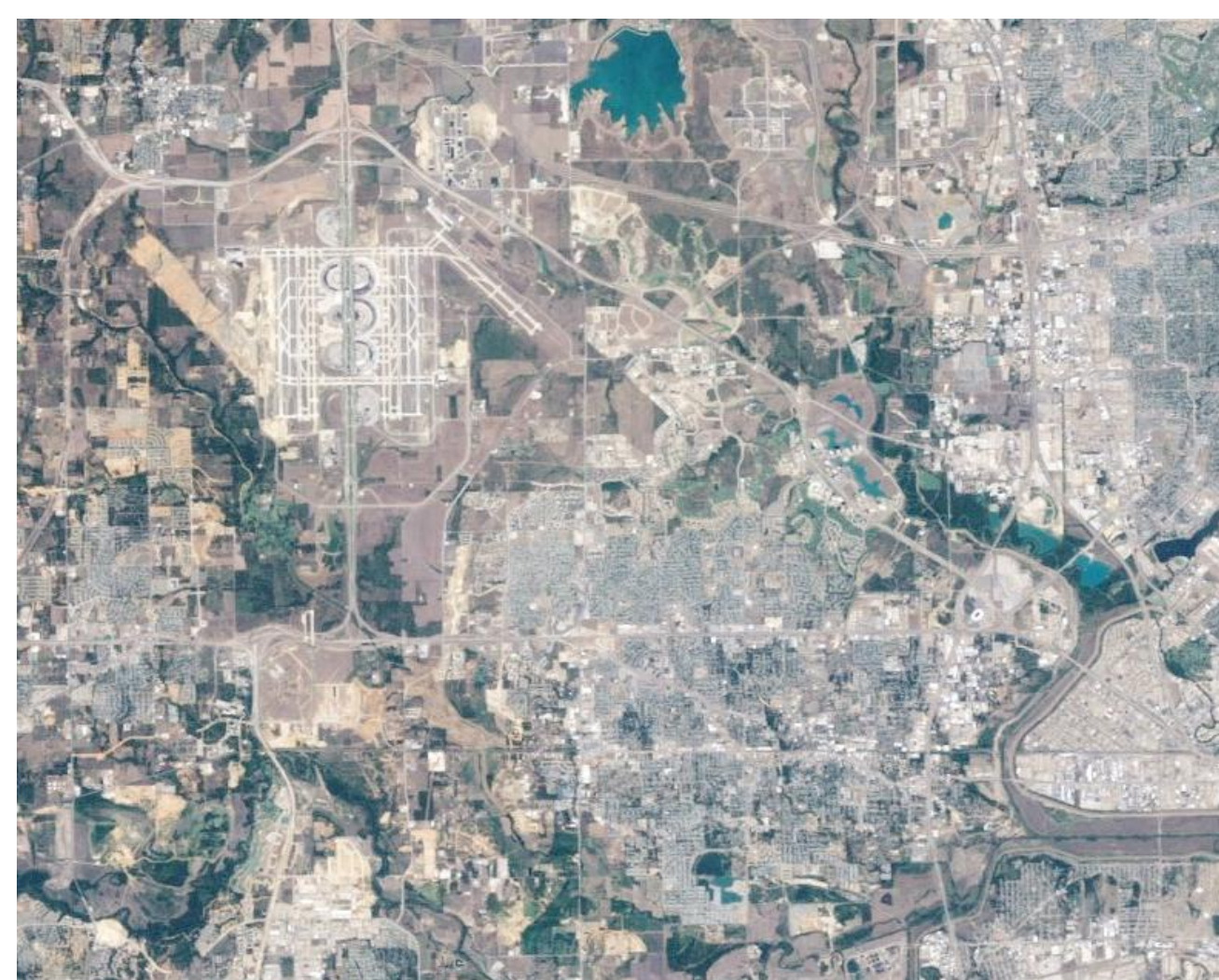
The poster is designed to be printed at 36" X 36" but can be downsized for tabletop use. Students will match images with the descriptions in the center of the poster. Hanging the poster on a magnetic board and providing magnetic numbers works well.

All imagery was captured from the NASA Earth Observatory web site:

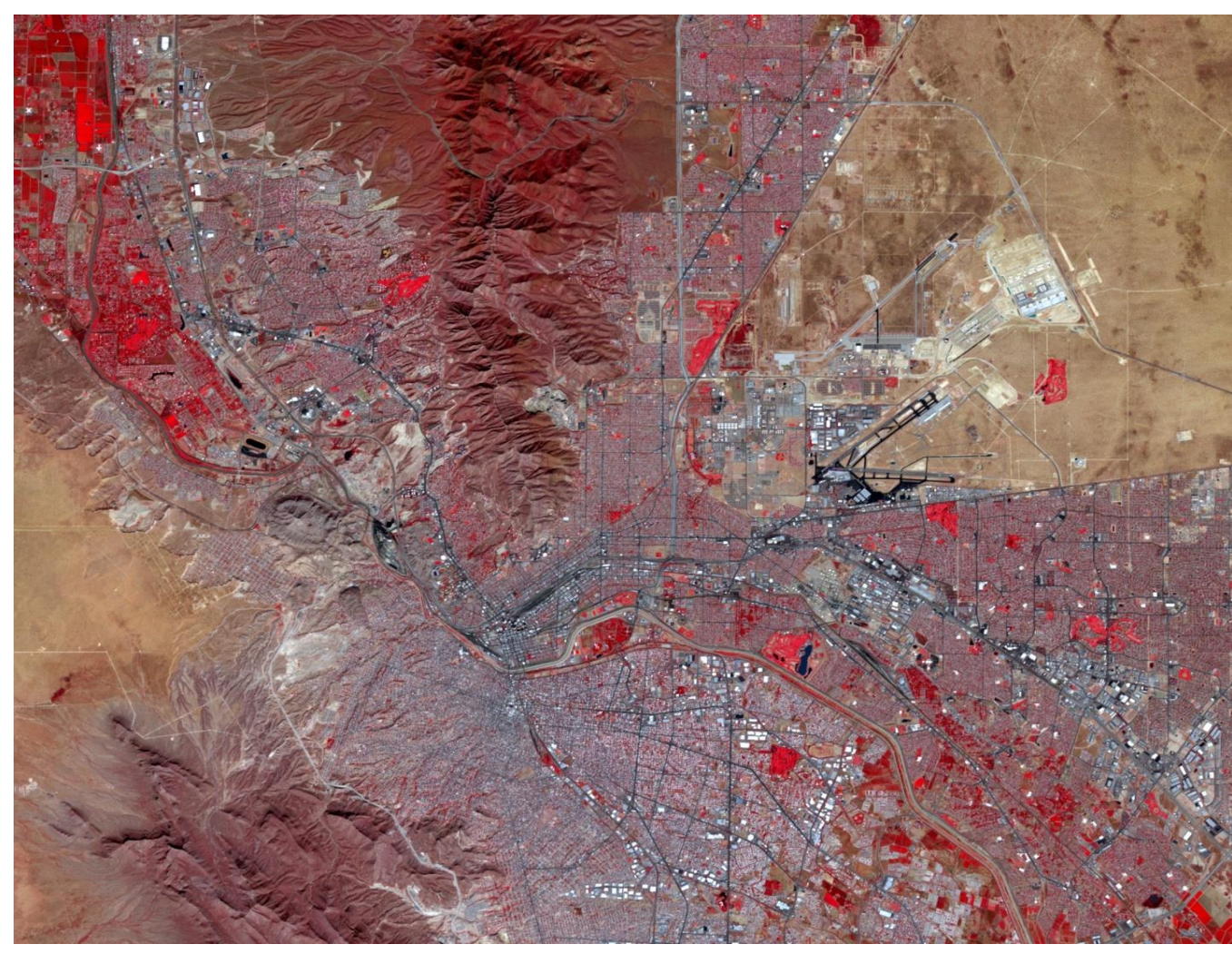
[NASA Earth Observatory - Home](#)

See the Imagery Key for NASA Earth Observatory Lessons and Activities for website links.

WHICH IS WHICH?



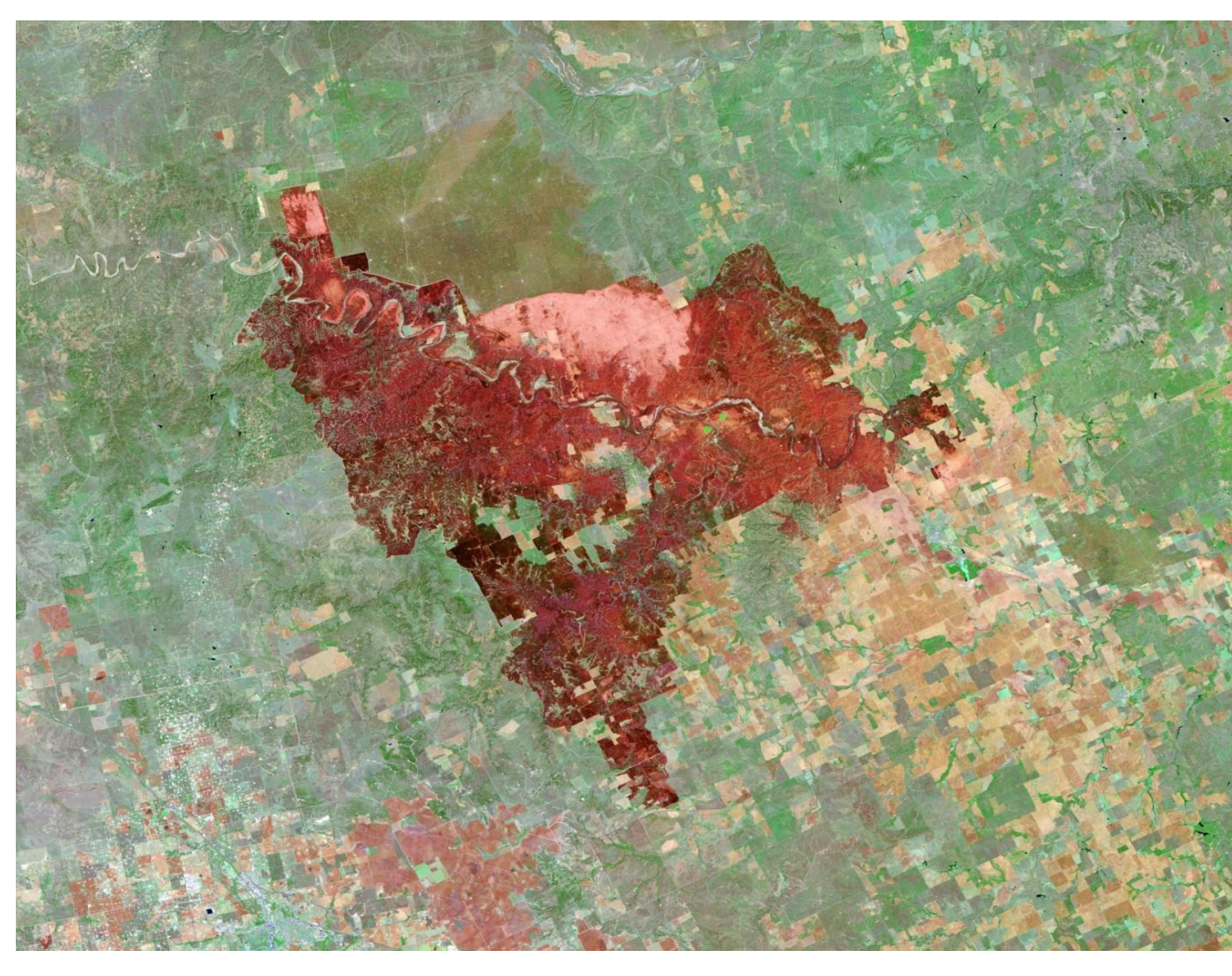
A _____



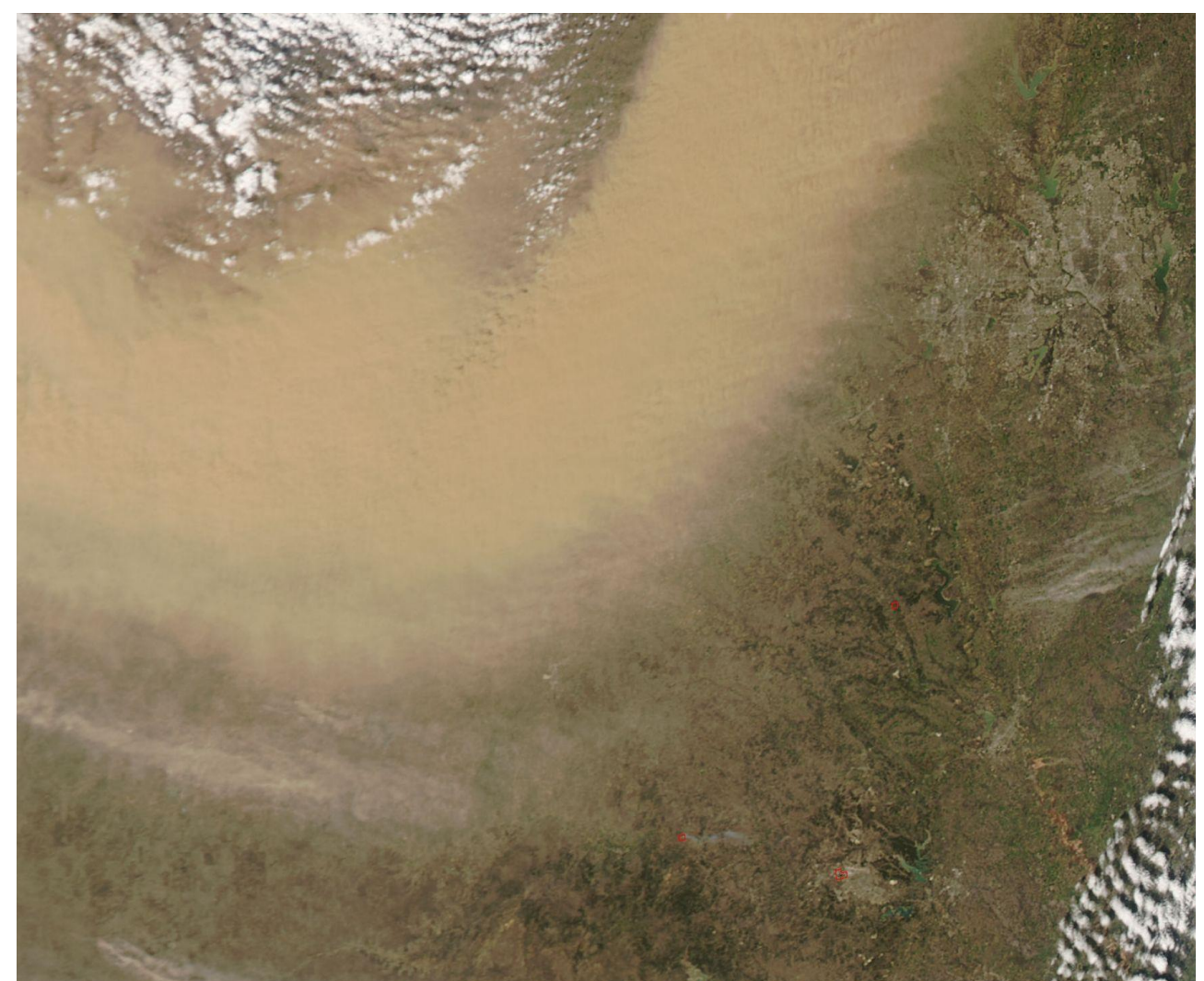
B _____



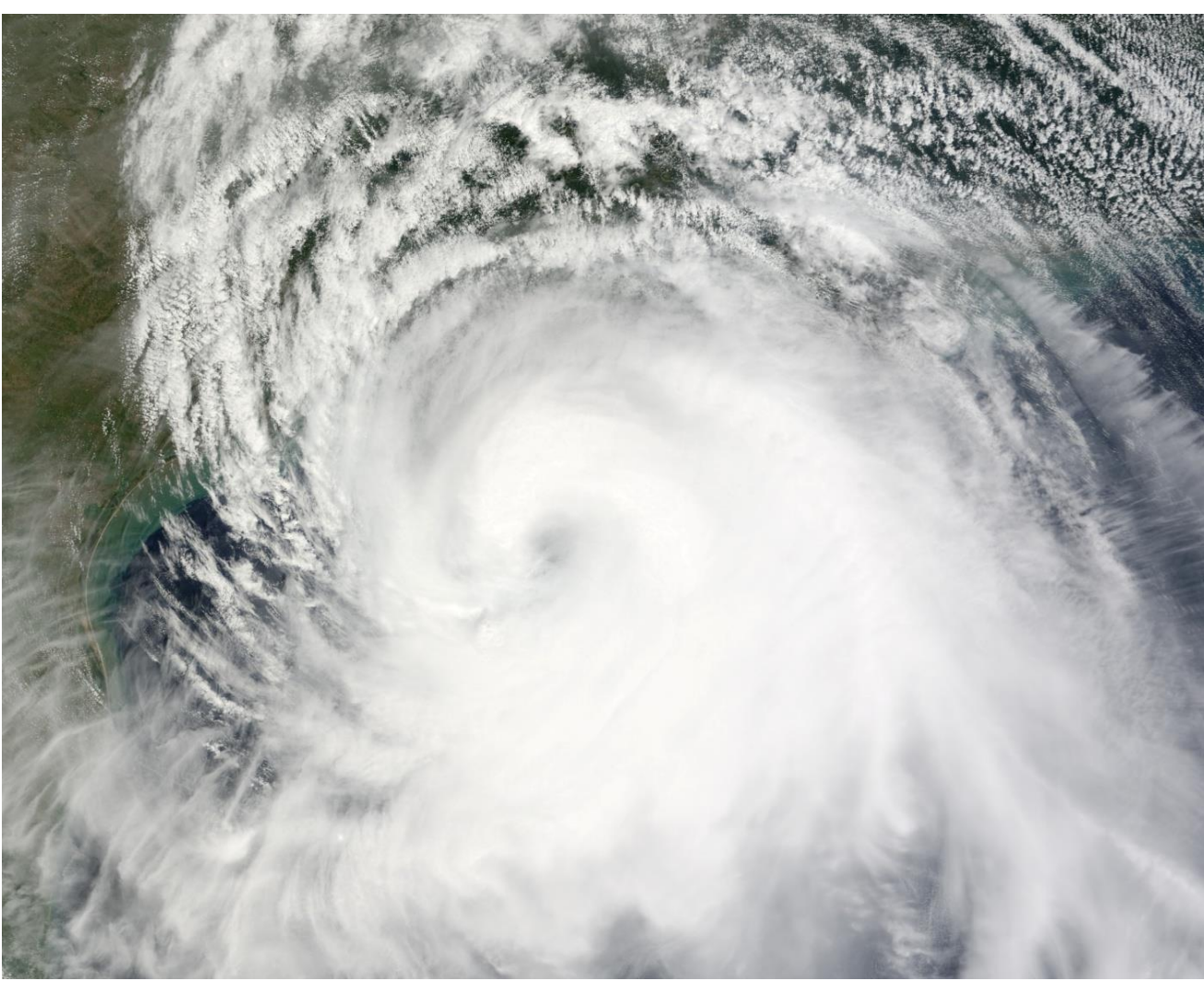
_____ C



_____ D



L _____



K _____

1. A coastline with a barrier island and a peninsula enclosing a large bay. You can also see a large city and cloud formations over the ocean

2. A large hurricane approaching a coastline.

3. An industrial site on a channel; numerous round storage tanks mark the site of refinery facilities. You can also see ships (with wakes) moving in the channel.

4. A large dust storm approaching a city. You can also see scattered puffy cloud formations.

5. A city surrounded on all sides by an oil field. You can also see center-pivot irrigation agricultural fields.

6. A curved coastline showing several rivers delivering sediment-laden floodwaters into the ocean.

7. An airport at the edge of a city. You can also see a lake and a meandering river.

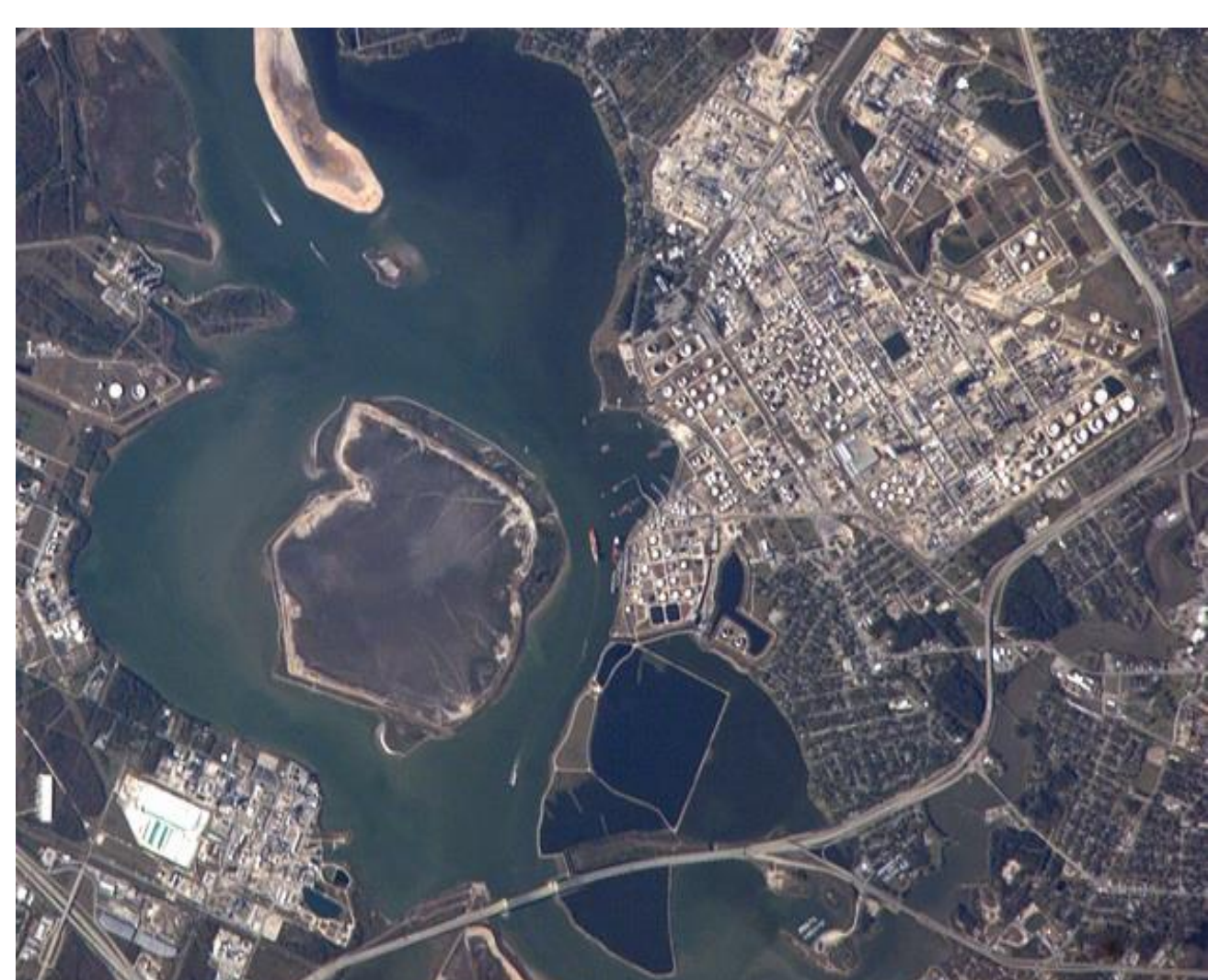
8. A large reservoir with exposed shoreline related to severe drought-induced drop in water levels. You can see a smaller reservoir where water levels do not appear to have dropped.

9. A snow-covered agricultural landscape. You can also see a highway and city.

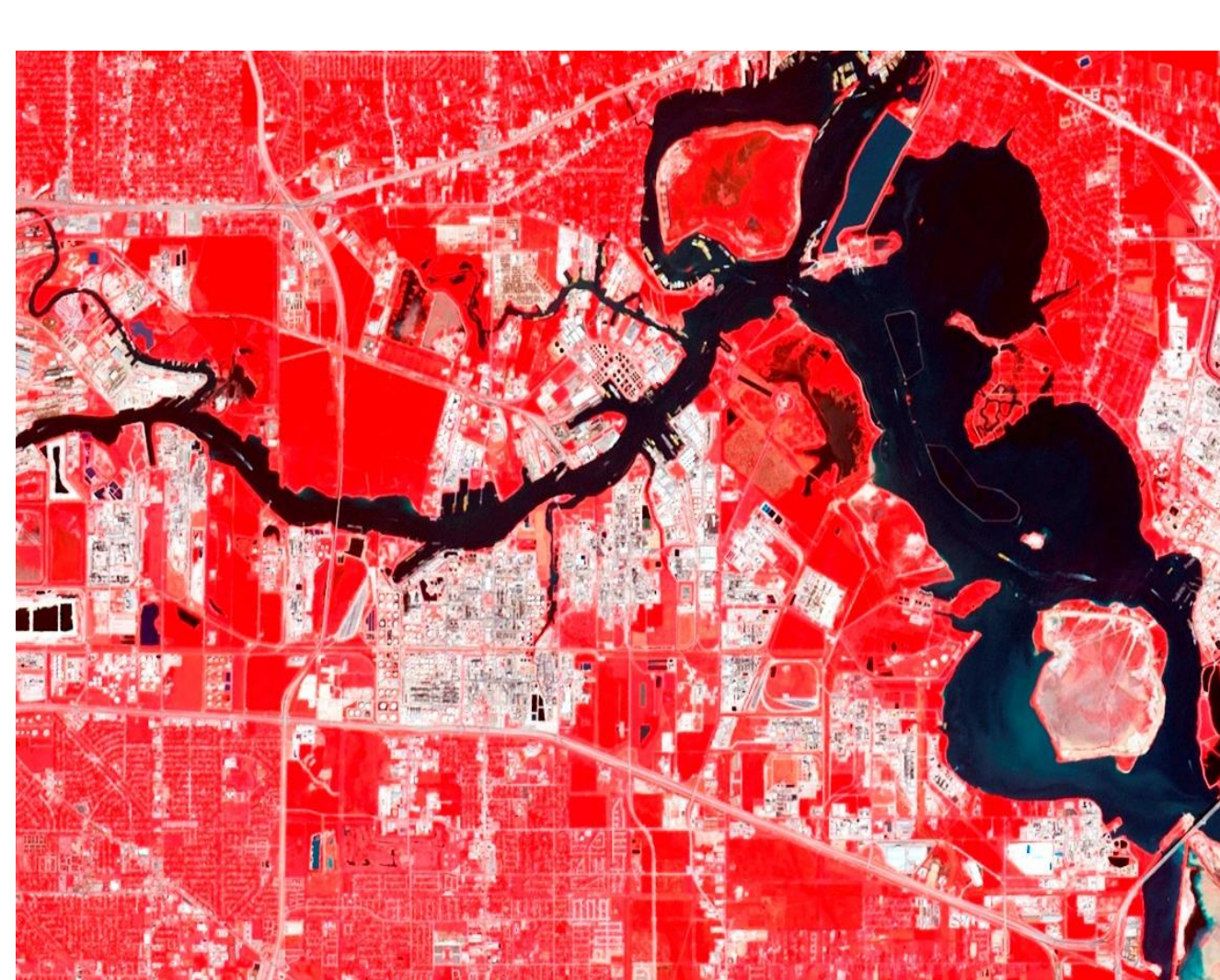
10. Two rivers join and flow into a large channel that contains two large islands.

11. A large city divided in half by a mountain range. You can also see an airport, and a river with a second city on the other side.

12. Agricultural fields surrounded by the burn scar from a wildfire. You can also see a meandering river flowing through the burned area.



_____ E



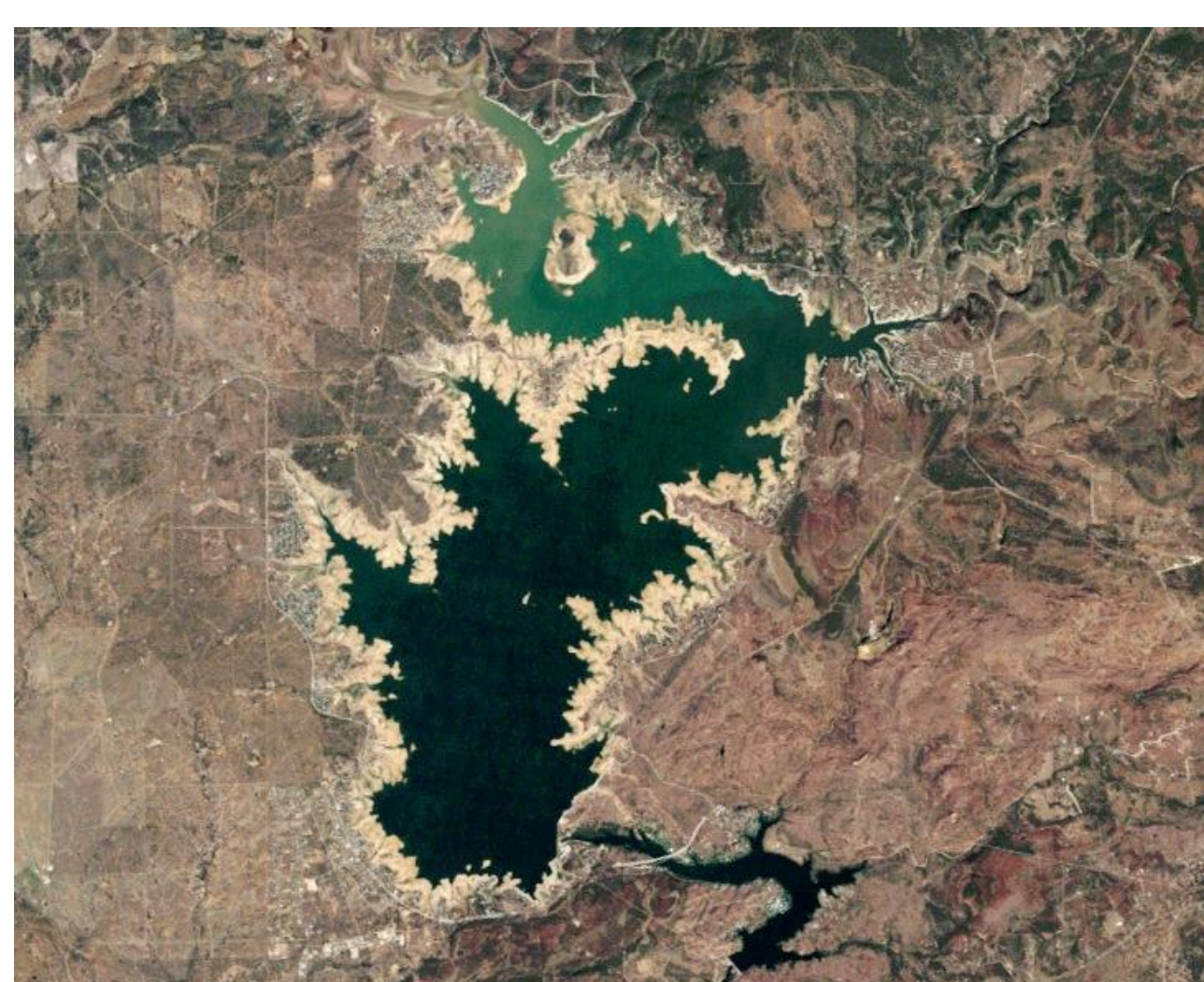
_____ F



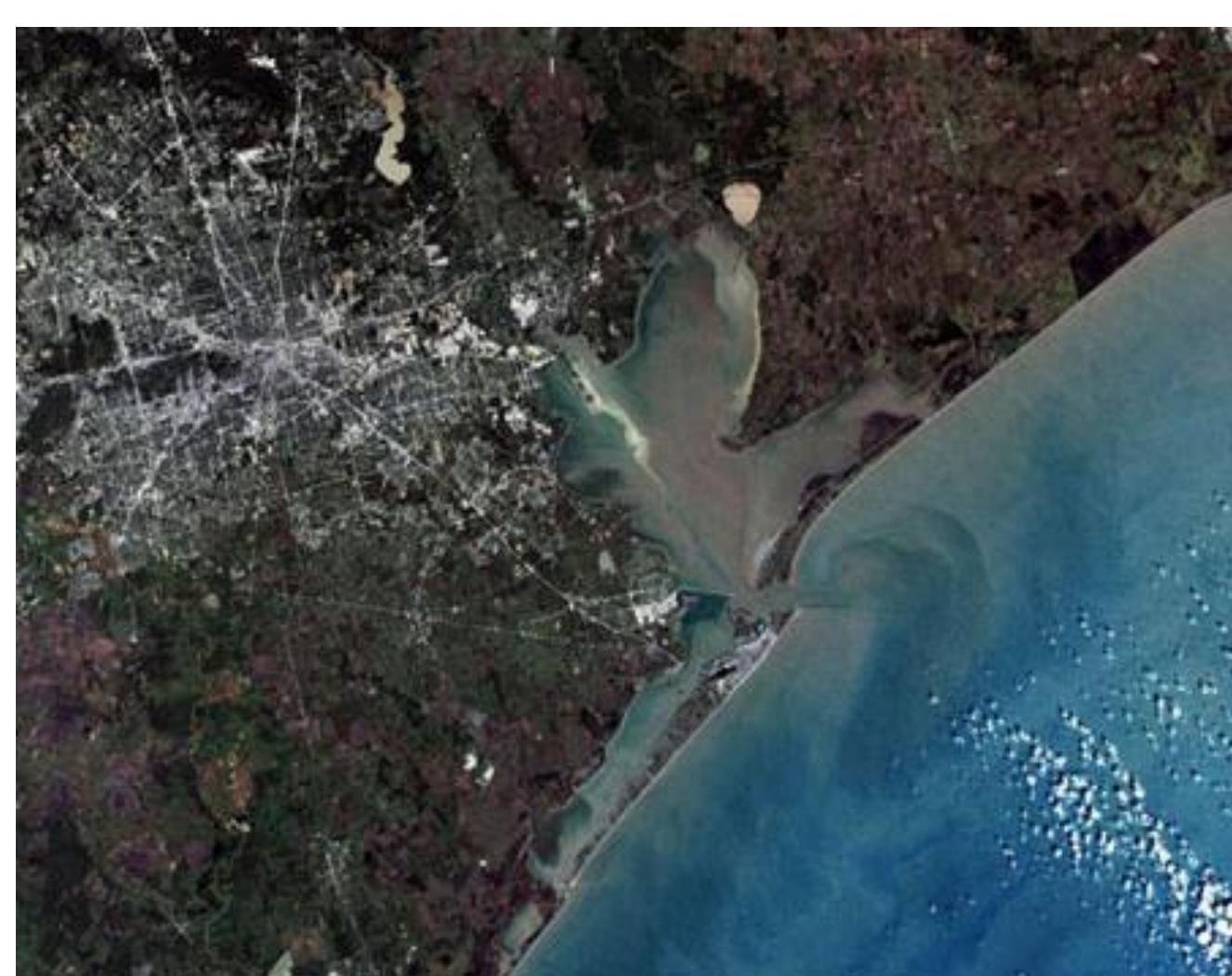
J _____



I _____



_____ H



_____ G