

WATCHING OVER TEXAS FROM SPACE

An Earth Observations education resource for grades 4 -12 in support of TEKS covering
Earth Science and Environmental Science Standards

Developed by TexasView with support from Grant Number G14AP00002 from the Department of the Interior,

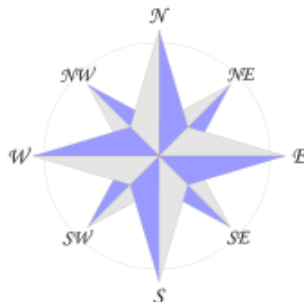
3.1.2 WHICH IS WHICH? SCRAMBLE GAME

3.1.2.1 WHICH IS WHICH? SCRAMBLE GAME TPWD

The “Which is Which?” scramble game is a table-top activity that challenges students to match descriptions of features seen on satellite imagery to the satellite images. This game can be played by individuals or in groups. The images and descriptions are scrambled together and placed in the center of the game surface. Students select cards and find the matching descriptions of images. This game is suitable for grade 4 – 12, but probably more suitable for younger students.

The images and description cards on the following pages are designed to be printed one-sided. Laminating the pages before separating the individual images and descriptions is highly recommended. All imagery was captured from the Texas Watershed Viewer. See the Which Is Which Imagery Key for those links. This document is your key: labels and images match in the same order as seen here.

Explain the compass directions below to students for reference in understanding the image descriptions.



**An oval mountain bare of
vegetation rises above a
sparsely vegetated
landscape.**

**Three rivers enter an east-
west trending bay that
joins a northwest trending
bay behind a barrier
island.**

A southeast-trending river has eroded a wide, deep canyon into a flat-lying agricultural landscape, which is dotted with small seasonal lakes.

An east-west trending meandering river has eroded a narrow canyon into a hilly plateau.

A barrier Island trends northeast on the southeast side of the image. A large bay west of the barrier island is spanned by a bridge at its northeast end.

A broad sand dune field is bordered on its southwest side by an oil field.

A muddy stream flows across a lakebed exposed by drought, from the southwest corner of the image into a muddy lake.

Agricultural fields occur on the southeast side of the lake.

A broad, northwest-trending channel in an heavily-developed landscape contains three large islands.

Round storage tanks for petroleum abound.

Numerous large boats with white wakes appear throughout the channel.

A north-south trending mountain range divides a city into the “east side” and the “west side”.

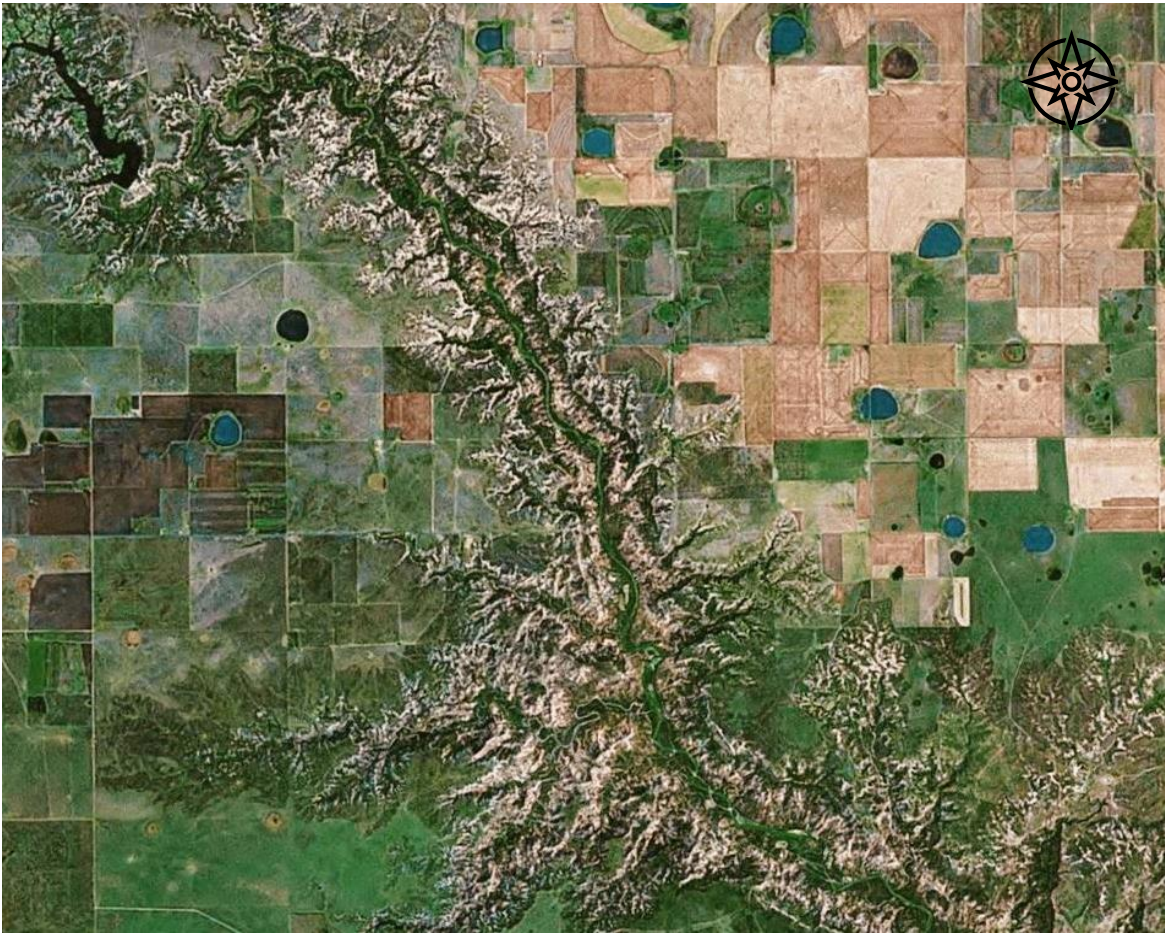
An airport is visible on the southeast side of the image.

Drought-induced lake-level drop has exposed lake-bottom sediments and stranded boat docks above water level.

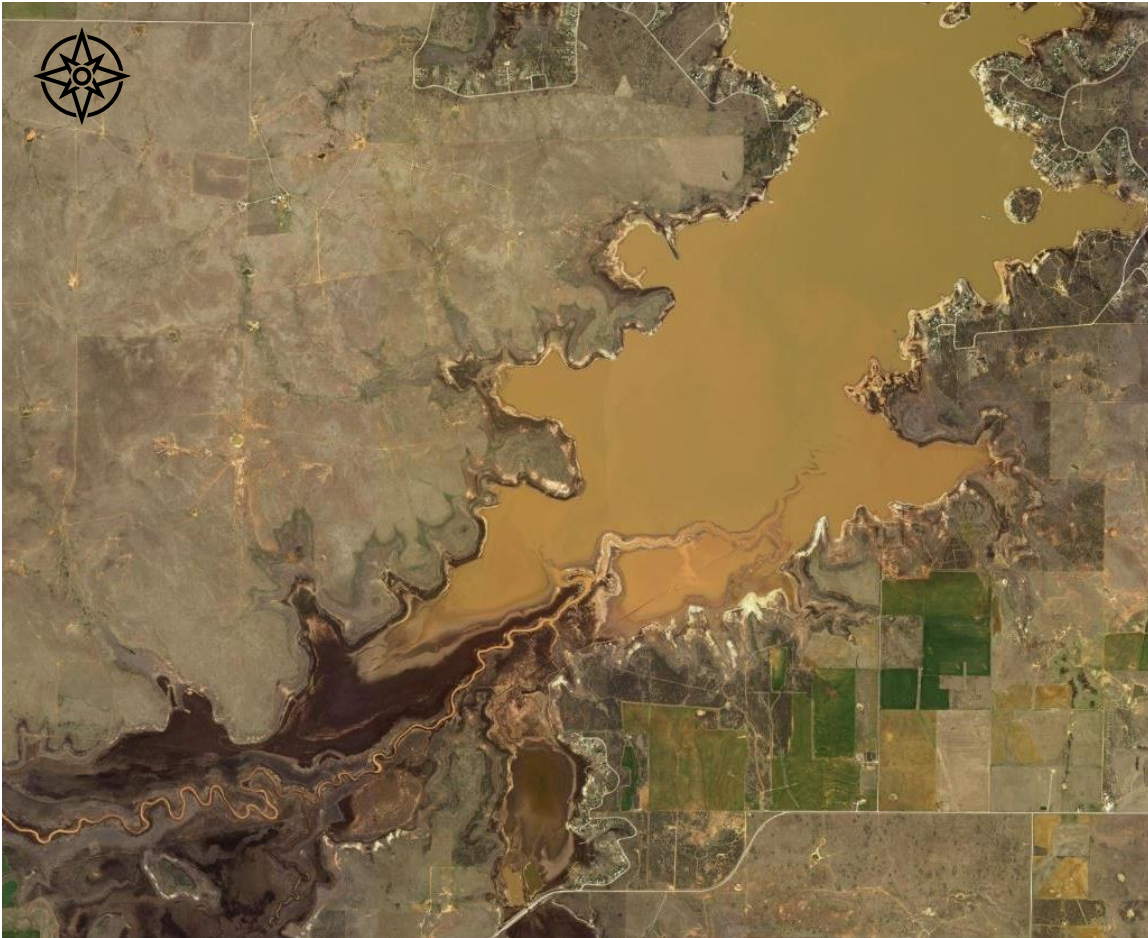
A southeast-trending river with a broad, green floodplain runs through a heavily developed landscape. A large airport is present on the northwest corner of the image, and a large lake on the south-central part of the image.

A muddy, meandering stream enters the landscape on the west side of the image and follows a circuitous route into a dark lake on the southeast side of the image.













WATCHING OVER TEXAS FROM SPACE

An Earth Observations education resource for grades 4 -12 in support of TEKS covering
Earth Science and Environmental Science Standards

Developed by TexasView with support from Grant Number G14AP00002 from the Department of the Interior,

3.1.2.2 WHICH IS WHICH? SCRAMBLE GAME NASA EO

The “Which is Which?” scramble game is a table-top activity that challenges students to match descriptions of features seen on satellite imagery to the satellite images. This game can be played by individuals or in groups. The images and descriptions are scrambled together and placed in the center of the game surface. Students select cards and find the matching descriptions of images. This game is suitable for grade 4 – 12, but probably more suitable for younger students.

The images and description cards on the following pages are designed to be printed one-sided. Laminating the pages before separating the individual images and descriptions is highly recommended. All imagery was captured from the NASA Earth Observatory web site. See the Which Is Which Imagery Key for those links. This document is your key: labels and images match in the same order as seen here.

A coastline where a barrier island and a peninsula enclose a large bay.

A large city and cloud formations over the ocean.

An industrial site on a channel; numerous round petroleum storage tanks mark the site of refinery facilities.

Ships (with wakes) moving in the channel

**A large dust storm
approaches a city.**

**Scattered puffy
cloud formations.**

**An airport appears on the
northwest edge of a city.**

**A lake and a meandering
river.**

**A large hurricane
approaches a
coastline.**

**A city is surrounded on all
sides by an oil field.**

**Center-pivot irrigation
agricultural fields**

**A curved coastline showing
several rivers delivering
sediment
into the ocean during a
flooding event.**

**A large reservoir shows
exposed shorelines related to
severe drought-induced drop
in water levels.**

**A smaller reservoir where
water levels do not appear to
have dropped**

A snow-covered agricultural landscape; snow cover fades towards the southwest.

A major highway cutting across the landscape on the northeast side of the scene.

Agricultural fields are surrounded by the burn scar from a drought-related wildfire.

A meandering river flows through the burned area.

**Two rivers join and flow
into a large channel that
contains two large islands.**

**A large city is divided in half
by a mountain range.**

**Two airports on the east
side; one has black runways,
and one has gray.**

**A river runs between
the northern mountain
range and a second city to
the south.**

